

# U.S. PUBLIC LAND SURVEY MONUMENT RECORD

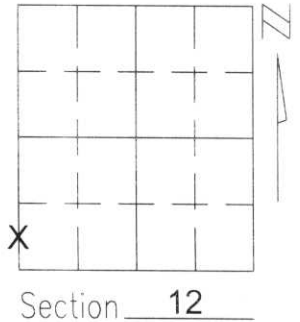
Note: This form is intended and designed to fulfill all requirements of Wisconsin Administrative Code, Chapter A-E 5.02, U.S. Public Land Survey Monument Record (3)(a)(b)(c)(d)(e)(f)(g)(h)(i). An additional sheet may be added if necessary to conform with said requirements.

(a) Corner location: Township 31 North

Range 6 East

Town/City/Village MERRILL

County LINCOLN

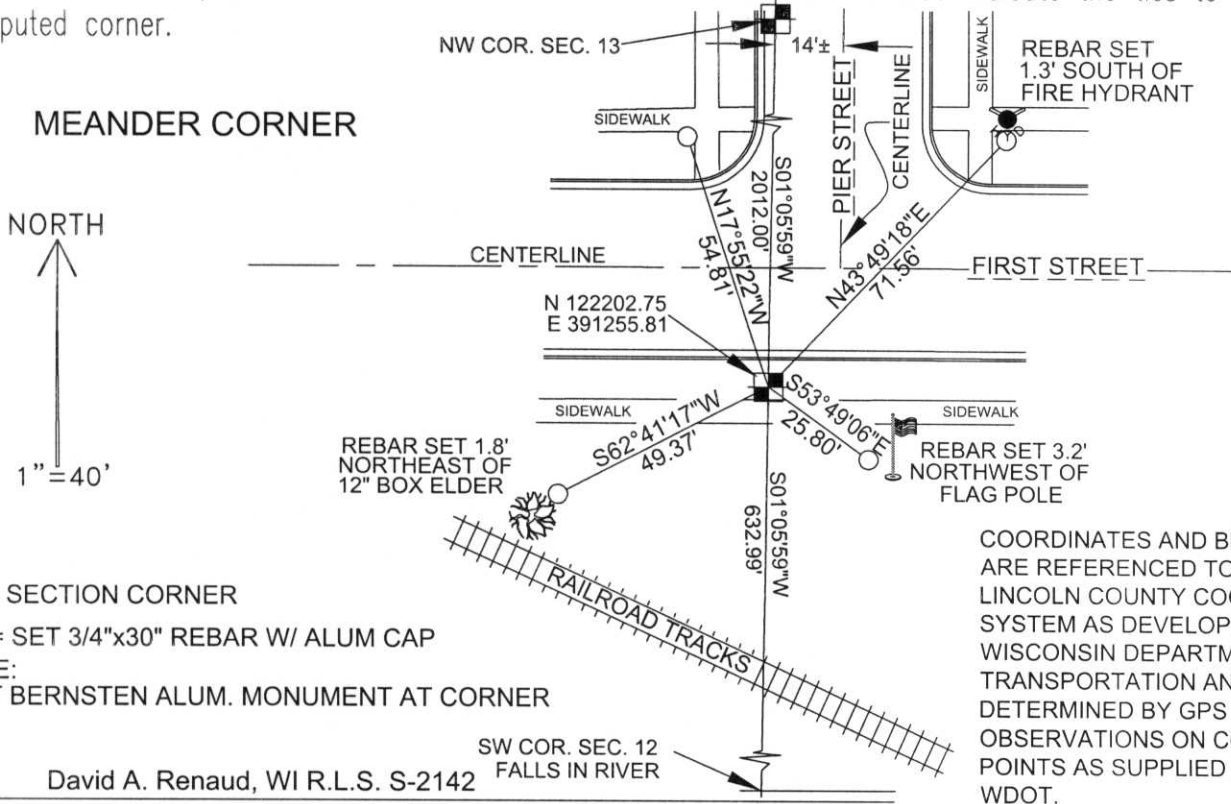


(b)(f)(g)(h) Description of monument found at this corner and if it was accepted, state all evidence (material, testimonial, occupational, plats, records, other monuments) used as a basis for accepting. If not accepted or if nothing was found, state evidence used as basis for establishing location. If reestablished through lost corner proportionate methods, indicate all monuments, distances and directions used to establish.

I SET THIS MEANDER CORNER ON A LINE BETWEEN THE WEST 1/4 CORNER OF SECTION 12 AND THE COMPUTED SOUTHWEST CORNER OF SECTION 12. THE SOUTHWEST CORNER OF SECTION 12 WAS SET EUIDISTANT FROM THE WEST 1/4 CORNER OF SECTION 12 AND THE WEST 1/4 CORNER OF SECTION 13 TO THE SOUTH DUE TO LITTLE OCCUPATIONAL EVIDENCE OR OTHERWISE ALONG THE SOUTH LINE OF THE SOUTHWEST 1/4 OF SECTION 12. I HELD FOUND MONUMENTS FROM RECORDED SURVEYS ALONG THE WEST LINE OF THE NORTHWEST 1/4 OF SECTION 13 TO DETERMINE THE EAST & WEST LOCATION OF THIS CORNER.

RECEIVED AT LINCOLN COUNTY  
COURTHOUSE THIS 23<sup>RD</sup> DAY  
OF July 20 01  
John Walker  
LAND INFORMATION OFFICE

(c)(d)(e) Plan view of corner with ties to at least 4 witness monuments. If in disagreement with previously established corner, show the distances between the two corners and also indicate the ties to the disputed corner.



COORDINATES AND BEARINGS ARE REFERENCED TO THE LINCOLN COUNTY COORDINATE SYSTEM AS DEVELOPED BY THE WISCONSIN DEPARTMENT OF TRANSPORTATION AND WERE DETERMINED BY GPS OBSERVATIONS ON CONTROL POINTS AS SUPPLIED BY THE WDOT.

- - SECTION CORNER
- = SET 3/4"x30" REBAR W/ ALUM CAP
- NOTE: - SET BERNSTEIN ALUM. MONUMENT AT CORNER

(i) I, David A. Renaud, WI R.L.S. S-2142  
(type or print name) certify that the corner location on this record was determined by me or under my direction and control and that this U.S. Public Land Survey Monument Record is correct and complete to the best of my knowledge and belief.

David A. Renaud 6/25/01  
Signature Date



Index No. HI-21