

U.S. PUBLIC LAND SURVEY MONUMENT RECORD

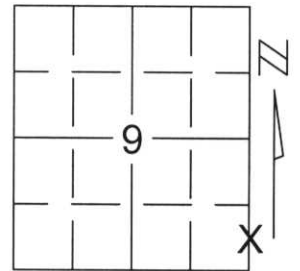
Note: This form is intended and designed to fulfill all requirements of Wisconsin Administrative Code, Chapter A-E 5.02, U.S. Public Land Survey Monument Record (3)(a)(b)(c)(d)(e)(f)(g)(h)(i). An additional sheet may be added if necessary to conform with said requirements.

(a) Corner location: Township 31 North

Range 6 East

Town/City/Village MERRILL

County LINCOLN

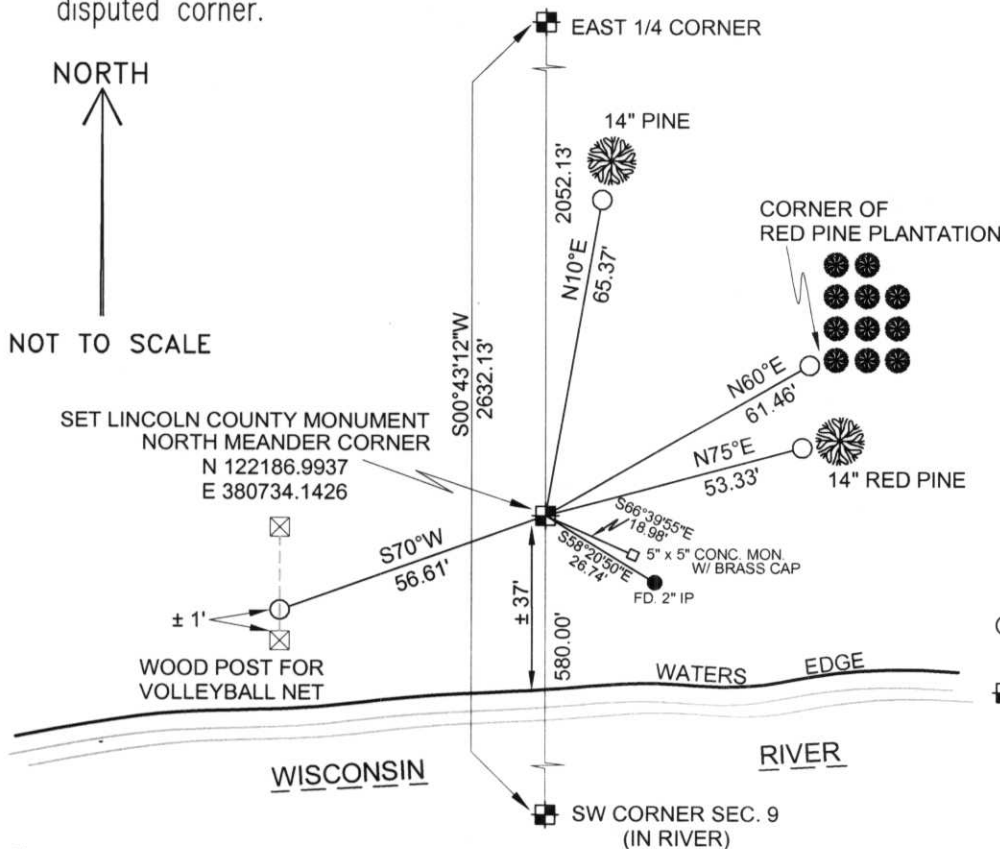


Section 9

(b)(f)(g)(h) Description of monument found at this corner and if it was accepted, state all evidence (material, testimonial, occupational, plats, records, other monuments) used as a basis for accepting. If not accepted or if nothing was found, state evidence used as basis for establishing location. If reestablished through lost corner proportionate methods, indicate all monuments, distances and directions used to establish.

WE SEARCHED THE IMMEDIATE AREA OF THE SUBJECT MEANDER CORNER. WE LOCATED MONUMENTS FROM A 1939 HALL SURVEY AS WELL AS THE 1979 MINK CAPITAL SURVEY AND THE 1999 OSTERBRINK SURVEY. WE ACCEPTED THE POSITION ESTABLISHED BY MINK CAPITAL AND OSTERBRINK AS THE BEST LOCATION FOR THIS SECTION LINE. BE AWARE THAT THE HALL MONUMENT STILL EXISTS ON SITE APPROXIMATELY 20' EAST OF THE ACCEPTED LINE.
SET BERNTSEN MONUMENT AND TIED OUT AS SHOWN BELOW TO PERPETUATE THE CORNER'S LOCATION.

(c)(d)(e) Plan view of corner with ties to at least 4 witness monuments. If in disagreement with previously established corner, show the distances between the two corners and also indicate the ties to the disputed corner.



COORDINATES ARE REFERENCED TO THE LINCOLN COUNTY COORDINATE SYSTEM AS DEVELOPED BY THE WISCONSIN DEPARTMENT OF TRANSPORTATION AND WERE DETERMINED BY GPS OBSERVATIONS ON CONTROL POINTS AS SUPPLIED BY LINCOLN COUNTY.

BEARINGS ARE REFERENCED TO MAGNETIC NORTH.

RECEIVED AT LINCOLN COUNTY COURTHOUSE THIS 3RD DAY OF December 20 02

Zany Walker
LAND INFORMATION OFFICE

○ - SET 3/4" x 30" REBAR W/ ALUM CAP 1' FROM BEARING TREE

⊕ - SECTION CORNER

(i) I, David A. Renaud, RLS certify that the corner location on this record was determined by me or under my direction and control and that this U.S. Public Land Survey Monument Record is correct and complete to the best of my knowledge and belief.

David A. Renaud 12-02-02
Signature Date



Index No. 931620

HI-13



0000-0000-0000

31420

