

# U.S. PUBLIC LAND SURVEY MONUMENT RECORD

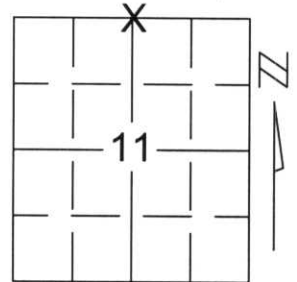
Note: This form is intended and designed to fulfill all requirements of Wisconsin Administrative Code, Chapter A-E 5.02, U.S. Public Land Survey Monument Record (3)(a)(b)(c)(d)(e)(f)(g)(h)(i). An additional sheet may be added if necessary to conform with said requirements.

(a) Corner location: Township 31 North

Range 6 East

Town/City/Village MERRILL

County LINCOLN



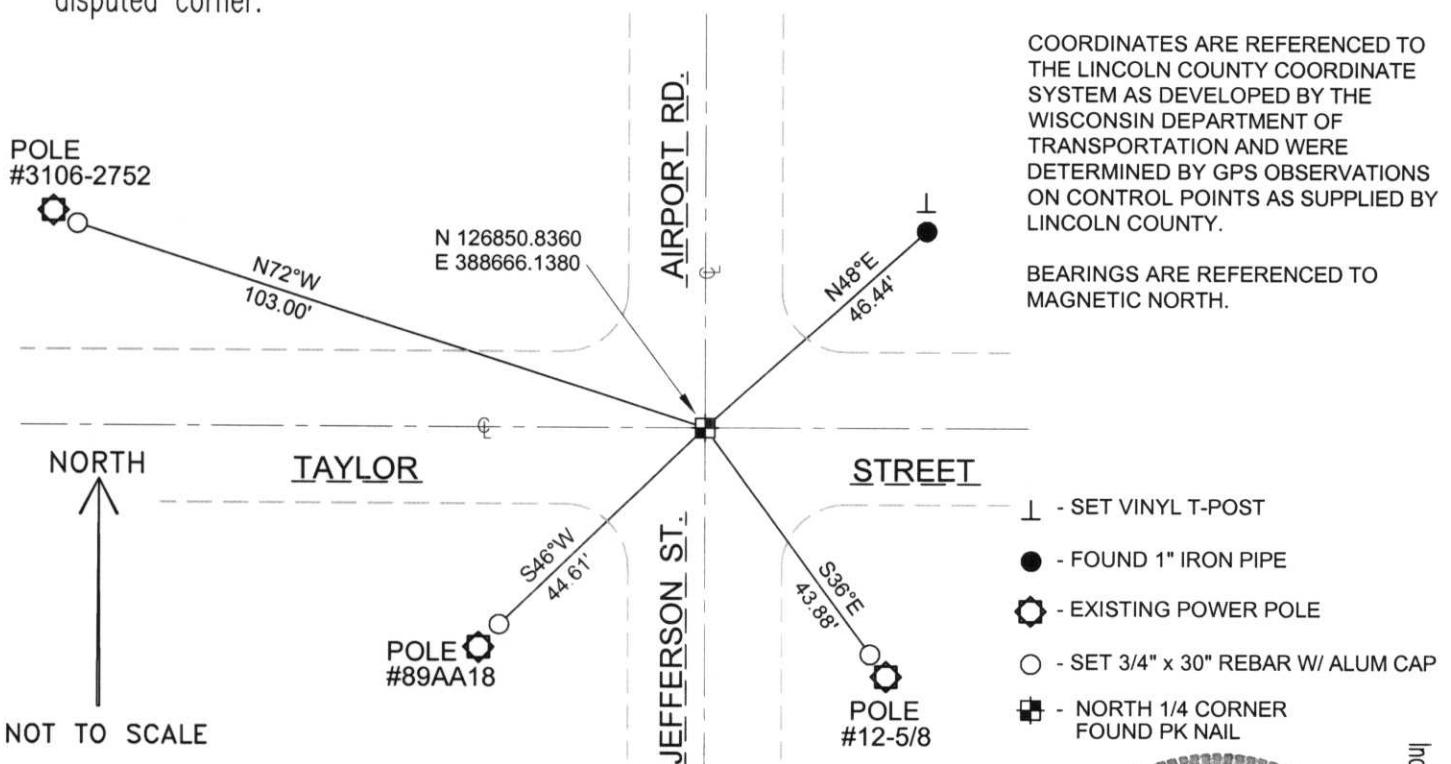
Section 11

(b)(f)(g)(h) Description of monument found at this corner and if it was accepted, state all evidence (material, testimonial, occupational, plats, records, other monuments) used as a basis for accepting. If not accepted or if nothing was found, state evidence used as basis for establishing location. If reestablished through lost corner proportionate methods, indicate all monuments, distances and directions used to establish.

THIS CORNER POSITION WAS ESTABLISHED AND VERIFIED THROUGH THE RESURVEY OF LINCOLN COUNTY CSM #362, THE PLAT OF MERRILL HEIGHTS ADDITION AND A MINK CAPITAL SURVEY DATED MARCH 19, 1974. WE ACCEPTED THIS AS THE BEST EVIDENCE OF THE CORNER LOCATION.  
TIED OUT PK NAIL TO PERPETUATE CORNER LOCATION.

RECEIVED AT LINCOLN COUNTY  
COURTHOUSE THIS 3<sup>RD</sup> DAY  
OF December 20 02  
*Tommy Dablow*  
LAND INFORMATION OFFICE

(c)(d)(e) Plan view of corner with ties to at least 4 witness monuments. If in disagreement with previously established corner, show the distances between the two corners and also indicate the ties to the disputed corner.



NOT TO SCALE


(i) I, David A. Renaud, RLS certify that the corner location on this record was determined by me or under my direction and control and that this U.S. Public Land Survey Monument Record is correct and complete to the best of my knowledge and belief.

*David Renaud* 11-29-02  
Signature Date



Index No. 113162

E-17

A photograph of a road surface with yellow double lines. A white tag with the number 113162 is placed on the road. A red cross-shaped marker is drawn on the road surface, centered between the two yellow lines.

113162