

# LINCOLN COUNTY U.S. PUBLIC LAND TIE SHEET RECORD

SECTION 35  
TOWNSHIP 31N  
RANGE 5 E

353158  
NO.

**CORNING**  
CITY, VILLAGE, TOWN

LANDMARK

CORNER IDENTIFY: SURVEY NAIL

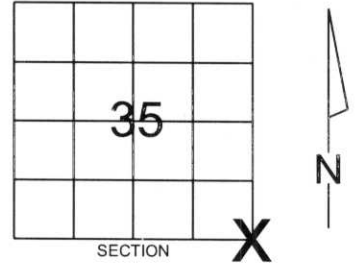
LINCOLN COUNTY COORDINATE: N: 100506.8773

E: 359364.1405

DATE OF SURVEY: June 27, 2006

SURVEY PARTY: Rutzen/Jacobson

FOUND   
SET   
RE-SET   
RE-TIED

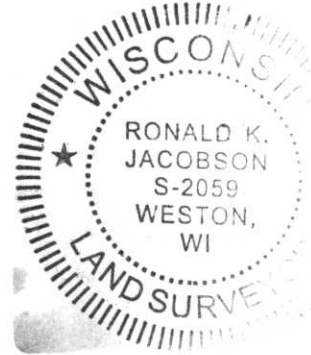


Description of monument found at this corner and if was accepted, state all evidence (material, testimonial, occupational, plats, records, other monuments) used as a basis for accepting. If not accepted or if nothing was found, state evidence used as basis for establishing location. If reestablished through lost corner proportionate methods, indicate all monuments, distances and directions used to establish.

## BASIS FOR MONUMENT LOCATION:

(DESCRIBE METHOD OF SURVEY AND CONER AUTHENTICATION)

Monument was set based on evidence found in the field, and Marathon County tie sheets.



CERTIFIED CORRECT:

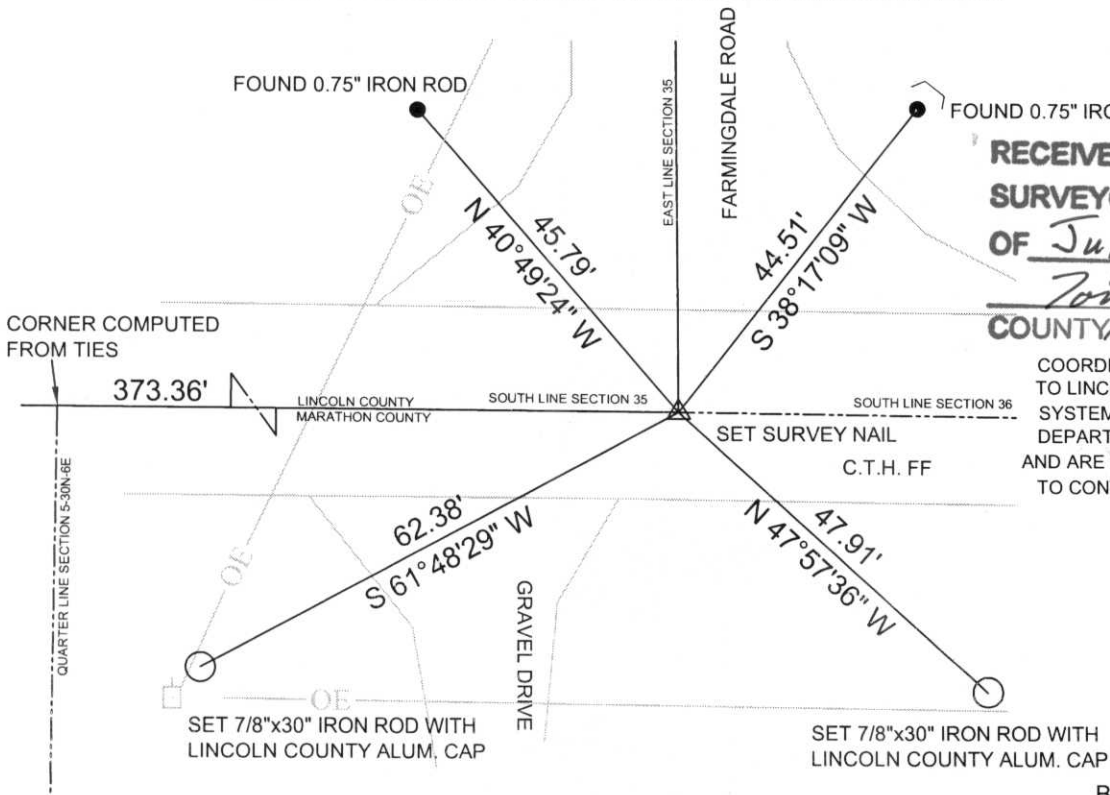
*Ronald Jacobson*  
Ronald Jacobson RLS 2059-008  
Registered Land Surveyor

DATE: July 21, 2006

COMPANY: Central Wisconsin Engineers & Architects  
5707 Schofield Ave.  
Weston, Wisconsin 54476  
(715) 359-3400

## TIE SKETCH:

SHOW MINIMUM OF FOUR (4) HORIZONTAL TIE DISTANCES TO FIXED WITNESS MONUMENTS.  
DESCRIBE ALL MONUMENTS FOUND OR SET. ALL DISTANCES SHOWN IN US SURVEY FEET.



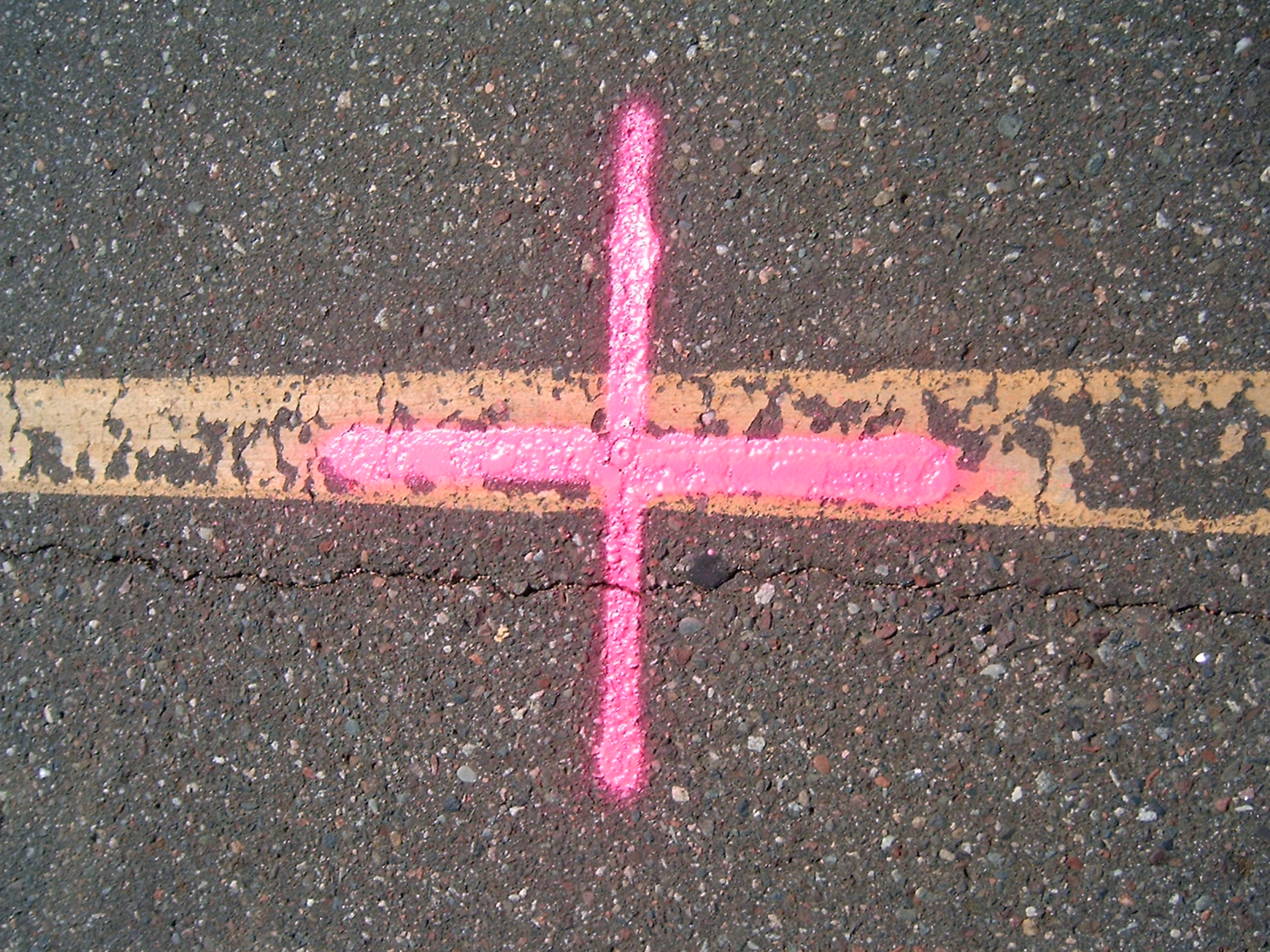
**RECEIVED BY LINCOLN COUNTY  
SURVEYOR THIS 21<sup>ST</sup> DAY  
OF July 20 06  
*Tommy Dall*  
COUNTY SURVEYOR**

COORDINATES ARE REFERENCED TO LINCOLN COUNTY COORDINATE SYSTEM AS DEVELOPED BY THE WI. DEPARTMENT OF TRANSPORTATION AND ARE BASED ON GPS OBSERVATIONS TO CONTROL POINTS AS SUPPLIED BY LINCOLN COUNTY.

NOT TO SCALE  
BEARINGS REFERENCED TO LINCOLN COUNTY COORDINATE SYSTEM

1-21

























ROAD  
CLOSED

CONVERT  
OUT