

# MARATHON COUNTY U.S. PUBLIC LAND SURVEY MONUMENT LOCATION RECORD

SECTION 1  
TOWNSHIP 30  
RANGE 5

NO. 11

LANDMARK       BENCHMARK

FOUND   
SET   
RE-SET   
RE-TIED

**HAMBURG**

\_\_\_\_\_, TOWN

CORNER IDENTITY: **NW. COR. RAILROAD SPIKE**

STATE PLANE COORDINATE: N: \_\_\_\_\_

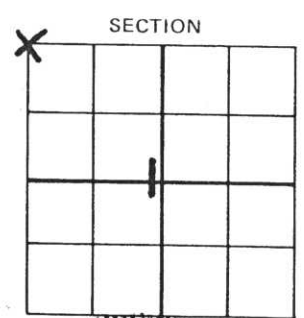
ZONE: \_\_\_\_\_ E: \_\_\_\_\_

ELEVATION - (FEET): \_\_\_\_\_ DATUM: \_\_\_\_\_

THETA ANGLE: \_\_\_\_\_ WEATHER: \_\_\_\_\_

DATE OF SURVEY: 6-26-87 TEMPERATURE: \_\_\_\_\_ °F

SURVEY PARTY: Nowaczyk, Krueger

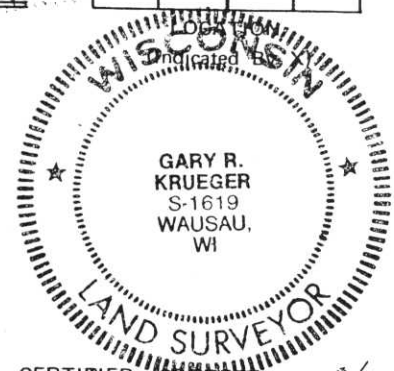


## BASIS FOR MONUMENT LOCATION:

(DESCRIBE METHOD OF SURVEY AND CORNER AUTHENTICATION)

Re-tied corner because of the need to add ties. Had been tied by Nowaczyk in 1984.

SEAL



CERTIFIED CORRECT:

*Gary R. Krueger*  
Gary R. Krueger RLS NO. 1619

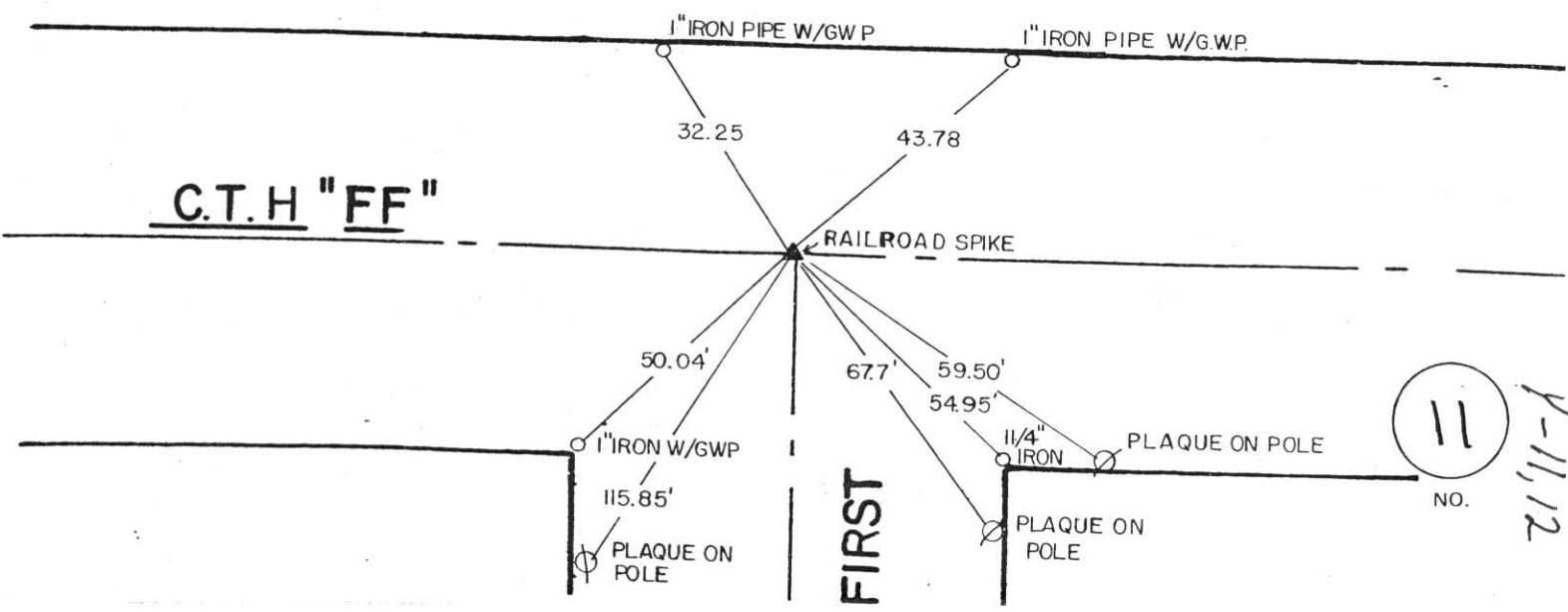
DATE: 8-27-87 Registered Land Surveyor

FIELD BOOK NO. \_\_\_\_\_ PAGE NO. \_\_\_\_\_

COMPANY SURVEYING SPECIALISTS

## TIE SKETCH:

SHOW MINIMUM OF FOUR (4) HORIZONTAL TIE DISTANCES TO FIXED WITNESS MONUMENTS. DESCRIBE ALL MONUMENTS FOUND OR SET. CORRECT ALL DISTANCES SHOWN TO STANDARD TEMPERATURE OF 68° F.



CERTIFIED LAND CORNER RESTORATION

Index No. 4-11, 12

State of Wisconsin }  
County of LINCOLN } ss.

History of original corner establishment:

I FRANCIS X FOX, do hereby certify that on the \_\_\_\_\_ day of \_\_\_\_\_, 1971, I found evidence of the NE corner of SECTION 2 Township 30 North, Range 5 EAST, Fourth, Principal Meridian, as described hereon; and that from this evidence I established a new monument and accessories as described hereon to perpetuate the original location of this corner.

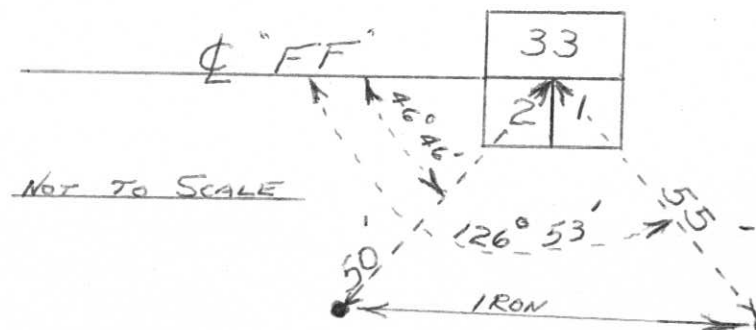
Description of corner evidence found:

Resident witnesses:

\_\_\_\_\_  
\_\_\_\_\_  
\_\_\_\_\_

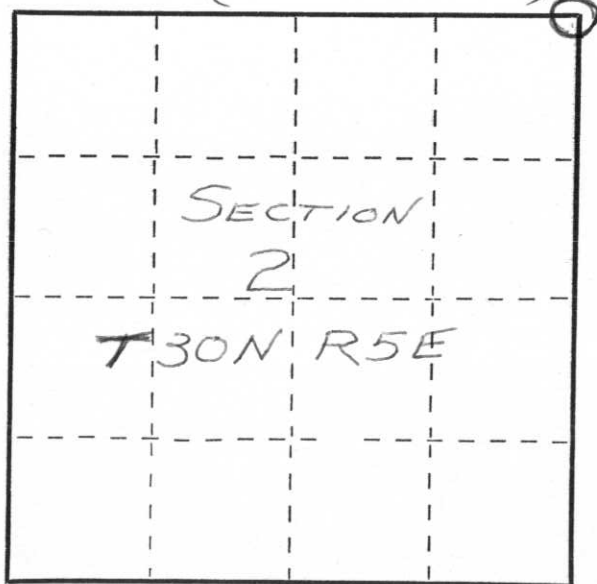
Description of monument and accessories I established to perpetuate the original location of this corner.

SET 2 REFERENCE IRONS AS SHOWN



24.

33  
(Sec ~~33~~ - 31-5)



○ = Corner monument restored.

Dated at MERRILL, Wis., this 6TH day of DECEMBER, 1972.

Signature Francis X. Fox Title HIGHWAY COMMISSIONER Registration No. S 0046  
(County Surveyor, Registered Land Surveyor, or other duly authorized official)

Office of Register of Deeds, County of \_\_\_\_\_, I hereby certify that the within instrument was filed in this office for record on the \_\_\_\_\_ day of \_\_\_\_\_, 19\_\_\_\_ at \_\_\_\_\_ o'clock \_\_\_\_\_ M.

(Register of Deeds)

By \_\_\_\_\_ Deputy