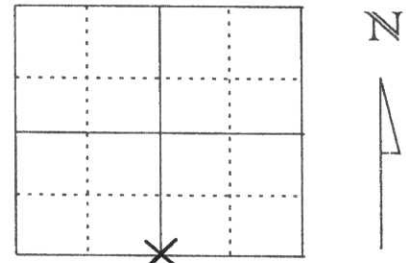


U.S. PUBLIC LAND SURVEY MONUMENT RECORD

Note: This form is intended and designed to fulfill all requirements of Wisconsin Administrative Code, Chapter A-E 5.02, U.S. Public Land Survey Monument Record (3) (a) (b) (c) (d) (e) (f) (g) (h) (l). An additional sheet may be added if necessary to conform with said requirements.

(a) Corner location: Township 31 North
 Range 5 East
 Town/City/Village CORNING
 County Lincoln



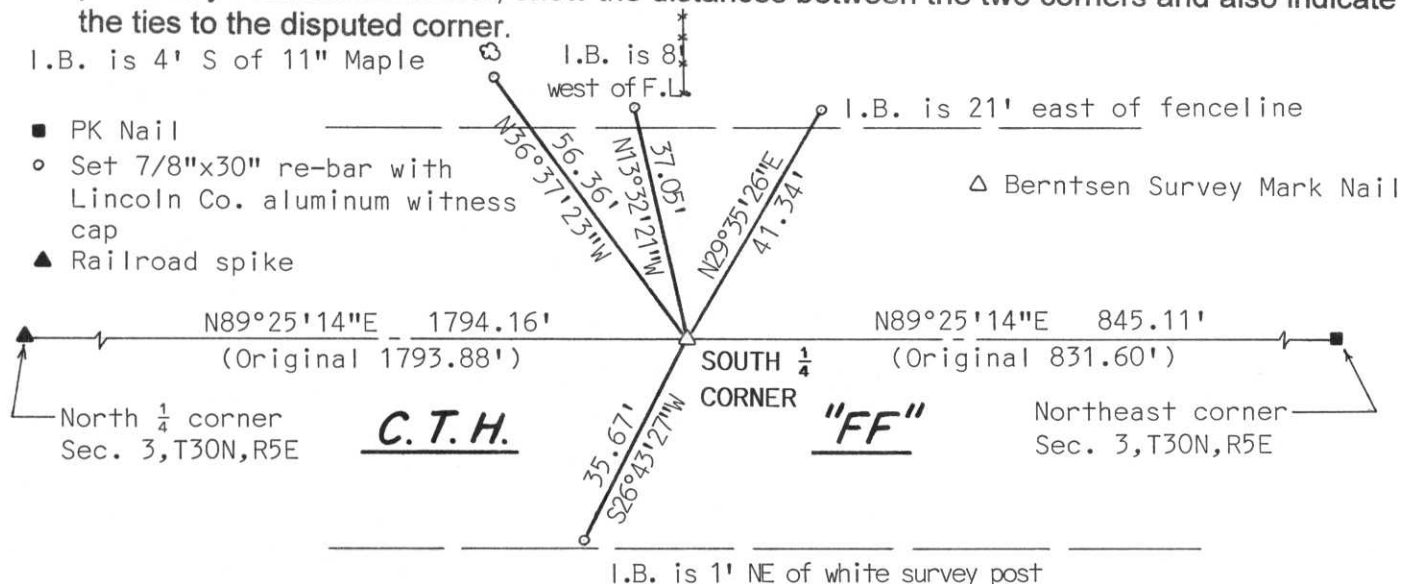
Section 32

(b) (f) (g) (h) Description of monument found at this corner and if it was accepted, state all evidence (material, testimonial, occupational, plats, records, other monuments) used as a basis for accepting. If not accepted or if nothing was found, state evidence used as basis for establishing location. If reestablished through lost corner proportionate methods, indicate all monuments, distances and directions used to establish.

In October of 1979, corner location was dug prior to re-construction of C.T.H. "FF" by Robert Fergot and James Dickinson of the Marathon County Highway Department and no evidence of corner was found. We set the South $\frac{1}{4}$ corner of Section 32 by using the existing fenceline to the north and extending that line south until it intersected with a straight line from the North $\frac{1}{4}$ corner of Section 3 to the Northeast corner of Section 3, T30N, R5E. Accepted this location as the best evidence of the section corner location. Set Berntsen Survey Mark nail for corner

RECEIVED AT LINCOLN COUNTY
 COURTHOUSE THIS 23 DAY
 OF Jan 2001
Tony Dallman
 LAND INFORMATION OFFICE

(c) (d) (e) Plan view of corner with ties to at least 4 witness monuments. If in disagreement with previously established corner, show the distances between the two corners and also indicate the ties to the disputed corner.



(l) I, David J. Goslin RLS No. 2280
 (type or print name) certify that the corner location on this record was determined by me or under my direction and control and that this U.S. Public Land Survey Monument Record is correct and complete to the best of my knowledge and belief.

David J. Goslin
 Signature

1-19-01

Date



Index No.

4-7





