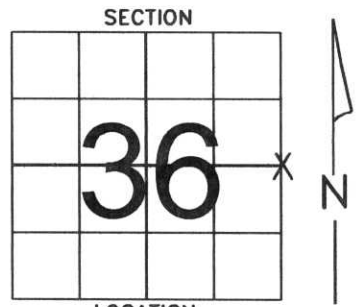


# LINCOLN COUNTY U.S. PUBLIC LAND SURVEY MONUMENT LOCATION RECORD

LANDMARK       BENCHMARK \_\_\_\_\_  
 CORNER IDENTITY: 6 X 6 LIMESTONE  
 STATE PLANE COORDINATE    N: \_\_\_\_\_  
 ZONE: \_\_\_\_\_    E: \_\_\_\_\_  
 ELEVATION-(FEET): \_\_\_\_\_    DATUM: \_\_\_\_\_  
 THETA ANGLE: \_\_\_\_\_    WEATHER: CLOUDY  
 DATE OF SURVEY: 5/13/04    TEMPERATURE: 63° F  
 SURVEY PARTY: KRUEGER, WADZINSKI

SECTION 36  
 TOWNSHIP 31  
 RANGE 5  
CORNING  
 CITY, TOWN, VILLAGE

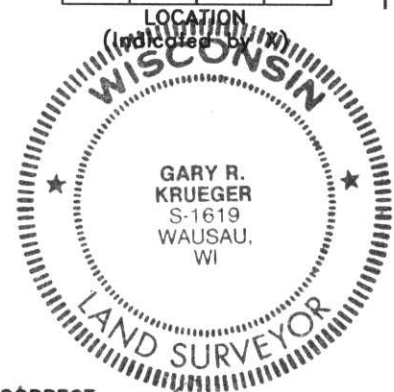
NO.  

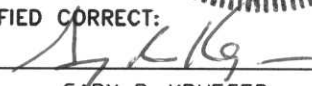


## BASIS FOR MONUMENT LOCATION:

(DESCRIBE METHOD OF SURVEY AND CORNER AUTHENTICATION)

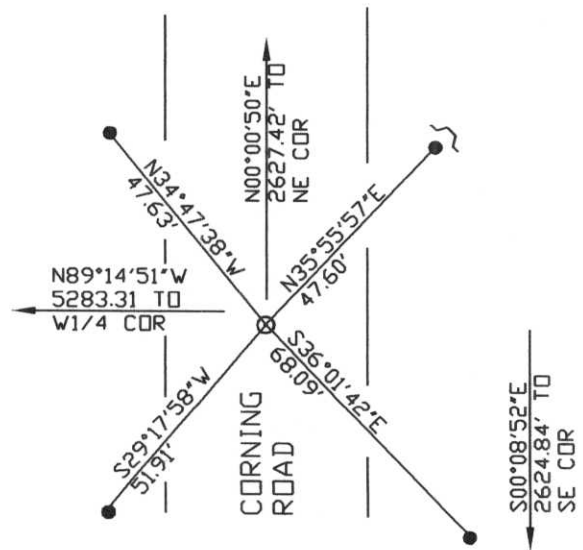
ONLY 1 ORIGINAL TIE REMAINING, DUG FOR CORNER WITH BACKHOE, FOUND IT 0.80 FOOT BELOW SURFACE, SET A RR SPIKE OVER THE TOP OF IT. HAD BEEN TIED BY NOWACZYK IN 1990. ORIGINAL SURVEY BY JAMES MARSH IN 1851.




SEAL  
 CERTIFIED CORRECT:  
  
 GARY R. KRUEGER  
 Registered Land Surveyor  
 DATE: 5/25/04

## TIE SKETCH:

SHOW MINIMUM OF FOUR(4) HORIZONTAL TIE DISTANCES TO FIXED WITNESS MONUMENTS. DESCRIBE ALL MONUMENTS FOUND OR SET. CORRECT ALL DISTANCES SHOWN TO STANDARD TEMPERATURE OF 68\* F.



- SET 7/8" X 30" REBAR W/CAPS
- ⌋ SET WITNESS POST
- ⊙ SET RR SPIKE OVER LIMESTONE

RECEIVED BY LINCOLN COUNTY  
 SURVEYOR THIS 15<sup>TH</sup> DAY  
 OF June 20 04  
  
 COUNTY SURVEYOR

NO.  

W-25

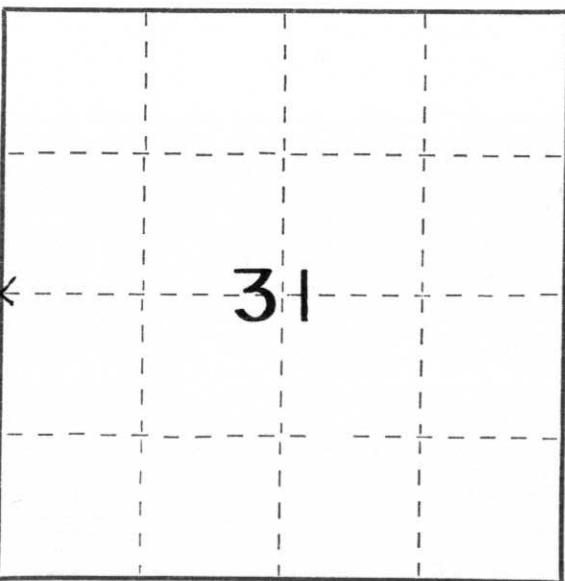
CERTIFIED LAND CORNER RESTORATION

Index No. W-1

State of Wisconsin }  
County of LINCOLN } ss.

I CHESTER J. NOWACZYK, do hereby certify that on the 16TH day of JULY, 1979, I found evidence of the WEST 1/4 corner of SECTION 31 Township 31, North, Range 6 EAST, Fourth, Principal Meridian, as described hereon; and that from this evidence I established a new monument and accessories as described hereon to perpetuate the original location of this corner.

Resident witnesses:



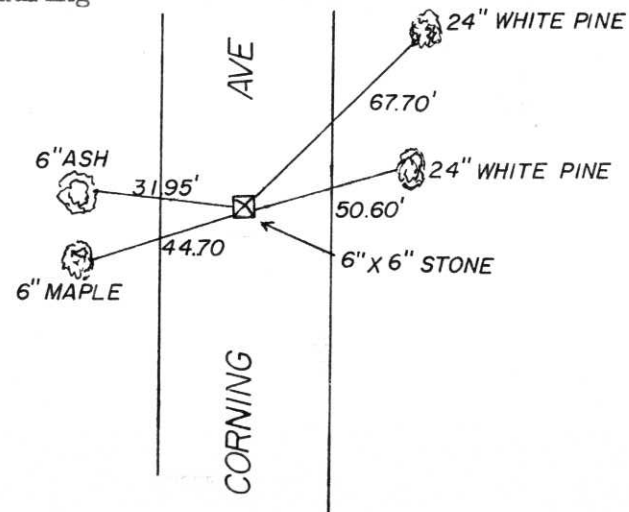
○ = Corner monument restored.

History of original corner establishment:

The Government Surveyors originally set wood posts which were replaced with stone monuments during remonumentation surveys.

Description of corner evidence found:

Chester Nowaczyk excavated with a backhoe and found the 6" X 6" sandstone monument. The stone was in good condition the top of the stone was scraped and the cross was not visible. Tied stone mon. and covered hole. Corner assessories were checked and verified on Feb. 22, 1985



Description of monument and accessories I established to perpetuate the original location of this corner.

Dated at Wausau, Wis., this 25th day of February, 1985

Signature Edwin R. Alendroth Land Surveyor Registration No. S-798  
(County Surveyor, Registered Land Surveyor, or other duly authorized official)

Office of Register of Deeds, County of Lincoln, I hereby certify that the within instrument was filed in this office for record on the \_\_\_\_\_ day of \_\_\_\_\_, 19\_\_\_\_ at \_\_\_\_\_ o'clock \_\_\_\_\_ M.

(Register of Deeds)

By \_\_\_\_\_ Deputy





