

# LINCOLN COUNTY U.S. PUBLIC LAND TIE SHEET RECORD

SECTION 35  
TOWNSHIP 31N  
RANGE 5 E

353154  
NO.

LANDMARK

CORNING  
CITY, VILLAGE, TOWN

CORNER IDENTIVITY: MAG NAIL

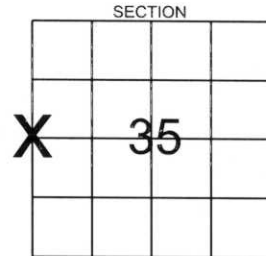
LINCOLN COUNTY COORDINATE: N: 103169.7950

E: 354056.5860

DATE OF SURVEY: June 16, 2006

SURVEY PARTY: Rutzen, Jacobson

FOUND   
SET   
RE-SET   
RE-TIED

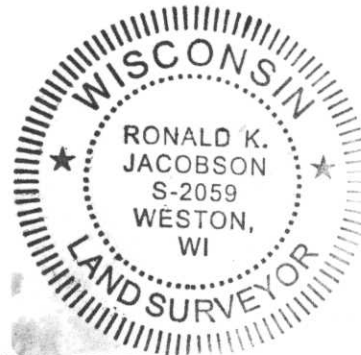


Description of monument found at this corner and if was accepted, state all evidence (material, testimonial, occupational, plats, records, other monuments) used as a basis for accepting. If not accepted or if nothing was found, state evidence used as basis for establishing location. If reestablished through lost corner proportionate methods, indicate all monuments, distances and directions used to establish.

## BASIS FOR MONUMENT LOCATION:

(DESCRIBE METHOD OF SURVEY AND CONER AUTHENTICATION)

Found mag nail at the intersection of S.T.H. 107 and Greendale Drive, right-of-way plat for S.T.H. 107 confirmed nail location.



CERTIFIED CORRECT:

*Ronald K. Jacobson*  
Ronal'd Jacobson RLS 2059-008

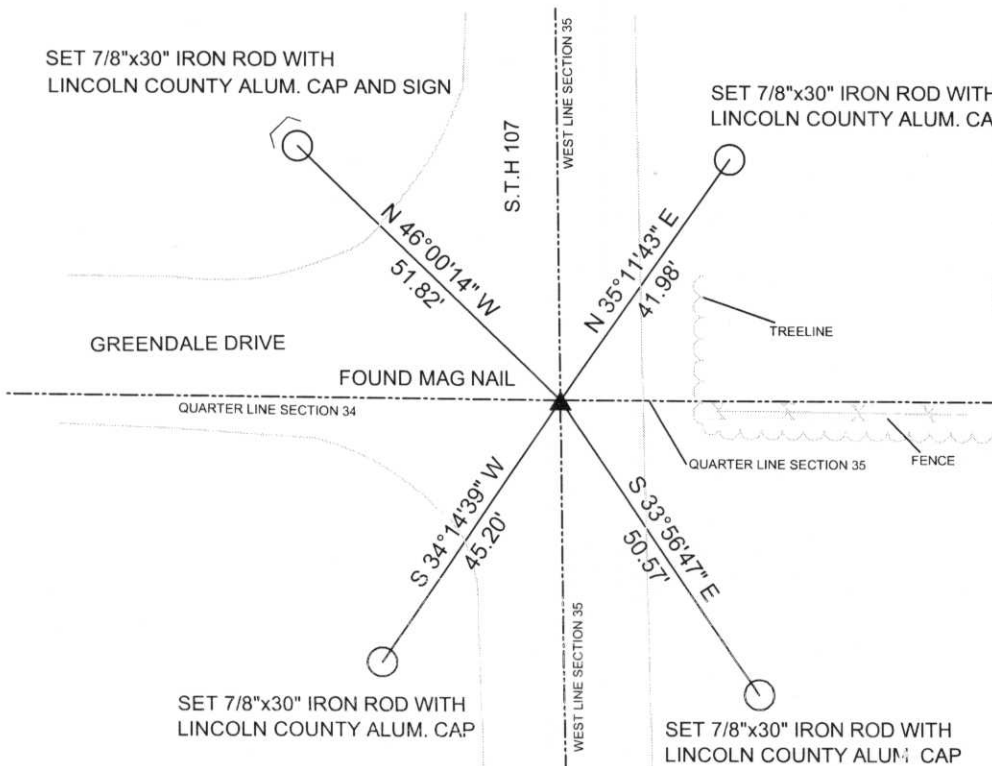
Registered Land Surveyor

DATE: June 16, 2006

COMPANY: Central Wisconsin Engineers & Architects  
5707 Schofield Ave.  
Weston, Wisconsin 54476  
(715) 359-3400

## TIE SKETCH:

SHOW MINIMUM OF FOUR (4) HORIZONTAL TIE DISTANCES TO FIXED WITNESS MONUMENTS.  
DESCRIBE ALL MONUMENTS FOUND OR SET. ALL DISTANCES SHOWN IN US SURVEY FEET.



RECEIVED BY LINCOLN COUNTY  
SURVEYOR THIS 19<sup>TH</sup> DAY  
OF June 20 06  
*Tony Duth*  
COUNTY SURVEYOR

COORDINATES ARE REFERENCED TO LINCOLN COUNTY COORDINATE SYSTEM AS DEVELOPED BY THE WI. DEPARTMENT OF TRANSPORTATION AND ARE BASED ON GPS OBSERVATIONS TO CONTROL POINTS AS SUPPLIED BY LINCOLN COUNTY.



NOT TO SCALE  
BEARINGS REFERENCED TO LINCOLN COUNTY COORDINATE SYSTEM

LI-M









