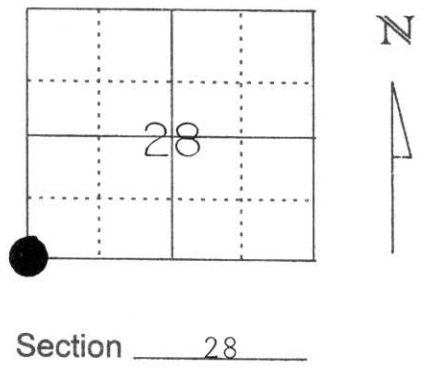


U.S. PUBLIC LAND SURVEY MONUMENT RECORD

Note: This form is intended and designed to fulfill all requirements of Wisconsin Administrative Code, Chapter A-E 5.02, U.S. Public Land Survey Monument Record (3) (a) (b) (c) (d) (e) (f) (g) (h) (l). An additional sheet may be added if necessary to conform with said requirements.

(a) Corner location: Township 31 North
 Range 5 East
 Town/City/Village Corning
 County Lincoln



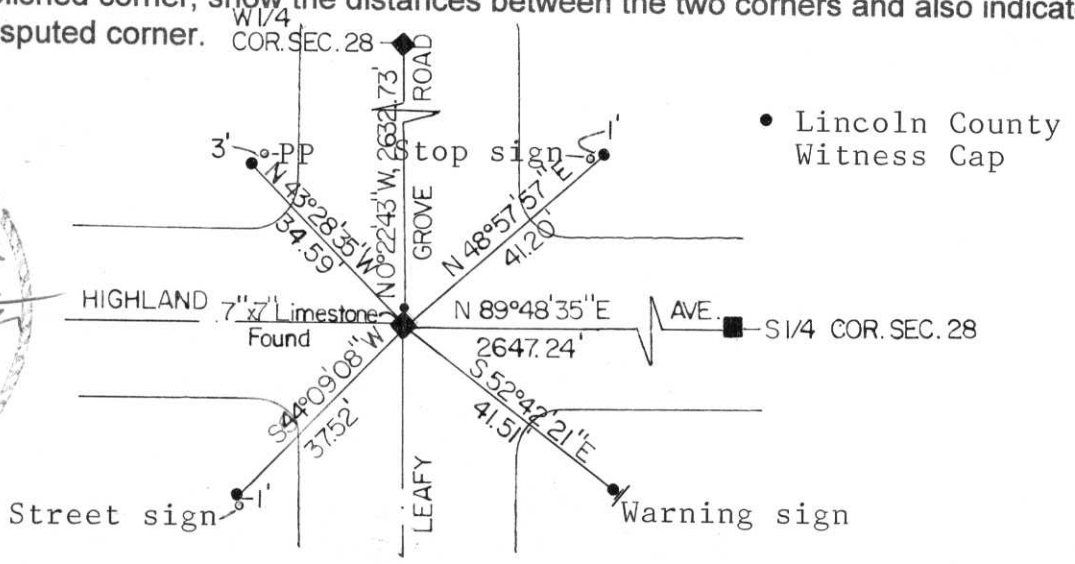
Section 28

(b) (f) (g) (h) Description of monument found at this corner and if it was accepted, state all evidence (material, testimonial, occupational, plats, records, other monuments) used as a basis for accepting. If not accepted or if nothing was found, state evidence used as basis for establishing location. If reestablished through lost corner proportionate methods, indicate all monuments, distances and directions used to establish.

Excavated the intersection of Leafy Grove Road and Highland Avenue and found a 7"x7" Limestone with one notch on the South corner and three notches on the East corner. Stone was marked on the top with a "S". It was then tied out with Lincoln County capped 7/8" iron rebar, flush with the ground, and a 7/8" rebar was place to the North side of monument. A warning sign was placed at the Southeast Witness Corner. The monument was then tied to adjacent 1/4 Corners to the North and South.

**RECEIVED AT LINCOLN COUNTY
 COURTHOUSE THIS 27th DAY
 OF Aug 1997
Pat Diebe
 TAX DESCRIPTION OFFICE**

(c) (d) (e) Plan view of corner with ties to at least 4 witness monuments. If in disagreement with previously established corner, show the distances between the two corners and also indicate the ties to the disputed corner.



(l) I, William W. Nutter, S-2299
 (type or print name) certify that the corner location on this record was determined by me or under my direction and control and that this U.S. Public Land Survey Monument Record is correct and complete to the best of my knowledge and belief.

William W. Nutter Signature August 26, 1997 Date

Index No. 4-9