

CERTIFIED LAND CORNER RESTORATION

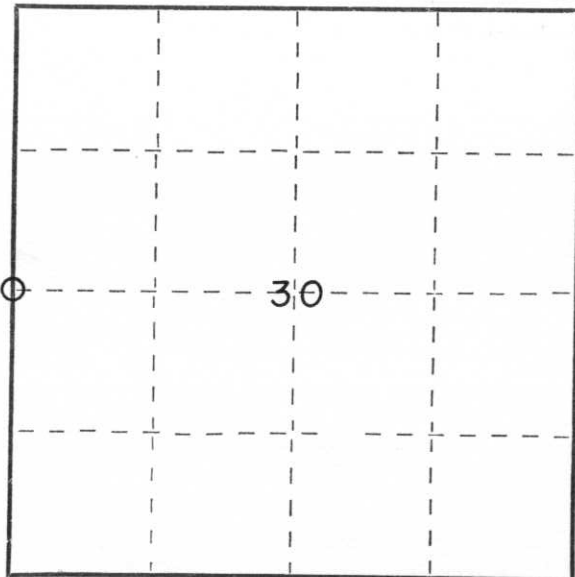
Index No. S-1

State of Wisconsin }
County of Lincoln } ss.

I, LaVerne H. Mosher, do hereby certify that on the 27th day of May, 1983, I found evidence of the West 1/4 corner of Section 30 Township 31, North, Range 6 East, Fourth, Principal Meridian, as described hereon; and that from this evidence I established a new monument and accessories as described hereon to perpetuate the original location of this corner.

Resident witnesses:

Arnold Wyland, Jr.



○ = Corner monument restored.

History of original corner establishment:

Notes of the original government survey indicate wood posts were set at all section and quarter-section corners. Stone monuments subsequently were placed at these corners during remonumentation surveys.

Description of corner evidence found:

Excavated with backhoe. At depth of 12 inches below gravel roadway surface, a 6"x6"x16" Limestone monument was found in upright fashion. Top of monument had been broken off by grader and was not recovered. Bottom segment was in good shape hence left in place and a new "X" chiseled in center top of stone. A 1"x30" iron pipe was set alongside West face of stone to aid future location. Monument is situated about 3' East of road centerline.

Description of monument and accessories I established to perpetuate the original location of this corner.

See sketch on reverse.



Dated at Schofield, Wis., this 2nd day of June, 1983.

Signature LaVerne H. Mosher Title Registered Land Surveyor Registration No S-1188
(County Surveyor, Registered Land Surveyor, or other duly authorized official)

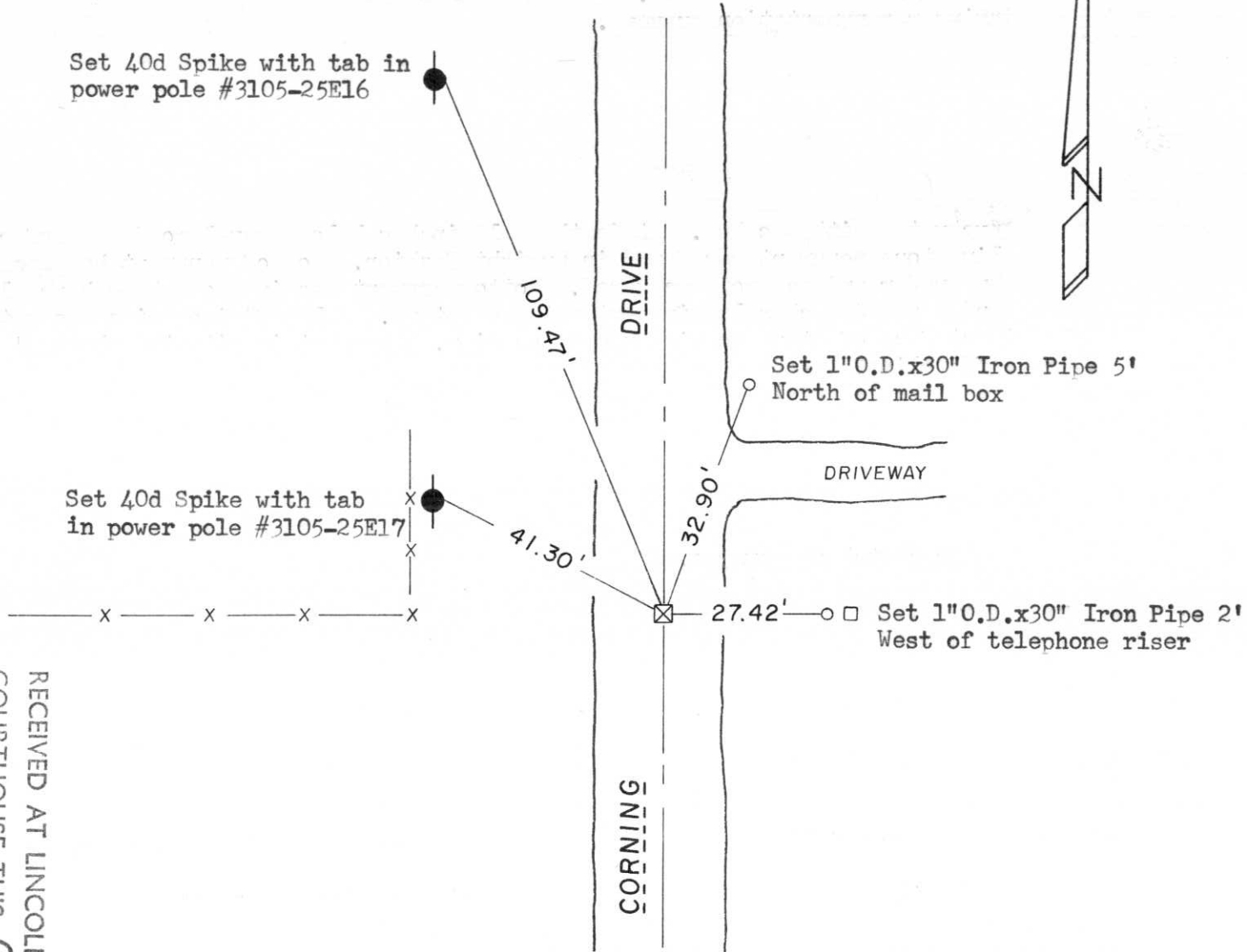
Office of Register of Deeds, County of _____, I hereby certify that the within instrument was filed in this office for record on the _____ day of _____, 19____ at _____ o'clock _____ M.

(Register of Deeds)

By _____ Deputy

Set 40d Spike with tab in
power pole #3105-25E16

Set 40d Spike with tab
in power pole #3105-25E17



RECEIVED AT LINCOLN COUNTY
COURTHOUSE THIS 6 DAY
OF June 1983.
Pat Rivela
TAX DESCRIPTION OFFICE