

LINCOLN COUNTY U.S. PUBLIC LAND TIE SHEET RECORD

SECTION 25
TOWNSHIP 31N
RANGE 5 E

253154
NO.

CORNING
CITY, VILLAGE, TOWN

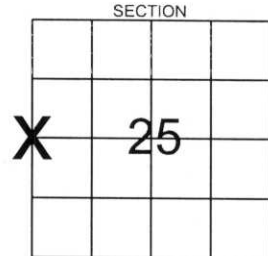
LANDMARK

CORNER INDENTITY: 6"X4" LIMESTONE MONUMENT

LINCOLN COUNTY COORDINATE: N: 108428.8690
E: 359325.3320

DATE OF SURVEY: May 25, 2006
SURVEY PARTY: Rutzen/Dahlvig/Jacobson

FOUND
SET
RE-SET
RE-TIED



Description of monument found at this corner and if was accepted, state all evidence (material, testimonial, occupational, plats, records, other monuments) used as a basis for accepting. If not accepted or if nothing was found, state evidence used as basis for establishing location. If reestablished through lost corner proportionate methods, indicate all monuments, distances and directions used to establish.

BASIS FOR MONUMENT LOCATION:

(DESCRIBE METHOD OF SURVEY AND CONER AUTHENTICATION)

Found 6"x4" limestone monument approx. 3 feet below gravel surface while digging with backhoe. Monument was leaning to the south, stood it upright and set a 1"x18" I.P. above monument, 1 foot below surface.



CERTIFIED CORRECT

Ronald Jacobson

Ronald Jacobson RLS 2059-008

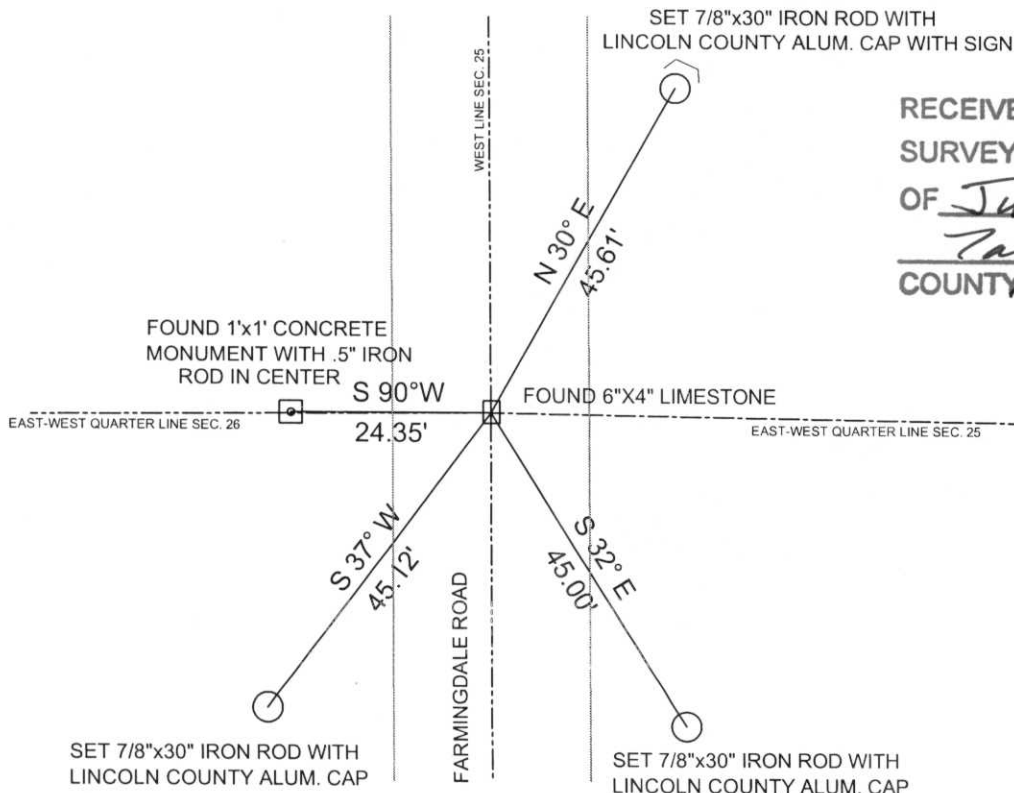
Registered Land Surveyor

DATE: June 7, 2006

COMPANY Central Wisconsin Engineers & Architects

TIE SKETCH:

SHOW MINIMUM OF FOUR (4) HORIZONTAL TIE DISTANCES TO FIXED WITNESS MONUMENTS.
DESCRIBE ALL MONUMENTS FOUND OR SET. ALL DISTANCES SHOWN IN US SURVEY FEET.



RECEIVED BY LINCOLN COUNTY
SURVEYOR THIS 12TH DAY
OF June 20 06
Tony Dahl
COUNTY SURVEYOR

COORDINATES ARE REFERENCED TO LINCOLN COUNTY COORDINATE SYSTEM AS DEVELOPED BY THE WI. DEPARTMENT OF TRANSPORTATION AND ARE BASED ON GPS OBSERVATIONS TO CONTROL POINTS AS SUPPLIED BY LINCOLN COUNTY.

NOT TO SCALE
BEARINGS REFERENCED TO MAGNETIC NORTH

5-21









