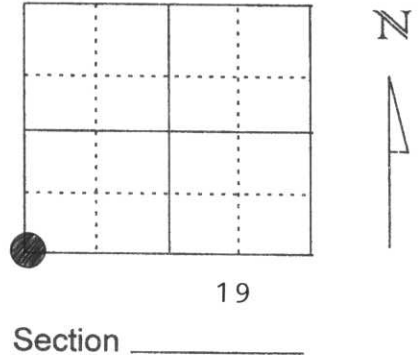


U.S. PUBLIC LAND SURVEY MONUMENT RECORD

Note: This form is intended and designed to fulfill all requirements of Wisconsin Administrative Code, Chapter A-E 5.02, U.S. Public Land Survey Monument Record (3) (a) (b) (c) (d) (e) (f) (g) (h) (i). An additional sheet may be added if necessary to conform with said requirements.

(a) Corner location: Township 31 North
 Range 6 East
 Town/City/Village TN. SCOTT
 County Lincoln



(b) (f) (g) (h) Description of monument found at this corner and if it was accepted, state all evidence (material, testimonial, occupational, plats, records, other monuments) used as a basis for accepting. If not accepted or if nothing was found, state evidence used as basis for establishing location. If reestablished through lost corner proportionate methods, indicate all monuments, distances and directions used to establish.

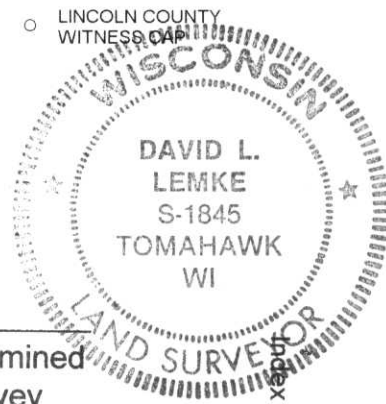
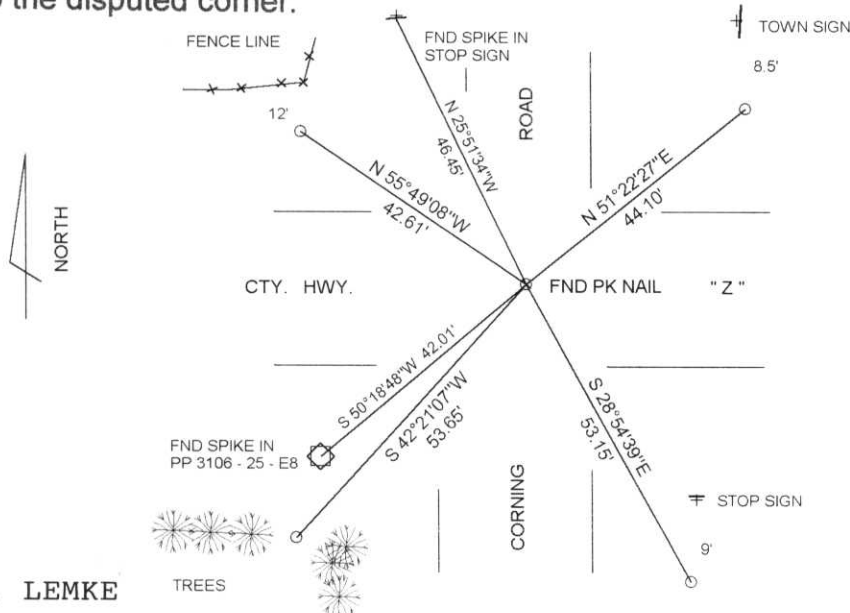
AUGUST 1982

SHERIDAN SCHWARK DUG THE INTERSECTION AND FOUND A 1 1/4" IRON ROD 2' BELOW THE PAVEMENT. HE RESET THE CORNER POSITION WITH A BERNTSEN MONUMENT. AND ESTABLISHED 3 TIES TO THE CORNER.

MARCH 1998 I FOUND A PK NAIL 2.25' SOUTH OF THE C/L HWY. " Z " AND ON C/L CORNING RD RUNNING N/S. ALSO FOUND THE TIE TO THE NW AND SW SET BY SHERIDAN IN 1982. I SET LINCOLN COUNTY WITNESS CAPS AS SHOWN TIED TO THE PK NAIL AND EXISTING TIES SET BY SHERIDAN.

(c) (d) (e) Plan view of corner with ties to at least 4 witness monuments. If in disagreement with previously established corner, show the distances between the two corners and also indicate the ties to the disputed corner.

RECEIVED AT LINCOLN COUNTY
 COURTHOUSE THIS 26 DAY
 OF April 19 98
 Gert Priebe
 TAX DESCRIPTION OFFICE



(i) I, DAVID L. LEMKE
 (type or print name) certify that the corner location on this record was determined by me or under my direction and control and that this U.S. Public Land Survey Monument Record is correct and complete to the best of my knowledge and belief.

MAR. 30 1998

Signature [Handwritten Signature]

Date

Index No. Q-1

CERTIFIED LAND CORNER RESTORATION

Index No. Q-1

State of Wisconsin }
County of Lincoln } ss.

History of original corner establishment:
Wood post set by original government surveyor.

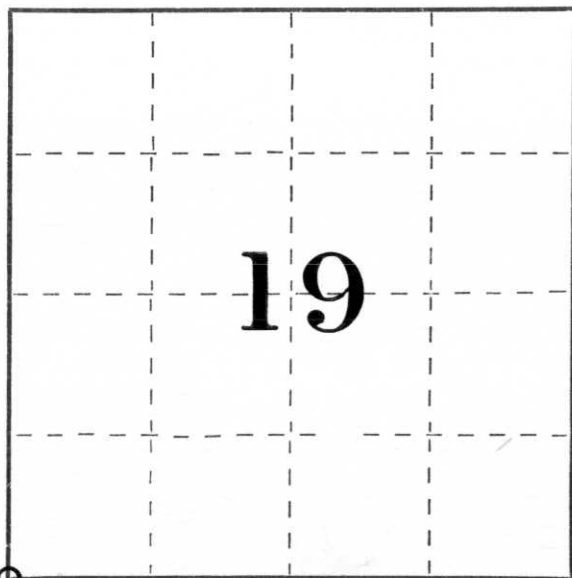
I Sheridan D. Schwark, do hereby certify that on the 12th day of August, 19 82, I found evidence of the Southwest corner of Section 19 Township 31, North, Range 6 East, Fourth, Principal Meridian, as described hereon; and that from this evidence I established a new monument and accessories as described hereon to perpetuate the original location of this corner.

Resident witnesses:

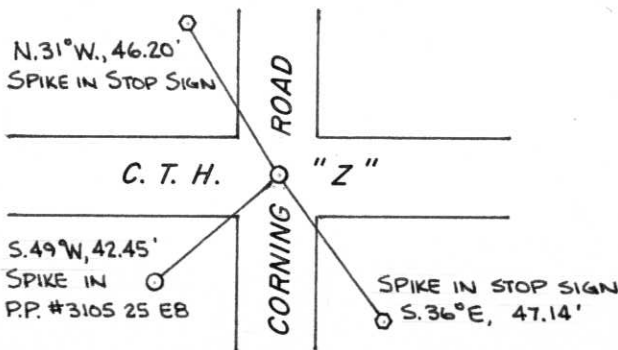
Description of corner evidence found:

We excavated the blacktop intersection at the centerline intersection, Brad Mattson backhoe operator, and found a 1 1/4" x 33" solid round iron rod approximately 2 feet below the surface. Since there is a map on file showing that this corner should have a granite monument we continued digging deeper and in a larger area. After finding no other evidence I assumed that the granite was obviously replaced by the iron rod when C.T.H. Z had been reworked. The iron was at the level of the natural grade with all road fill being above it. We replaced the rod with a Lincoln County Berntsen monument and established the references shown below.

Description of monument and accessories I established to perpetuate the original location of this corner.



○ = Corner monument restored.



Dated at Merrill, Wis., this 23rd day of August, 19 82.

Signature Sheridan D. Schwark Title Registered Land Surveyor Registration No. S-1205
(County Surveyor, Registered Land Surveyor, or other duly authorized official)

Office of Register of Deeds, County of _____, I hereby certify that the within instrument was filed in this office for record on the _____ day of _____, 19 _____ at _____ o'clock _____ M.

(Register of Deeds)

By _____ Deputy