

LINCOLN COUNTY U.S. PUBLIC LAND TIE SHEET RECORD

SECTION 24
TOWNSHIP 31N
RANGE 5 E

243156
NO.

CORNING
CITY, VILLAGE, TOWN

LANDMARK

CORNER INDENTITY: SURVEY NAIL

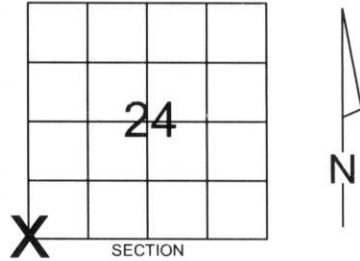
LINCOLN COUNTY COORDINATE: N: 111099.1858

E: 359272.8281

DATE OF SURVEY: July 19, 2006

SURVEY PARTY: Rutzen/Jacobson

- FOUND
- SET
- RE-SET
- RE-TIED



Description of monument found at this corner and if was accepted, state all evidence (material, testimonial, occupational, plats, records, other monuments) used as a basis for accepting. If not accepted or if nothing was found, state evidence used as basis for establishing location. If reestablished through lost corner proportionate methods, indicate all monuments, distances and directions used to establish.

BASIS FOR MONUMENT LOCATION:

(DESCRIBE METHOD OF SURVEY AND CONER AUTHENTICATION)

Monument was set based on Right-Of-Way for C.T.H. Z and evidence of occupation found in the field.



CERTIFIED CORRECT:

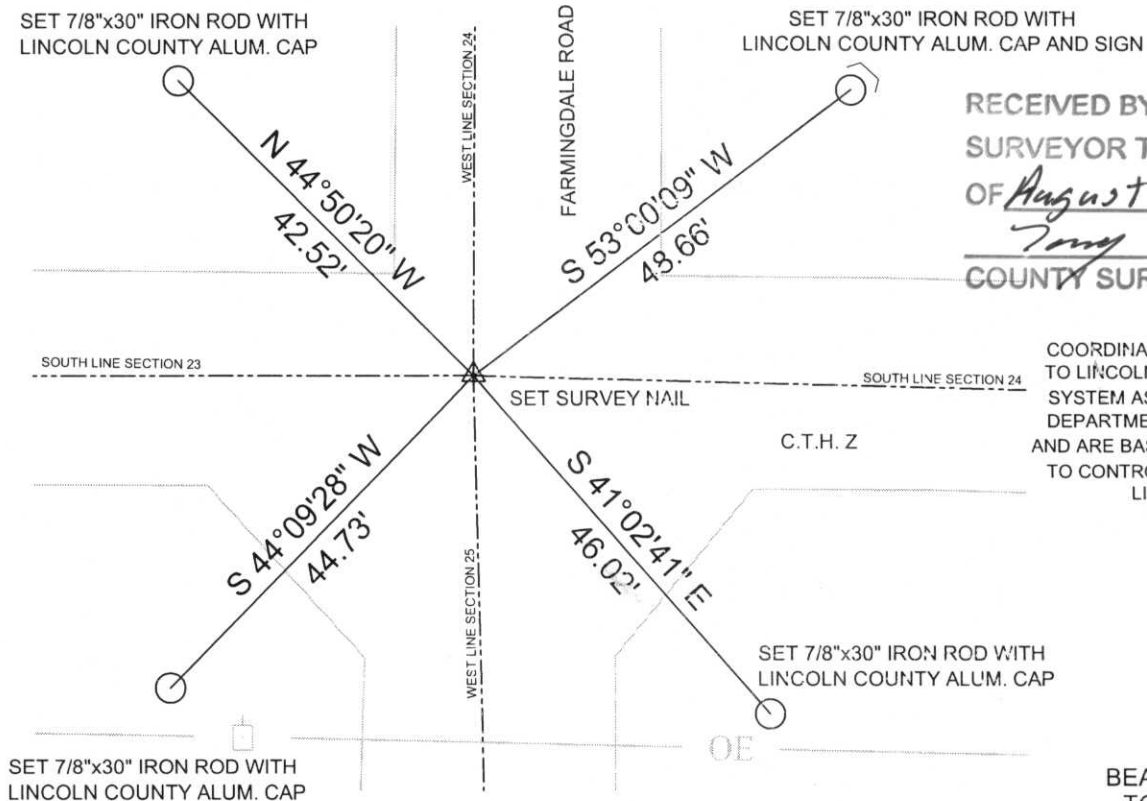
Ronald Jacobson
Ronald Jacobson RLS 2059-008
Registered Land Surveyor

DATE: July 21, 2006

COMPANY: Central Wisconsin Engineers & Architects
5707 Schofield Ave.
Weston, Wisconsin 54476
(715) 359-3400

TIE SKETCH:

SHOW MINIMUM OF FOUR (4) HORIZONTAL TIE DISTANCES TO FIXED WITNESS MONUMENTS.
DESCRIBE ALL MONUMENTS FOUND OR SET. ALL DISTANCES SHOWN IN US SURVEY FEET.



RECEIVED BY LINCOLN COUNTY
SURVEYOR THIS 7TH DAY
OF August 20 06
Tony Dahl
COUNTY SURVEYOR

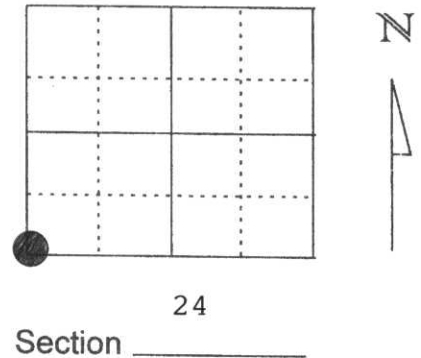
COORDINATES ARE REFERENCED TO LINCOLN COUNTY COORDINATE SYSTEM AS DEVELOPED BY THE WI. DEPARTMENT OF TRANSPORTATION AND ARE BASED ON GPS OBSERVATIONS TO CONTROL POINTS AS SUPPLIED BY LINCOLN COUNTY.

NOT TO SCALE
BEARINGS REFERENCED TO LINCOLN COUNTY COORDINATE SYSTEM

U.S. PUBLIC LAND SURVEY MONUMENT RECORD

Note: This form is intended and designed to fulfill all requirements of Wisconsin Administrative Code, Chapter A-E 5.02, U.S. Public Land Survey Monument Record (3) (a) (b) (c) (d) (e) (f) (g) (h) (l). An additional sheet may be added if necessary to conform with said requirements.

(a) Corner location: Township 31 North
 Range 5 East
 Town/City/Village TN. OF CORNING
 County Lincoln



(b) (f) (g) (h) Description of monument found at this corner and if it was accepted, state all evidence (material, testimonial, occupational, plats, records, other monuments) used as a basis for accepting. If not accepted or if nothing was found, state evidence used as basis for establishing location. If reestablished through lost corner proportionate methods, indicate all monuments, distances and directions used to establish.

EXCAVATED INTERSECTION OF HWY. " Z " & FARMING DALE RD. MADE A VERY LARGE HOLE AND FOUND NO EVIDENCE OF THE CORNER POSITION ABOVE AND OR BELOW GROUND.

(c) (d) (e) Plan view of corner with ties to at least 4 witness monuments. If in disagreement with previously established corner, show the distances between the two corners and also indicate the ties to the disputed corner.

RECEIVED AT LINCOLN COUNTY
 COURTHOUSE THIS 7th DAY
 OF April 19 98
 OF Govt. Printer
 TAX DESCRIPTION OFFICE



DAVID L. LEMKE S-1845

(l) I, _____
 (type or print name) certify that the corner location on this record was determined by me or under my direction and control and that this U.S. Public Land Survey Monument Record is correct and complete to the best of my knowledge and belief.

MAR. 30 1998

Signature

Date









