

LINCOLN COUNTY U.S. PUBLIC LAND TIE SHEET RECORD

SECTION 20
TOWNSHIP 31N
RANGE 5 E

203156
NO.

LANDMARK

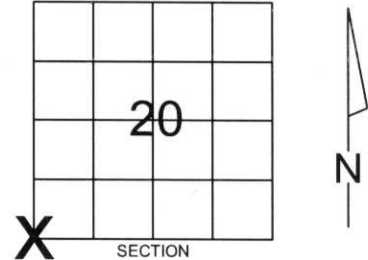
CORNING
CITY, VILLAGE, TOWN

CORNER IDENTIFY: SURVEY NAIL

LINCOLN COUNTY COORDINATE: N: 111105.4670
E: 338187.0310

DATE OF SURVEY: July 19, 2006
SURVEY PARTY: Rutzen/Jacobson

FOUND
SET
RE-SET
RE-TIED



Description of monument found at this corner and if was accepted, state all evidence (material, testimonial, occupational, plats, records, other monuments) used as a basis for accepting. If not accepted or if nothing was found, state evidence used as basis for establishing location. If reestablished through lost corner proportionate methods, indicate all monuments, distances and directions used to establish.

BASIS FOR MONUMENT LOCATION:

(DESCRIBE METHOD OF SURVEY AND CONER AUTHENTICATION)

Monument was accepted based on Right-Of-Way plat for S.T.H. 64, and improvements found in the field.



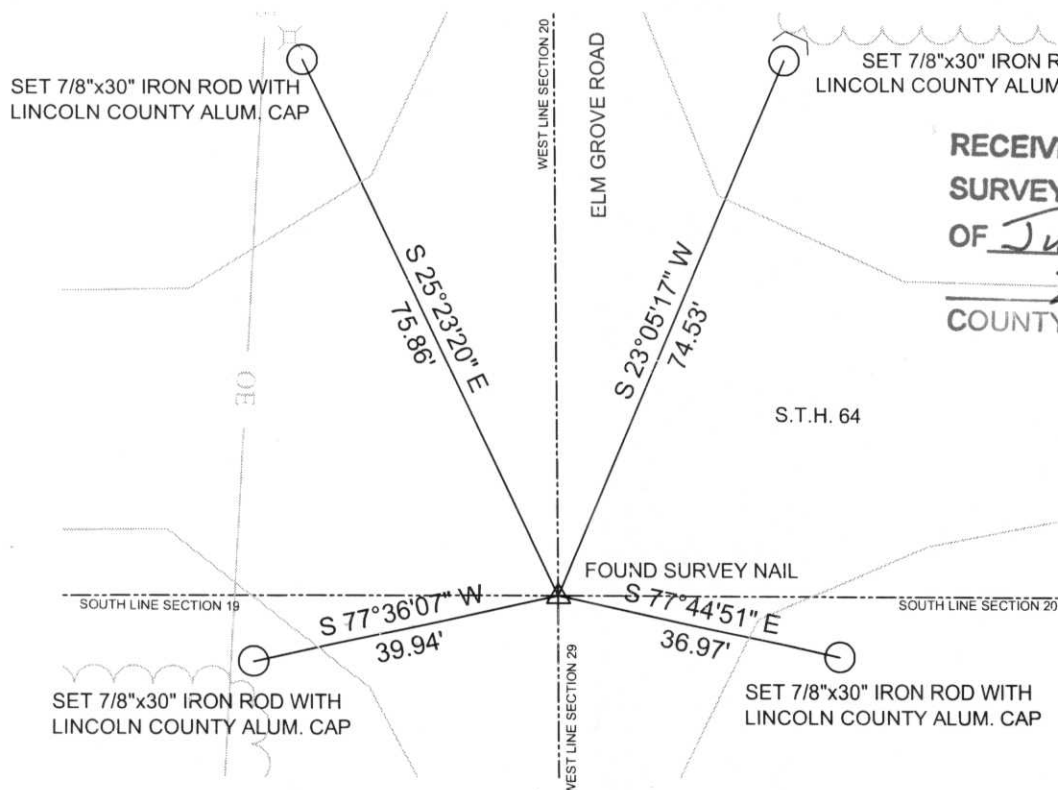
CERTIFIED CORRECT:

COMPANY: Central Wisconsin Engineers & Architects
5707 Schofield Ave.
Weston, Wisconsin 54476
(715) 359-3400

Ronald Jacobson
Ronald Jacobson RLS 2059-008
Registered Land Surveyor
DATE: July 21, 2006

TIE SKETCH:

SHOW MINIMUM OF FOUR (4) HORIZONTAL TIE DISTANCES TO FIXED WITNESS MONUMENTS.
DESCRIBE ALL MONUMENTS FOUND OR SET. ALL DISTANCES SHOWN IN US SURVEY FEET.



RECEIVED BY LINCOLN COUNTY
SURVEYOR THIS 21ST DAY
OF July 20 06
Tom Wall
COUNTY SURVEYOR

COORDINATES ARE REFERENCED TO LINCOLN COUNTY COORDINATE SYSTEM AS DEVELOPED BY THE WI. DEPARTMENT OF TRANSPORTATION AND ARE BASED ON GPS OBSERVATIONS TO CONTROL POINTS AS SUPPLIED BY LINCOLN COUNTY.

N
NOT TO SCALE
BEARINGS REFERENCED TO LINCOLN COUNTY COORDINATE SYSTEM

P-5









