

# LINCOLN COUNTY U.S. PUBLIC LAND TIE SHEET RECORD

SECTION 20  
TOWNSHIP 31N  
RANGE 5 E

203152  
NO.

**CORNING**  
CITY, VILLAGE, TOWN

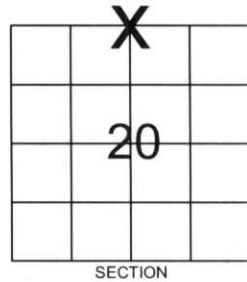
LANDMARK

CORNER INDENTITY: BERNSTEN MONUMENT

LINCOLN COUNTY COORDINATE: N: 116371.7170  
E: 340790.4510

DATE OF SURVEY: June 30, 2006  
SURVEY PARTY: Rutzen/Dahlvig

- FOUND
- SET
- RE-SET
- RE-TIED



Description of monument found at this corner and if was accepted, state all evidence (material, testimonial, occupational, plats, records, other monuments) used as a basis for accepting. If not accepted or if nothing was found, state evidence used as basis for establishing location. If reestablished through lost corner proportionate methods, indicate all monuments, distances and directions used to establish.

## BASIS FOR MONUMENT LOCATION:

(DESCRIBE METHOD OF SURVEY AND CONER AUTHENTICATION)

Found 5" X 5" stone monument, replaced with Lincoln County Bernsten Monument.



CERTIFIED CORRECT:

*[Signature]*

Ronald Jacobson RLS 2059-008

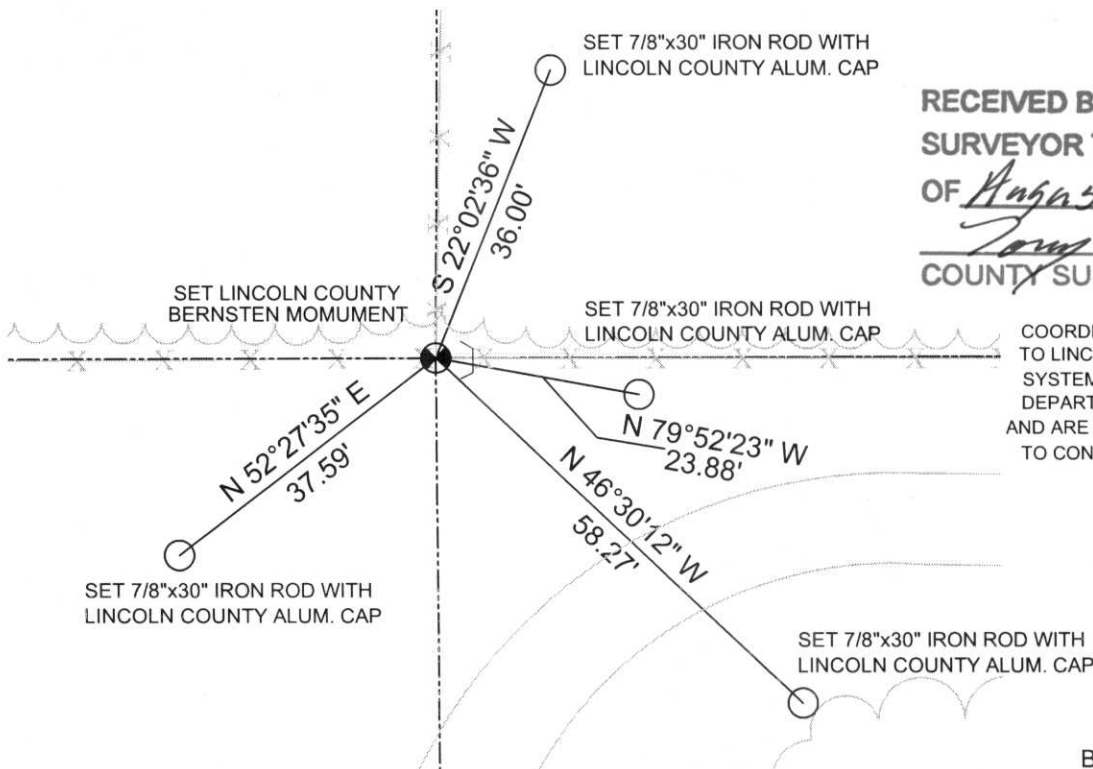
Registered Land Surveyor

DATE: Aug. 1, 2006

COMPANY: Central Wisconsin Engineers & Architects  
5707 Schofield Ave.  
Weston, Wisconsin 54476  
(715) 359-3400

## TIE SKETCH:

SHOW MINIMUM OF FOUR (4) HORIZONTAL TIE DISTANCES TO FIXED WITNESS MONUMENTS.  
DESCRIBE ALL MONUMENTS FOUND OR SET. ALL DISTANCES SHOWN IN US SURVEY FEET.



RECEIVED BY LINCOLN COUNTY  
SURVEYOR THIS 7<sup>TH</sup> DAY  
OF August 20 06  
*[Signature]*  
COUNTY SURVEYOR

COORDINATES ARE REFERENCED TO LINCOLN COUNTY COORDINATE SYSTEM AS DEVELOPED BY THE WI. DEPARTMENT OF TRANSPORTATION AND ARE BASED ON GPS OBSERVATIONS TO CONTROL POINTS AS SUPPLIED BY LINCOLN COUNTY.

NOT TO SCALE  
BEARINGS REFERENCED TO LINCOLN COUNTY COORDINATE SYSTEM













