

LINCOLN COUNTY U.S. PUBLIC LAND TIE SHEET RECORD

SECTION 13
TOWNSHIP 31N
RANGE 5 E

133154
NO.

LANDMARK

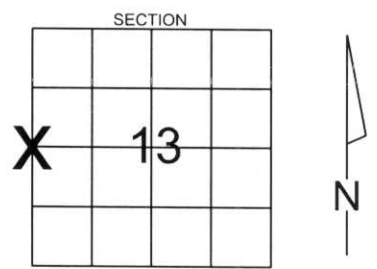
CORNING
CITY, VILLAGE, TOWN

CORNER INDENTITY: 8" x 8" GRANITE

LINCOLN COUNTY COORDINATE: N: 119017.6100
E: 359339.2770

DATE OF SURVEY: May 24, 2006
SURVEY PARTY: Rutzen/Dahlvig

FOUND
SET
RE-SET
RE-TIED



Description of monument found at this corner and if was accepted, state all evidence (material, testimonial, occupational, plats, records, other monuments) used as a basis for accepting. If not accepted or if nothing was found, state evidence used as basis for establishing location. If reestablished through lost corner proportionate methods, indicate all monuments, distances and directions used to establish.

BASIS FOR MONUMENT LOCATION:

(DESCRIBE METHOD OF SURVEY AND CONER AUTHENTICATION)

Dug with backhoe and found an 8" x 8" granite monument 1.5 feet below gravel surface.(Held)



CERTIFIED CORRECT:

Ronald Jacobson

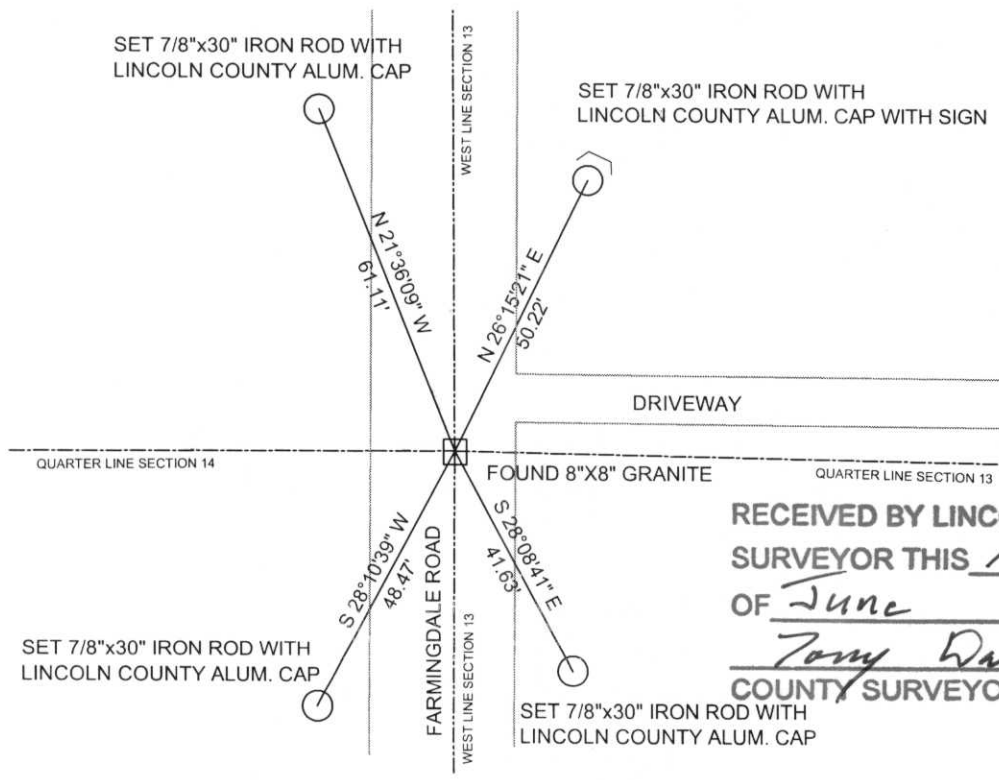
Ronald Jacobson RLS 2059-008
Registered Land Surveyor

COMPANY Central Wisconsin Engineers & Architects

DATE: June 6, 2006

TIE SKETCH:

SHOW MINIMUM OF FOUR (4) HORIZONTAL TIE DISTANCES TO FIXED WITNESS MONUMENTS. DESCRIBE ALL MONUMENTS FOUND OR SET. ALL DISTANCES SHOWN IN US SURVEY FEET.



COORDINATES ARE REFERENCED TO LINCOLN COUNTY COORDINATE SYSTEM AS DEVELOPED BY THE WI. DEPARTMENT OF TRANSPORTATION AND ARE BASED ON GPS OBSERVATIONS TO CONTROL POINTS AS SUPPLIED BY LINCOLN COUNTY.

RECEIVED BY LINCOLN COUNTY SURVEYOR THIS 12TH DAY OF June 20 06
Tony Dahl
COUNTY SURVEYOR

NOT TO SCALE
BEARINGS REFERENCED TO LINCOLN COUNTY COORDINATE SYSTEM

K-21













NI502





N1502