

CERTIFIED LAND CORNER RESTORATION

Index No. K-5

State of Wisconsin }
County of Lincoln } ss.

History of original corner establishment:
Wood post set by original government surveyor

I Sheridan D. Schwark do hereby certify that on the 12th day of July, 1982, I found evidence of the East one-quarter corner of Section 18 Township 31, North, Range 5 East, Fourth, Principal Meridian, as described hereon; and that from this evidence I established a new monument and accessories as described hereon to perpetuate the original location of this corner.

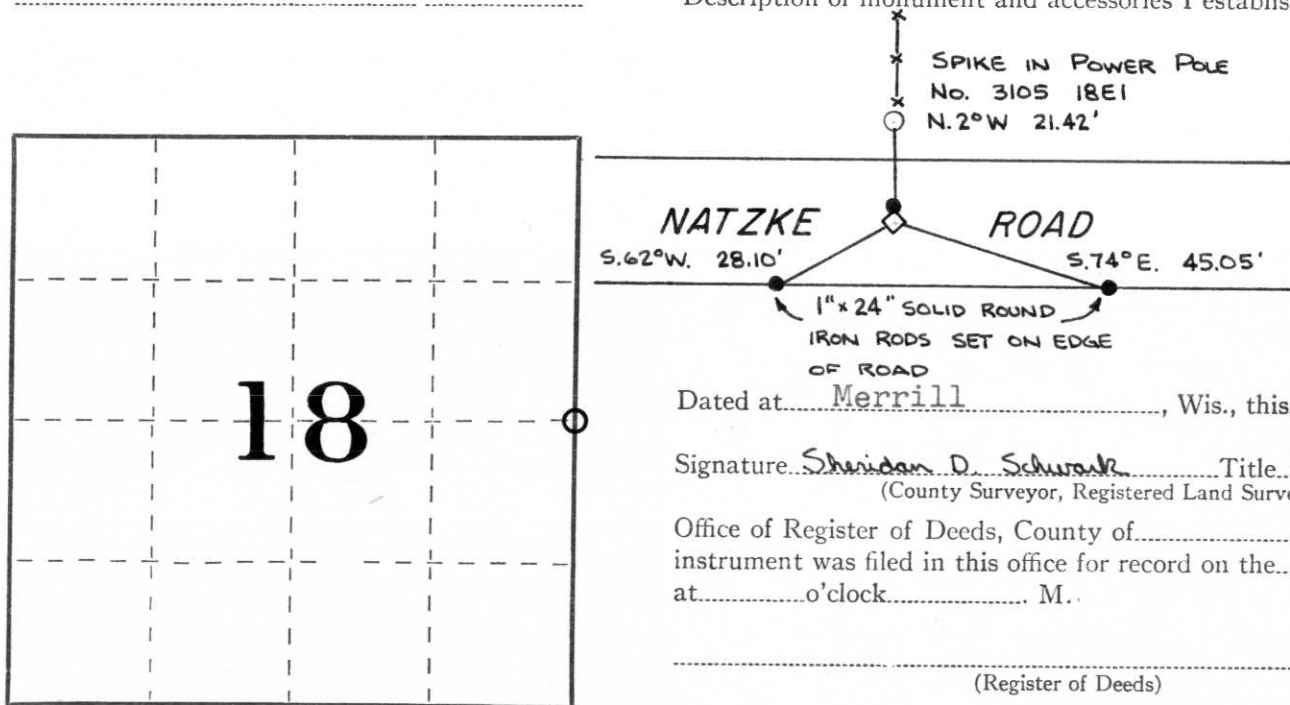
Resident witnesses:

William Behrens

Description of corner evidence found:

This corner was a 9" x 8" red granite monument with 1/4 scribed on the top. It was pointed out to us by William Behrens (Town of Corning chairman). Since it was in good shape and all of the grader and snow plow operators for the town are aware of its location we did not see a need to replace it with a Berntsen Monument. We set a 1" x 24" iron rod at the north edge of the monument and established the references as shown below.

Description of monument and accessories I established to perpetuate the original location of this corner.



Dated at Merrill, Wis., this 28th day of July, 1982

Signature Sheridan D. Schwark Title Registered Land Surveyor Registration No. S-1205
(County Surveyor, Registered Land Surveyor, or other duly authorized official)

Office of Register of Deeds, County of _____, I hereby certify that the within instrument was filed in this office for record on the _____ day of _____, 19____ at _____ o'clock _____ M.

(Register of Deeds)

By _____ Deputy

○ = Corner monument restored.