

U S PUBLIC LAND SURVEY MONUMENT RECORD

NOTE: This form is intended and designed to fulfill all requirements of Wisconsin Administrative Code, Chapter A-E 7.08 U.S. Public Land Survey Monument Record (3) (a-i)

A-E 7.08(3)(a) Identity of corner:
 SOUTHEAST CORNER SECTION 12,
 TOWNSHIP 31 NORTH,
 RANGE 05 EAST OF THE 4TH PM,
 TOWN OF CORNING,
 COUNTY OF LINCOLN

WISCRS - LINCOLN COUNTY
 N: 121,574.666 USft (121,574.657)
 E: 364,652.342 USft (364,652.360)
 Datum: NAD83 (2011)
 GNSS Method RTN - Direct
 GNSS Control WISCORS VRS



The coordinate value shown has been verified by the average of two or more GPS observations at a markedly different time. Coordinates shown in parenthesis are provided by Lincoln County.

A-E 7.08(3)(b)

Original Surveyor: James M. Marsh

Date of Original Survey Commenced: July 8, 1851
 Completed: July 28, 1851

Original Accessories:

Hemlock	18	S 18° E	17 Links
Hemlock	16	S 50° W	16 Links
Hemlock	18	N 13° W	20 Links
Birch	30	N 32° E	11 Links

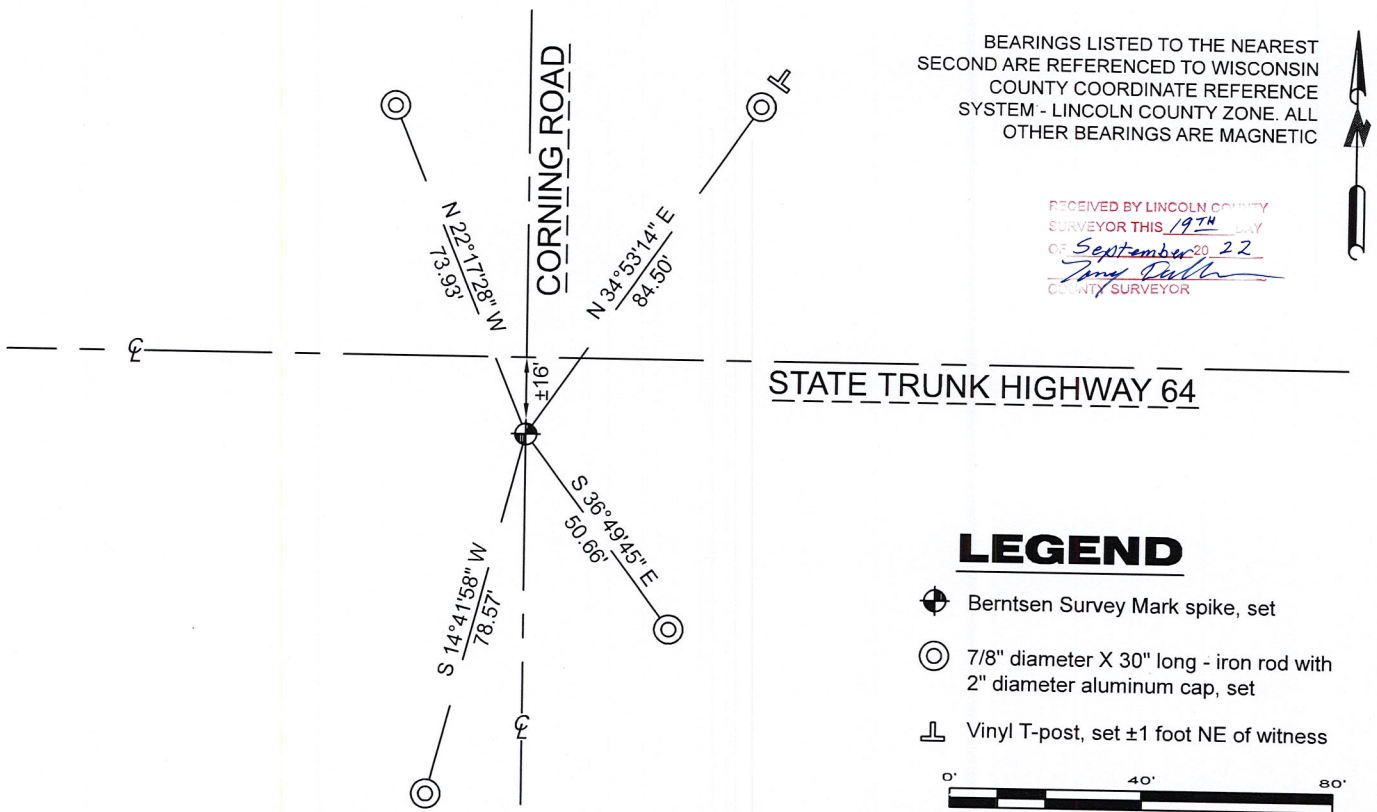
June 7, 1937 - WisDOT indicates this position as "C/L 16' N. of Sect. Line" Division Job No. 7035.

June 9, 2006 - Surveyors 2059 - Ronald K. Jacobson - indicates this position as "N121574.6600, E364652.3600 given by Lincoln County Surveyor" on Lincoln County U.S. Public Land Section summary of Section 12, Township 31 N., Range 5 E.

October 23, 2007 - Surveyor 2141 - David A. Renaud - indicates this position as "not recovered N121574.66, E364652.36" on Map L445B.

April 19, 2022 - While performing the 2022 Lincoln County PLSS Corner Remonumentation and GPS Services project, I went to the coordinate position provided by Lincoln County, I made a careful search of the area and found no evidence of the corner or witnesses. The County provided location is 16 feet south of S.T.H. 64 centerline and on the centerline of Corning Road. Under the direction of Lincoln County, I restored the corner using coordinates provided by Lincoln County and set a Berntsen Survey Mark steel spike 3" long with a 1" diameter dimpled head. I established 4 new reference monuments as shown below.

A-E 7.08(3)(c)(d) Plan view of corner with references to at least 4 witness monuments.

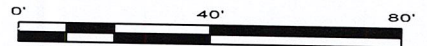


BEARINGS LISTED TO THE NEAREST SECOND ARE REFERENCED TO WISCONSIN COUNTY COORDINATE REFERENCE SYSTEM - LINCOLN COUNTY ZONE. ALL OTHER BEARINGS ARE MAGNETIC

RECEIVED BY LINCOLN COUNTY SURVEYOR THIS 19TH DAY OF September 20 22
 Jeffrey DeMuth
 COUNTY SURVEYOR

LEGEND

- Berntsen Survey Mark spike, set
- 7/8" diameter X 30" long - iron rod with 2" diameter aluminum cap, set
- Vinyl T-post, set ±1 foot NE of witness



A-E 7.08(3)(e) 1851 Surveyor set a post, 1937 WisDOT did not describe the monument, 2006 & 2007 Surveyors had coordinates. I set a Berntsen Survey Mark steel spike at coordinates provided by Lincoln County.

A-E 7.08(3)(f) I restored the corner through ACCEPTANCE OF AN OBLITERATED LOCATION.

A-E 7.08(3)(g)(h) This corner was not determined through lost-corner-proportionate methods.

A-E 7.08(3)(i) I, Jeffrey L. DeMuth, Professional Land Surveyor No. S-2656, hereby certify that the corner location on this record was determined by the Lincoln County Surveyor, and the monuments found or set as shown hereon were measured by me or under my direction and control, and that this U.S. Public Land Survey Monument Record is correct and complete to the best of my knowledge, and belief.

SIGNATURE DATE September 16, 2022



I-25

43105120000

REPORT

2022-Lincoln County PLSS Corner Remonumentation and GPS Services

Wisconsin Corner Point Identification Number: 43105120000

Surveyor: Jeffrey L. DeMuth – S2656

Corner monument: Set Berntsen "Survey Mark" steel spike, 1" diameter head, 3" long at coordinates provided.

Field Book: Cardinal North – Lincoln Co. Remon. – 2022-00

Page: 3

Horizontal Datum: WisCRS – Lincoln County Zone – NAD83(2011)

Date / time of initial measurement:

April 19, 2022 - Start 13:38:12 CDT – End 13:41:33 CDT

Reference monuments:

4 – Set - 7/8" diameter X 30" long iron rods with 2" diameter Lincoln Co. aluminum cap.

Coordinate Table

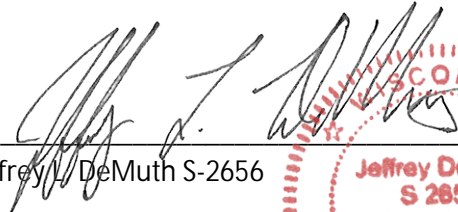
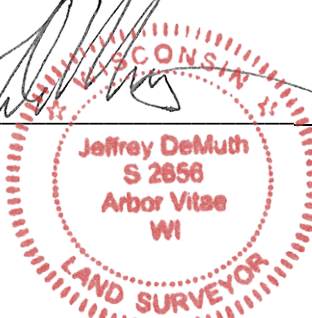
	County Provided	2022 Measurement	Difference
North	121574.657	121574.666	-0.01
East	364652.360	364652.342	0.02

Established coordinates match existing calculated coordinates within reason.

Request Data Log for more information.

Additional Notes:

Corner falls $\pm 16'$ south of STH 64 centerline, and on the centerline of Corning Road. Verified position with County Surveyor.


 Jeffrey L. DeMuth S-2656
 
 September 16, 2022
 Date

43105120000_Mon-N



43105120000_North



43105120000_West



43105120000_South



43105120000_East

