

LINCOLN COUNTY U.S. PUBLIC LAND TIE SHEET RECORD

SECTION 13
TOWNSHIP 31N
RANGE 5 E

133151

NO.

LANDMARK

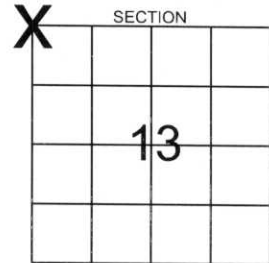
CORNER INDENTITY: SURVEY NAIL

LINCOLN COUNTY COORDINATE: N: 121675.1787
E: 359332.1322

DATE OF SURVEY: June 9, 2006
SURVEY PARTY: Rutzen/Dahlvig

CORNING
CITY, VILLAGE, TOWN

FOUND
SET
RE-SET
RE-TIED



Description of monument found at this corner and if was accepted, state all evidence (material, testimonial, occupational, plats, records, other monuments) used as a basis for accepting. If not accepted or if nothing was found, state evidence used as basis for establishing location. If reestablished through lost corner proportionate methods, indicate all monuments, distances and directions used to establish.

BASIS FOR MONUMENT LOCATION:

(DESCRIBE METHOD OF SURVEY AND CONER AUTHENTICATION)

Corner was established based on right of way plat for S.T.H. 64 and CSM #464



RECEIVED BY LINCOLN COUNTY
SURVEYOR THIS 12TH DAY
OF June 20 06
Rutzen
COUNTY SURVEYOR

CERTIFIED CORRECT:

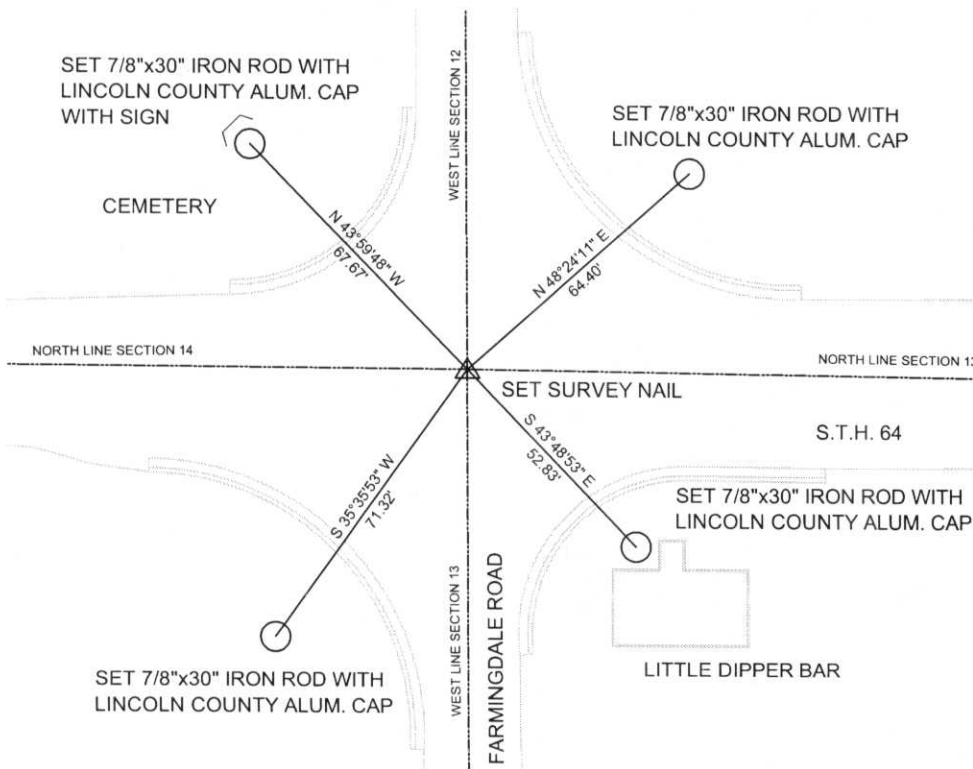
R. Jacobson
Ronald Jacobson RLS 2059-008
Registered Land Surveyor

COMPANY Central Wisconsin Engineers & Architects

DATE: June 9, 2006

TIE SKETCH:

SHOW MINIMUM OF FOUR (4) HORIZONTAL TIE DISTANCES TO FIXED WITNESS MONUMENTS. DESCRIBE ALL MONUMENTS FOUND OR SET. ALL DISTANCES SHOWN IN US SURVEY FEET.



COORDINATES ARE REFERENCED TO LINCOLN COUNTY COORDINATE SYSTEM AS DEVELOPED BY THE WI. DEPARTMENT OF TRANSPORTATION AND ARE BASED ON GPS OBSERVATIONS TO CONTROL POINTS AS SUPPLIED BY LINCOLN COUNTY.



NOT TO SCALE
BEARINGS REFERENCED
TO LINCOLN COUNTY
COORDINATE SYSTEM

E-21











STOP

