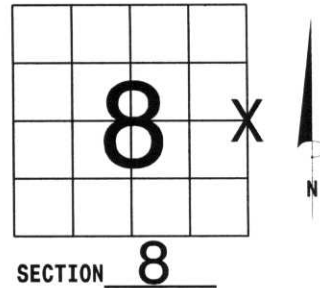


U.S. PUBLIC LAND SURVEY MONUMENT RECORD

NOTE: THIS FORM IS INTENDED AND DESIGNED TO FULFILL ALL REQUIREMENTS OF WISCONSIN ADMINISTRATIVE CODE, CHAPTER A-E 7.08 U.S. PUBLIC LAND SURVEY MONUMENT RECORD (3) (a) (b) (c) (d) (e) (f) (g) (h) (i). AN ADDITIONAL SHEET MAY BE ADDED IF NECESSARY TO CONFORM WITH SAID REQUIREMENTS.

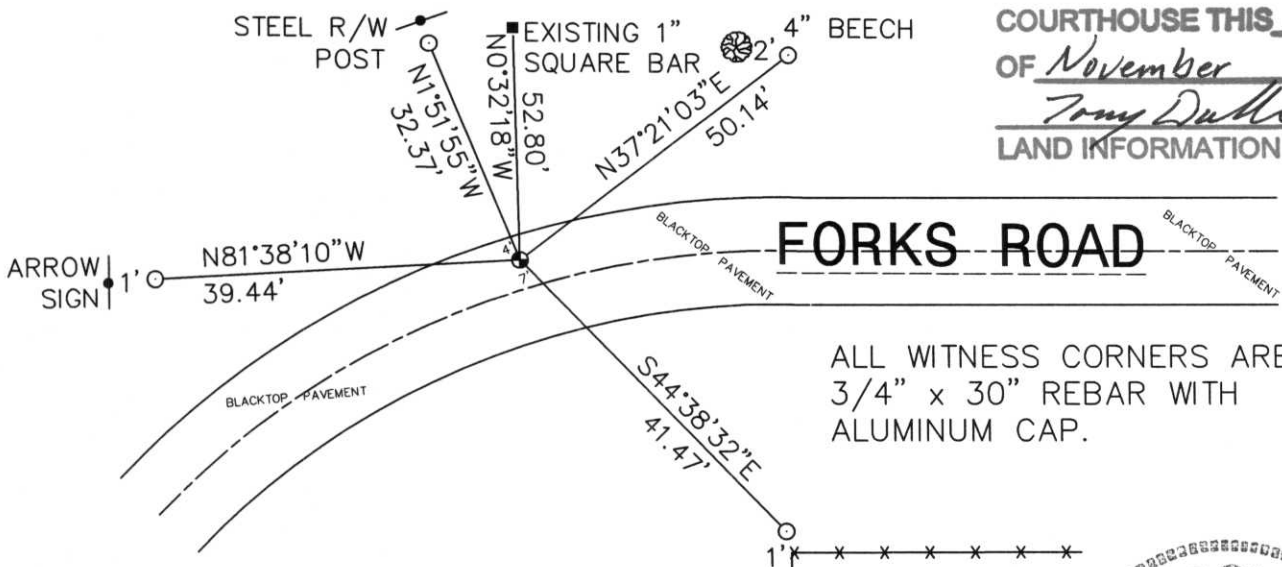
(a) CORNER LOCATION: TOWNSHIP 31 NORTH
 RANGE 5 EAST/~~WEST~~
 TOWN/CITY/VILLAGE CORNING
 COUNTY LINCOLN



(b) (f) (g) (h) DESCRIPTION OF MONUMENT FOUND AT THIS CORNER AND IF IT WAS ACCEPTED, STATE ALL EVIDENCE (MATERIAL, TESTIMONIAL, OCCUPATIONAL, PLATS, RECORDS, OTHER MONUMENTS) USED AS BASIS FOR ACCEPTING. IF NOT ACCEPTED OR IF NOTHING WAS FOUND, STATE EVIDENCE USED AS BASIS FOR ESTABLISHING LOCATION. IF REESTABLISHED THROUGH LOST CORNER PROPORTIONATE METHODS, INDICATE ALL MONUMENTS, DISTANCES AND DIRECTIONS USED TO ESTABLISH. INDICATE TYPE OF MONUMENT FOUND OR SET AND SIGN POST.

ONLY ONE TIE REMAINED FROM ORIGINAL TIE SHEET. DUG THROUGH 4" OF BLACKTOP, 8" OF GRANITE / SAND. FOUND 8" x 8" GRANITE STONE. TOP OF STONE WAS ROUGH, AS THOUGH TOP HAD BEEN BROKE OFF. FOUND 1" IRON BAR ON SOUTH SIDE. HELD AS CORNER. RETIED.

(c) (d) (e) PLAN VIEW OF CORNER WITH TIES TO AT LEAST 4 WITNESS MONUMENTS. IF IN DISAGREEMENT WITH PREVIOUSLY ESTABLISHED CORNER, SHOW THE DISTANCES BETWEEN THE TWO CORNERS AND ALSO INDICATE THE TIES TO THE DISPUTED CORNER.



RECEIVED AT LINCOLN COUNTY
 COURTHOUSE THIS 14TH DAY
 OF November 20 02
Tony Dull
 LAND INFORMATION OFFICE

ALL WITNESS CORNERS ARE
 3/4" x 30" REBAR WITH
 ALUMINUM CAP.

(i) I, DAVID L. OSTERBRINK RLS NO. S-2014
 (TYPE OR PRINT NAME) CERTIFY THAT THE CORNER
 LOCATION ON THIS RECORD WAS DETERMINED BY ME
 OR UNDER MY DIRECTION AND CONTROL AND THAT
 THIS U.S. PUBLIC LAND SURVEY MONUMENT RECORD
 IS CORRECT AND COMPLETE TO THE BEST OF MY
 KNOWLEDGE AND BELIEF.

David L. Osterbrink 10-28-02
 SIGNATURE DATE



STAMP

6-9

CERTIFIED LAND CORNER RESTORATION

Index No. G-9

State of Wisconsin }
County of LINCOLN } ss.

History of original corner establishment: OLD STONE MONUMENT

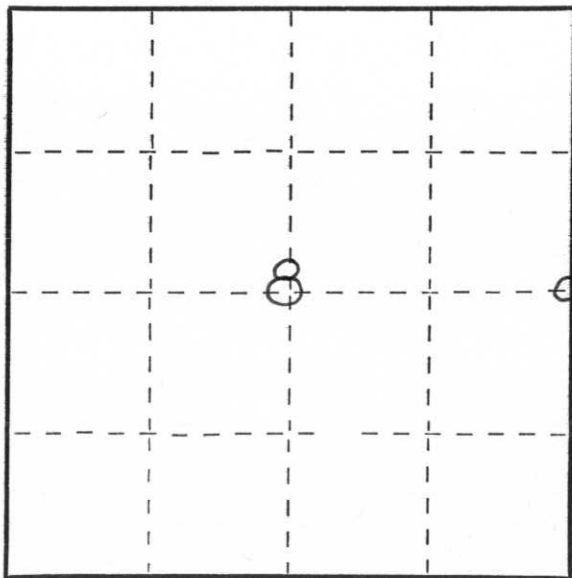
I DWANE A. GAU, do hereby certify that on the 15TH day of AUGUST, 19 78, I found evidence of the EAST 1/4 corner of SECTION 8 Township 31, North, Range 5 EAST, Fourth, Principal Meridian, as described hereon; and that from this evidence I established a new monument and accessories as described hereon to perpetuate the original location of this corner.

Description of corner evidence found:

FOUND OLD STONE MONUMENT 6" BELOW GRAVEL SURFACE OF THE TOWN ROAD

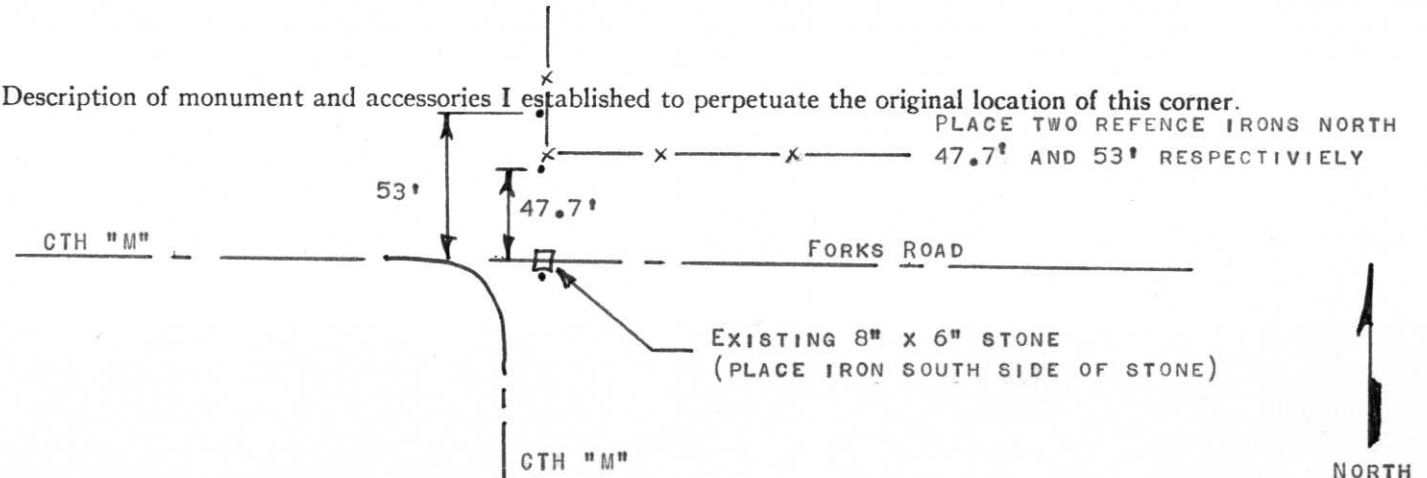
Resident witnesses:

.....
.....
.....



○ = Corner monument restored.

Description of monument and accessories I established to perpetuate the original location of this corner.



PLACE TWO REFERENCE IRONS NORTH 47.7' AND 53' RESPECTIVELY

Dated at MERRILL, Wis., this 17TH day of AUGUST, 19 78

Signature Dwane A. Gau Title HIGHWAY COMMISSIONER Registration No.
(County Surveyor, Registered Land Surveyor, or other duly authorized official)

Office of Register of Deeds, County of, I hereby certify that the within instrument was filed in this office for record on the day of, 19..... at o'clock M.

.....
(Register of Deeds)

By Deputy





