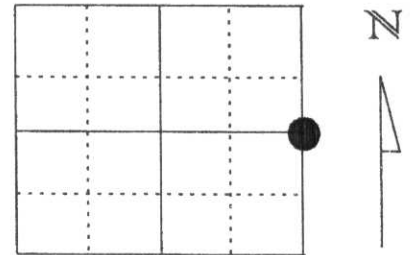


U.S. PUBLIC LAND SURVEY MONUMENT RECORD

Note: This form is intended and designed to fulfill all requirements of Wisconsin Administrative Code, Chapter A-E 5.02, U.S. Public Land Survey Monument Record (3) (a) (b) (c) (d) (e) (f) (g) (h) (l). An additional sheet may be added if necessary to conform with said requirements.

(a) Corner location: Township 31 North
 Range 5 East
 Town/City/Village TN OF CORNING
 County Lincoln



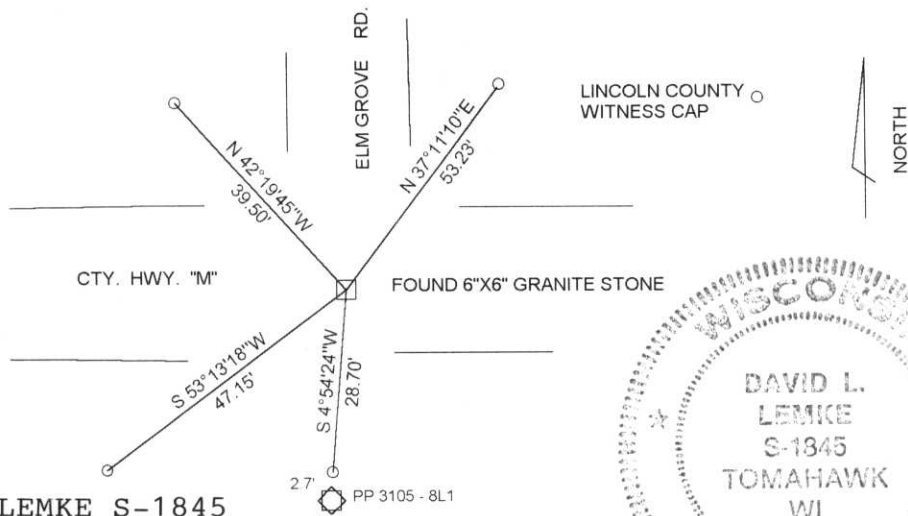
Section 7

(b) (f) (g) (h) Description of monument found at this corner and if it was accepted, state all evidence (material, testimonial, occupational, plats, records, other monuments) used as a basis for accepting. If not accepted or if nothing was found, state evidence used as basis for establishing location. If reestablished through lost corner proportionate methods, indicate all monuments, distances and directions used to establish.

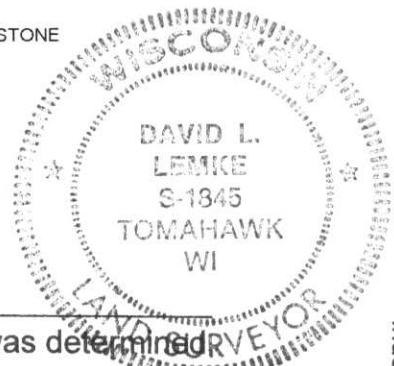
EXCAVATED INTERSECTION OF HWY. 'M' & ELM GROVE RD FOUND A 6"X6" GRANITE STONE 1 1/2' BELOW PAVEMENT ON C/L C/L. SET WITNESS CAPS AS SHOWN.

(c) (d) (e) Plan view of corner with ties to at least 4 witness monuments. If in disagreement with previously established corner, show the distances between the two corners and also indicate the ties to the disputed corner.

RECEIVED AT LINCOLN COUNTY COURTHOUSE THIS 26th DAY OF April 19 98
 BY Pat Drube
 TAX DESCRIPTION OFFICE



DAVID L. LEMKE S-1845



(l) I, David L. Lemke
 (type or print name) certify that the corner location on this record was determined by me or under my direction and control and that this U.S. Public Land Survey Monument Record is correct and complete to the best of my knowledge and belief.

Signature [Signature] Date MAR. 30 1998

CERTIFIED LAND CORNER RESTORATION

Index No. G-5

State of Wisconsin }
County of LINCOLN } ss.

History of original corner establishment:

OLD STONE MONUMENT

I FRANCIS X FOX, do hereby certify that on the 3RD day of JUNE, 1974, I found evidence of the WEST 1/4 corner of SECTION 8 Township 31, North, Range 5 EAST, Fourth, Principal Meridian, as described hereon; and that from this evidence I established a new monument and accessories as described hereon to perpetuate the original location of this corner.

Description of corner evidence found:

OLD STONE MONUMENT
4" BELOW SURFACE OF ROAD

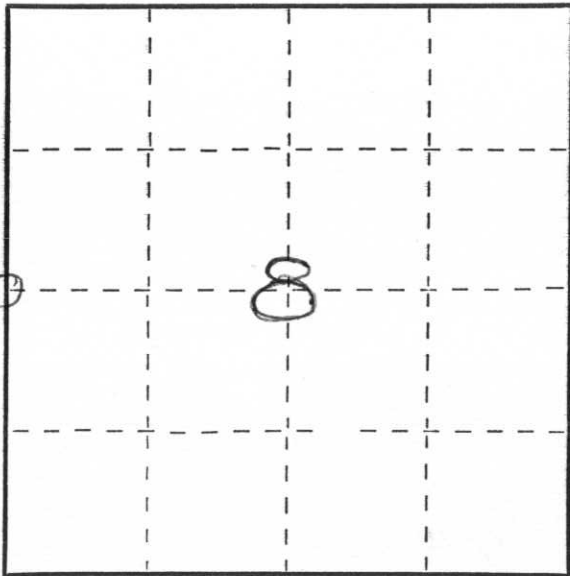
Resident witnesses:

.....
.....
.....

Description of monument and accessories I established to perpetuate the original location of this corner.

PLACE TWO REFERENCE IRONS SOUTH
33' AND 53' RESPECTIVELY,

14.



○ = Corner monument restored.
FOUND

Dated at MERRILL, Wis., this 5TH day of JUNE, 1974.

Signature Francis X Fox Title LAND SURVEYOR Registration No. 46
(County Surveyor, Registered Land Surveyor, or other duly authorized official)

Office of Register of Deeds, County of....., I hereby certify that the within instrument was filed in this office for record on the..... day of....., 19..... at..... o'clock..... M.

.....
(Register of Deeds)

By..... Deputy





