

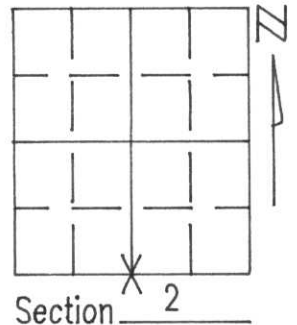
U.S. PUBLIC LAND SURVEY MONUMENT RECORD

Note: This form is intended and designed to fulfill all requirements of Wisconsin Administrative Code, Chapter A-E 5.02, U.S. Public Land Survey Monument Record (3)(a)(b)(c)(d)(e)(f)(g)(h)(i). An additional sheet may be added if necessary to conform with said requirements.

(a) Corner location: Township 31 North
 Range 5 East

(Town)/City/Village SCOTT

County LINCOLN

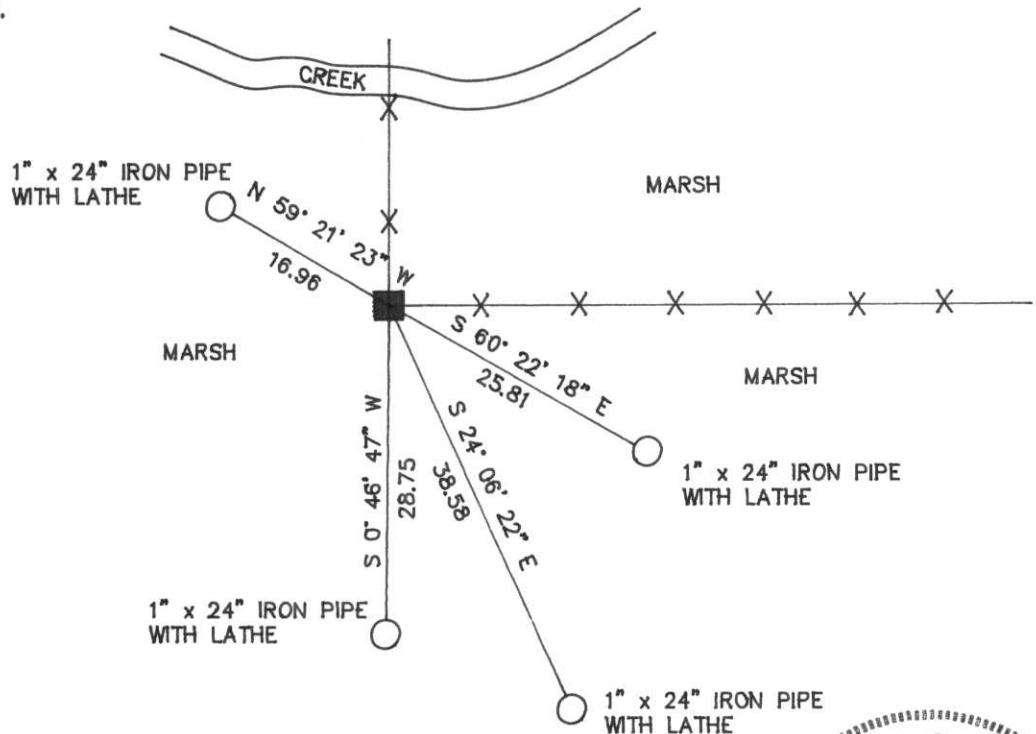


(b)(f)(g)(h) Description of monument found at this corner and if it was accepted, state all evidence (material, testimonial, occupational, plats, records, other monuments) used as a basis for accepting. If not accepted or if nothing was found, state evidence used as basis for establishing location. If reestablished through lost corner proportionate methods, indicate all monuments, distances and directions used to establish.

The ties established in 1979 have since been destroyed. We retied the stone monument found at the corner.

RECEIVED AT LINCOLN COUNTY
 COURTHOUSE THIS 19th DAY
 OF June 1995
Pat Priebe
 TAX DESCRIPTION OFFICE

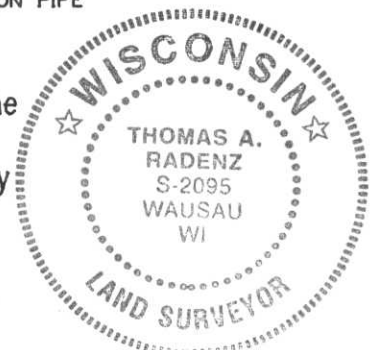
(c)(d)(e) Plan view of corner with ties to at least 4 witness monuments. If in disagreement with previously established corner, show the distances between the two corners and also indicate the ties to the disputed corner.



I, Thomas A Radenz, R.L.S. No. 2095
 certify that the corner location on this record was determined by me or under my direction and control and that this U.S. Public Land Survey Monument Record is correct and complete to the best of my knowledge and belief.

Thomas A. Radenz
 Signature

6-12-95
 Date



Index No. E-19

CERTIFIED LAND CORNER RESTORATION

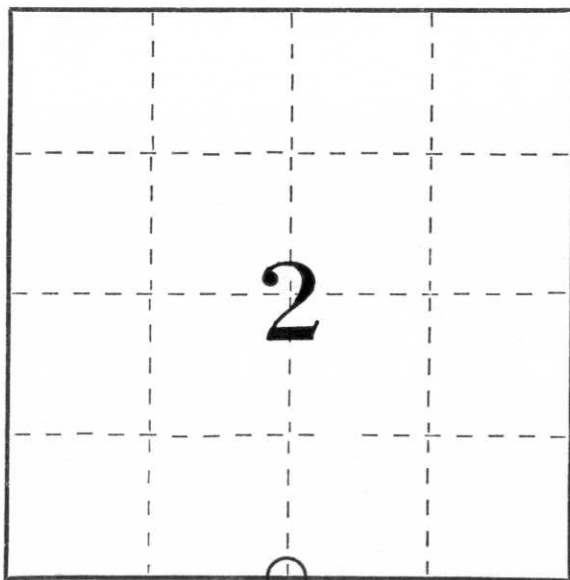
Index No. E-19

State of Wisconsin }
 County of Lincoln } ss.

I Sheridan D. Schwark, do hereby certify that on the 21st day of May, 1979, I found evidence of the South one-quarter corner of Section 2 Township 31, North, Range 5 East, Fourth, Principal Meridian, as described hereon; and that from this evidence I established a new monument and accessories as described hereon to perpetuate the original location of this corner.

Resident witnesses:

.....



○ = Corner monument restored.

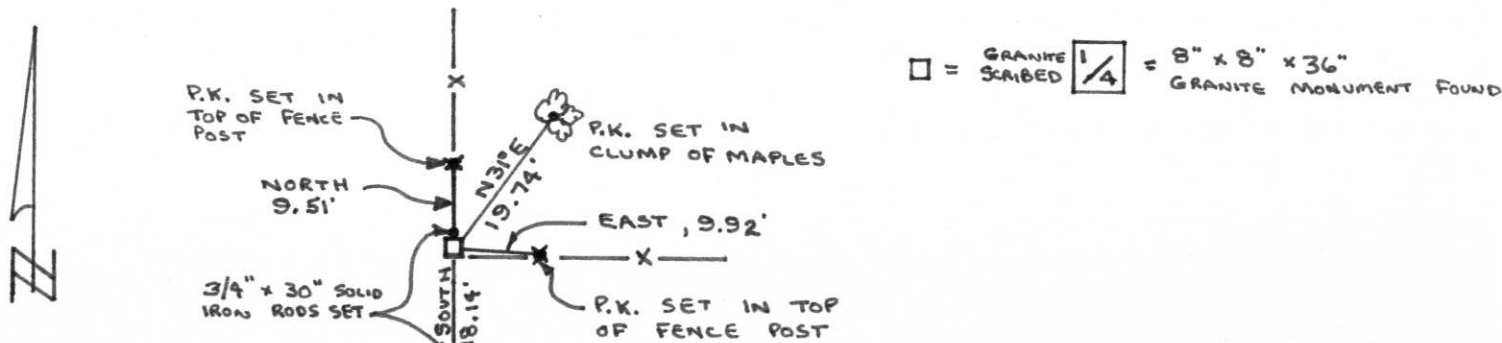
History of original corner establishment:

Date: October, 1852
 Surveyor: Richard Chaney
 Monument: Wood Post
 Witnesses: 12" Birch S82W 42 links
 8" Balsam NO5W 50 links

Description of corner evidence found:

We found a red granite monument at a fence corner. The stone, 8"x8"x36", was lying on its side. We set it upright at its base in the best location we could establish and set an iron rod on the north side of the stone. The stone was set by Louis Kleinschmidt in 1903. His map is on record in the Lincoln County Register of Deeds Office.

Description of monument and accessories I established to perpetuate the original location of this corner.



Dated at Wausau, Wis., this 30th day of July, 1979.

Signature Sheridan D. Schwark Title Registered Land Surveyor Registration No. S-1205
 (County Surveyor, Registered Land Surveyor, or other duly authorized official)

Office of Register of Deeds, County of _____, I hereby certify that the within instrument was filed in this office for record on the _____ day of _____, 19____ at _____ o'clock _____ M.

(Register of Deeds)

By _____ Deputy