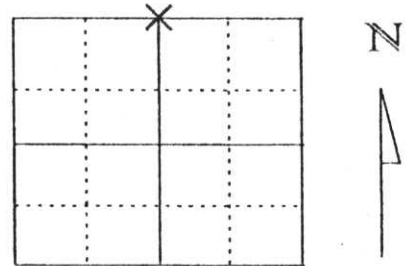


# U.S. PUBLIC LAND SURVEY MONUMENT RECORD

Note: This form is intended and designed to fulfill all requirements of Wisconsin Administrative Code, Chapter A-E 5.02, U.S. Public Land Survey Monument Record (3) (a) (b) (c) (d) (e) (f) (g) (h) (l). An additional sheet may be added if necessary to conform with said requirements.

(a) Corner location: Township 31 North  
 Range 5 East  
 Town/City/Village CORNING EAST  
 County Lincoln



Section 10

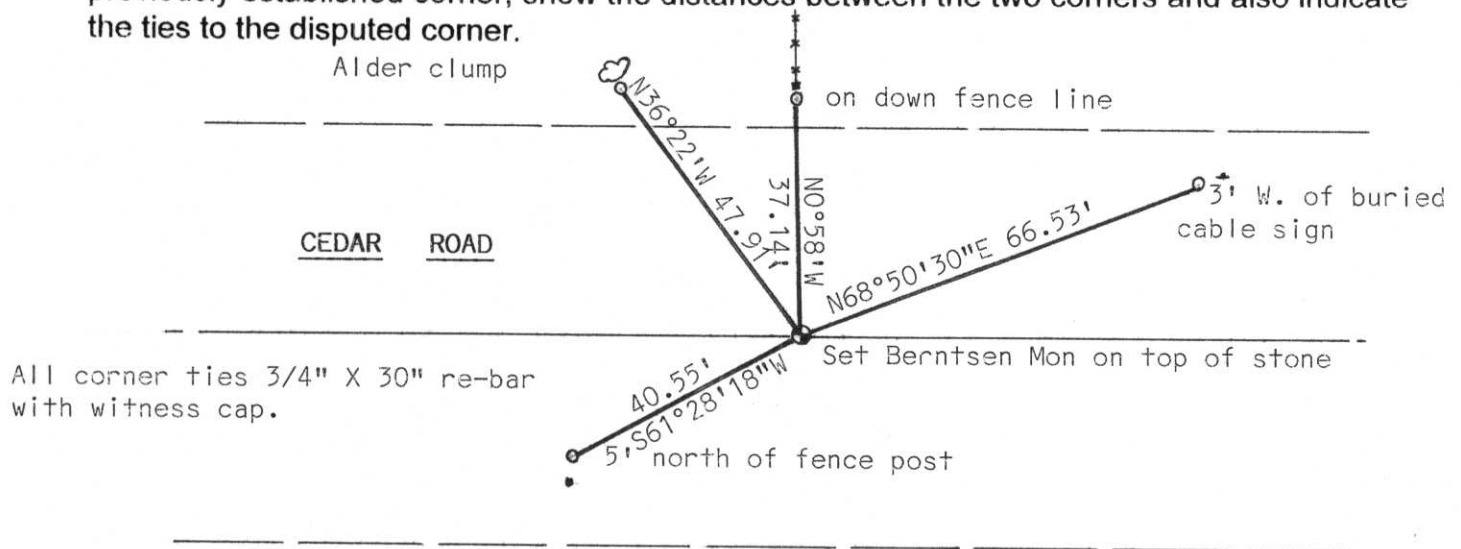
(b) (f) (g) (h) Description of monument found at this corner and if it was accepted, state all evidence (material, testimonial, occupational, plats, records, other monuments) used as a basis for accepting. If not accepted or if nothing was found, state evidence used as basis for establishing location. If reestablished through lost corner proportionate methods, indicate all monuments, distances and directions used to establish.

Dug with Lincoln County backhoe. Found 8" X 8" granite monument 3 feet below road surface in good condition. Because of depth of stone set Berntsen monument over stone. Found down fence line on line to north. Did not find any other corner accessories. Included in traverse and accepted as correct.

RECEIVED AT LINCOLN COUNTY  
 COURTHOUSE THIS 3rd DAY  
 OF Dec. 19 98  
Pat Priole  
 LAND INFORMATION OFFICE



(c) (d) (e) Plan view of corner with ties to at least 4 witness monuments. If in disagreement with previously established corner, show the distances between the two corners and also indicate the ties to the disputed corner.



All corner ties 3/4" X 30" re-bar with witness cap.

(l) I, Edwin R. Abendroth RLS no. S-798  
 (type or print name) certify that the corner location on this record was determined by me or under my direction and control and that this U.S. Public Land Survey Monument Record is correct and complete to the best of my knowledge and belief.

Edwin R. Abendroth December 2, 1998  
 Signature Date

Index No. E-15





