

LINCOLN COUNTY U.S. PUBLIC LAND SURVEY MONUMENT LOCATION RECORD

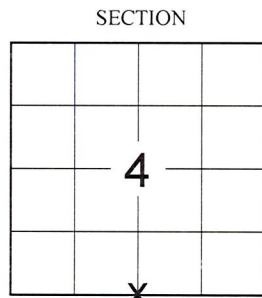
SECTION 4
 TOWNSHIP 31N
 RANGE 5E

E-11
 NO.

LANDMARK BENCHMARK
 CORNER IDENTITY: 7" X 7" GRANITE MONUMENT
 FOUND SET
 RESET RE-TIED

CORNING
 CITY, VILLAGE, TOWN

LINCOLN COUNTY COORDINATE: N: _____
 E: _____



SECTION
 LOCATION (Indicated By X)

ELEVATION-(FEET): _____ DATUM: _____

WEATHER: OVERCAST

DATE OF SURVEY: 11/28/18 TEMPERATURE: 25 °F

SURVEY PARTY: SAM HAUGEN & GUNNER GRENLIE

BASIS FOR MONUMENT LOCATION:
 (DESCRIBE METHOD OF SURVEY AND CORNER AUTHENTICATION)

FOUND THE RECORD STONE WITH A 3/4" REBAR PLACED ALONG THE NORTH FACE OF THE MONUMENT AT THE CORNER LOCATION. THE STONE AND REBAR APPEARED TO HAVE BEEN DISTURBED. THE COORDINATES SUPPLIED BY LINCOLN COUNTY PLACED THE LOCATION AT THE SOUTHEAST CORNER OF THE DISTURBED STONE. FOUND ALL FOUR (4) REMAINING TIES BUT THE RECORD DISTANCES TO THE STONE DID NOT FIT THE SUPPLIED COORDINATES OR MATCH THE FOUND STONE. THE LOCATION PER THE SUPPLIED COORDINATES DID HOWEVER MATCH THE DISTANCE TO THE ADJOINING SECTION CORNER TO THE WEST PER THE SUBDIVISION OF SECTION SECTION 9. HELD SUPPLIED COORDINATES AS BEST AVAILABLE EVIDENCE FOR CORNER LOCATION. STONE AND REBAR WERE NOT ADJUSTED TO THE COORDINATE LOCATION DUE TO FROST CONDITIONS IN THE ROAD. PERPETUATED CORNER AS SHOWN BELOW.

FIELD BOOK NO. NA PAGE NO. NA

COMPANY RIVERSIDE LAND SURVEYING LLC

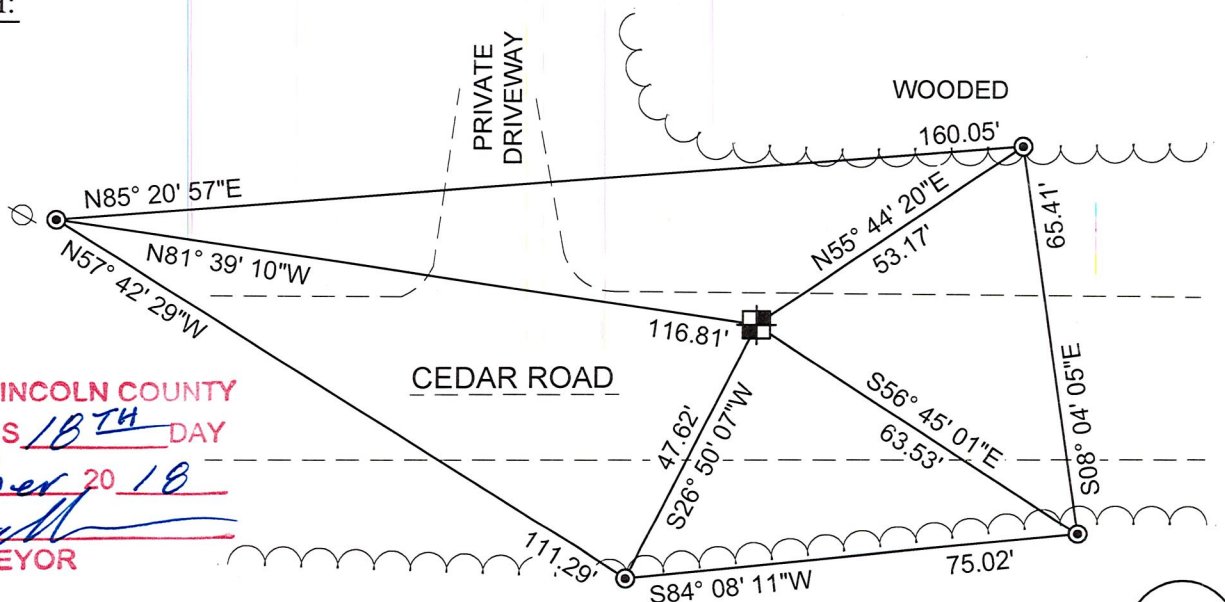
CERTIFIED CORRECT:

Nathan J. Wincentesen
 NATHAN J. WINCENTSEN S-2539
 Professional Land Surveyor

DATE: 12-4-18



TIE SKETCH:



RECEIVED BY LINCOLN COUNTY SURVEYOR THIS 18TH DAY OF December 20 18
Zany Dahl
 COUNTY SURVEYOR

- 7" X 7" GRANITE MONUMENT
- FOUND 3/4" REBAR WITH LINCOLN COUNTY ALUM CAP
- EXISTING UTILITY POLE

E-11
 NO.

LINCOLN COUNTY U.S. PUBLIC LAND TIE SHEET RECORD

SECTION 4
TOWNSHIP 31N
RANGE 5 E

43157
NO.

LANDMARK

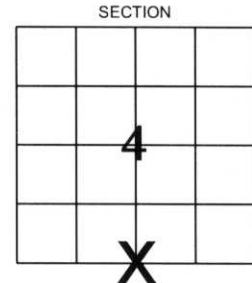
CORNING
OFFY, VILLAGE, TOWN

CORNER INDENTITY: 7" X 7" GRANITE MONUMENT

LINCOLN COUNTY COORDINATE: N: 126929.1040
E: 346107.1650

DATE OF SURVEY: July 5, 2006
SURVEY PARTY: Rutzen/Seubert

FOUND
SET
RE-SET
RE-TIED



Description of monument found at this corner and if was accepted, state all evidence (material, testimonial, occupational, plats, records, other monuments) used as a basis for accepting. If not accepted or if nothing was found, state evidence used as basis for establishing location. If reestablished through lost corner proportionate methods, indicate all monuments, distances and directions used to establish.

BASIS FOR MONUMENT LOCATION:

(DESCRIBE METHOD OF SURVEY AND CONER AUTHENTICATION)

Found 7" X 7" granite monument.



CERTIFIED CORRECT:

Ronald Jacobson

Ronald Jacobson RLS 2059-008
Registered Land Surveyor

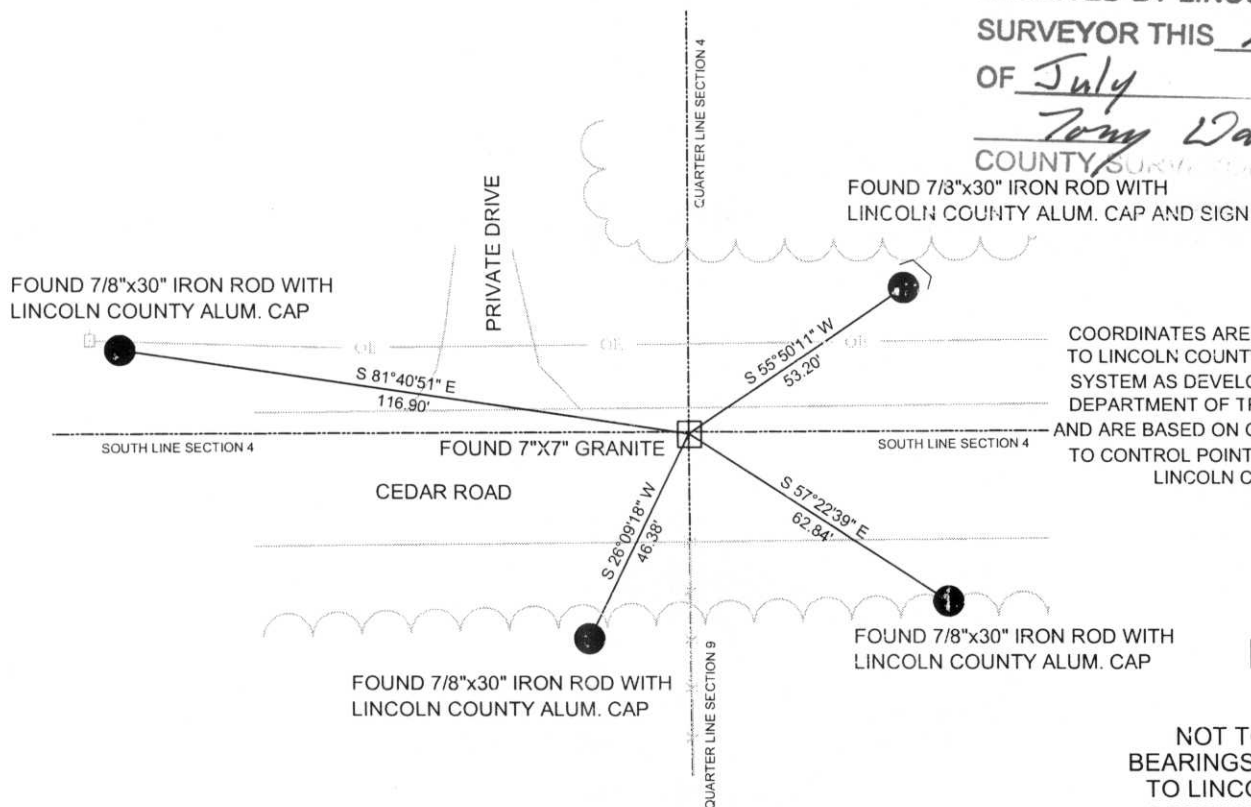
DATE: July 21, 2006

COMPANY: Central Wisconsin Engineers & Architects
5707 Schofield Ave.
Weston, Wisconsin 54476
(715) 359-3400

TIE SKETCH:

SHOW MINIMUM OF FOUR (4) HORIZONTAL TIE DISTANCES TO FIXED WITNESS MONUMENTS.
DESCRIBE ALL MONUMENTS FOUND OR SET. ALL DISTANCES SHOWN IN US SURVEY FEET.

RECEIVED BY LINCOLN COUNTY
SURVEYOR THIS 21ST DAY
OF July 20 06
Tom Wall
COUNTY SURVEYOR



COORDINATES ARE REFERENCED TO LINCOLN COUNTY COORDINATE SYSTEM AS DEVELOPED BY THE WI. DEPARTMENT OF TRANSPORTATION AND ARE BASED ON GPS OBSERVATIONS TO CONTROL POINTS AS SUPPLIED BY LINCOLN COUNTY.

NOT TO SCALE
BEARINGS REFERENCED TO LINCOLN COUNTY COORDINATE SYSTEM

E-11

LINCOLN COUNTY U.S. PUBLIC LAND TIE SHEET RECORD

SECTION 4
TOWNSHIP 31N
RANGE 5 E

43157
NO.

LANDMARK

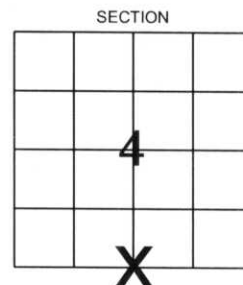
CORNING
CITY, VILLAGE, TOWN

CORNER INDENTITY: 7" X 7" GRANITE MONUMENT

LINCOLN COUNTY COORDINATE: N: 126929.1040
E: 346107.1650

DATE OF SURVEY: July 5, 2006
SURVEY PARTY: Rutzen/Seubert

FOUND
SET
RE-SET
RE-TIED



Description of monument found at this corner and if was accepted, state all evidence (material, testimonial, occupational, plats, records, other monuments) used as a basis for accepting. If not accepted or if nothing was found, state evidence used as basis for establishing location. If reestablished through lost corner proportionate methods, indicate all monuments, distances and directions used to establish.

BASIS FOR MONUMENT LOCATION:

(DESCRIBE METHOD OF SURVEY AND CONER AUTHENTICATION)

Found 7" X 7" granite monument.



CERTIFIED CORRECT:

Ronald K. Jacobson

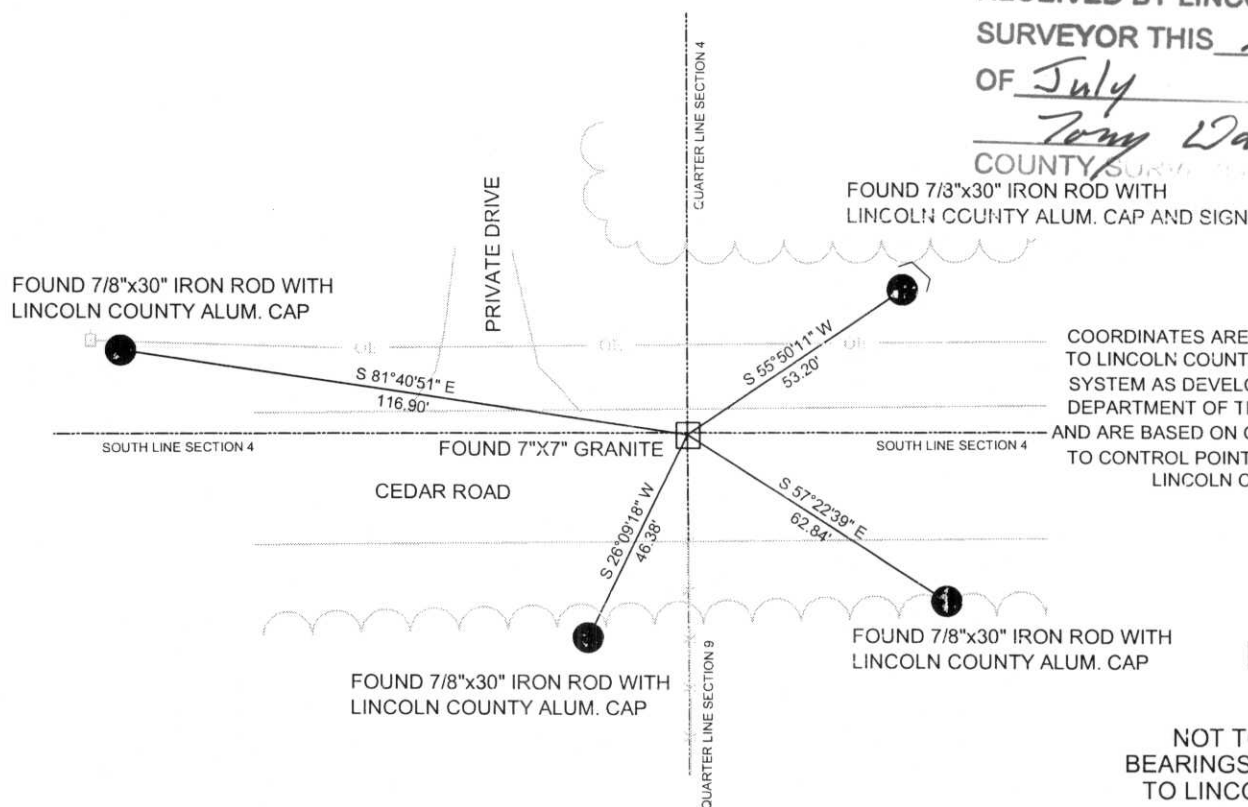
Ronald Jacobson RLS 2059-008
Registered Land Surveyor

DATE: July 21, 2006

COMPANY: Central Wisconsin Engineers & Architects
5707 Schofield Ave.
Weston, Wisconsin 54476
(715) 359-3400

TIE SKETCH:

SHOW MINIMUM OF FOUR (4) HORIZONTAL TIE DISTANCES TO FIXED WITNESS MONUMENTS.
DESCRIBE ALL MONUMENTS FOUND OR SET. ALL DISTANCES SHOWN IN US SURVEY FEET.



RECEIVED BY LINCOLN COUNTY
SURVEYOR THIS 21ST DAY
OF July 20 06
Tom Wall
COUNTY SURVEYOR

COORDINATES ARE REFERENCED TO LINCOLN COUNTY COORDINATE SYSTEM AS DEVELOPED BY THE WI. DEPARTMENT OF TRANSPORTATION AND ARE BASED ON GPS OBSERVATIONS TO CONTROL POINTS AS SUPPLIED BY LINCOLN COUNTY.

NOT TO SCALE
BEARINGS REFERENCED TO LINCOLN COUNTY COORDINATE SYSTEM

11-7















