

# LINCOLN COUNTY U.S. PUBLIC LAND SURVEY MONUMENT LOCATION RECORD

SECTION 4  
TOWNSHIP 31N  
RANGE 5E

C-13  
NO.

LANDMARK       BENCHMARK \_\_\_\_\_  
CORNER IDENTITY: 7" X 7" GRANITE MONUMENT

FOUND   
SET   
RESET   
RE-TIED

LINCOLN COUNTY COORDINATE: N: \_\_\_\_\_  
E: \_\_\_\_\_

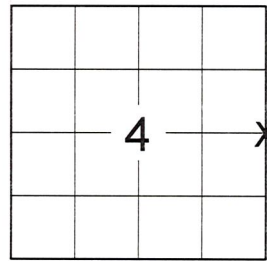
ELEVATION-(FEET): \_\_\_\_\_ DATUM: \_\_\_\_\_

WEATHER: OVERCAST

DATE OF SURVEY: 11/29/18 TEMPERATURE: 25 °F

SURVEY PARTY: SAM HAUGEN & GUNNER GRENLIE

**CORNING**  
CITY, VILLAGE, TOWN



LOCATION  
(Indicated By X)



## BASIS FOR MONUMENT LOCATION:

(DESCRIBE METHOD OF SURVEY AND CORNER AUTHENTICATION)

FOUND THE RECORD MONUMENT TIPPED SOUTH AT THE CORNER LOCATION. FOUND ONE REMAINING RECORD TIE TO THE NORTH WHICH CONFIRMED STONE WAS DISTURBED. CHECKED THE ONE REMAINING TIE TO THE SUPPLIED COUNTY COORDINATES FROM LINCOLN COUNTY AND THEY MATCH. RESET CORNER AT SUPPLIED COORDINATES AND PERPETUATED AS SHOWN BELOW.



FIELD BOOK NO. NA PAGE NO. NA

COMPANY RIVERSIDE LAND SURVEYING LLC

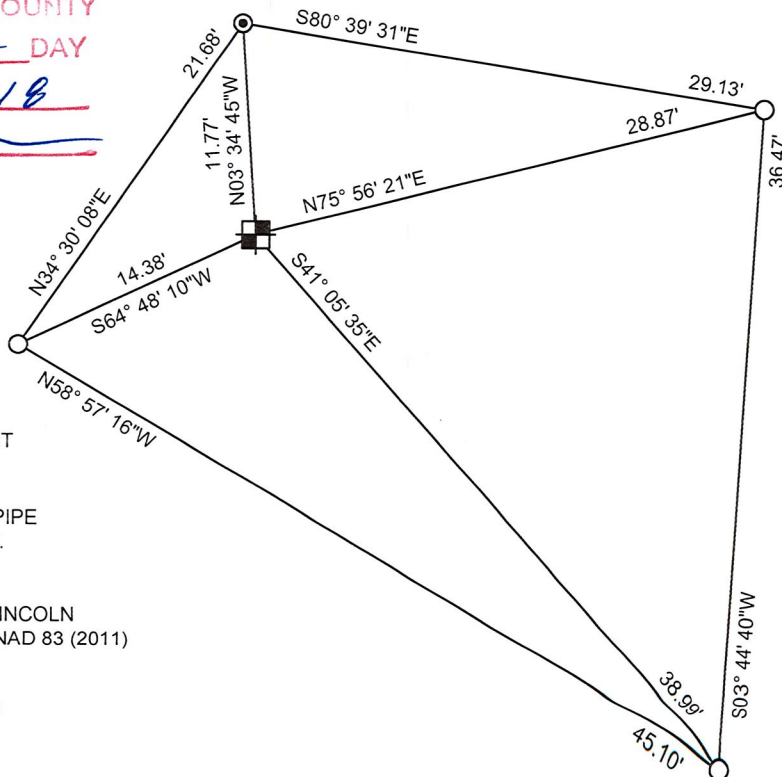
CERTIFIED CORRECT:

*Nathan J. Wincentsen*  
NATHAN J. WINCENTSEN S-2539  
Professional Land Surveyor

DATE: 12-11-18

## TIE SKETCH:

RECEIVED BY LINCOLN COUNTY  
SURVEYOR THIS 18TH DAY  
OF December 20 18  
*Tom Dahl*  
COUNTY SURVEYOR



- 7" X 7" GRANITE MONUMENT
- FOUND 1" IRON ROD
- SET 1-1/4" O.D. x 48" IRON PIPE WEIGHING 1.68 LBS/LIN. FT.

BEARINGS ARE BASED ON THE LINCOLN COUNTY COORDINATE SYSTEM NAD 83 (2011) AND REFERENCED AS SHOWN

THIS DRAWING IS NOT TO SCALE

C-13  
NO.

CERTIFIED LAND CORNER RESTORATION

Index No. C-13

State of Wisconsin }  
County of Lincoln } ss.

History of original corner establishment:  
Original wood post set by government surveyor

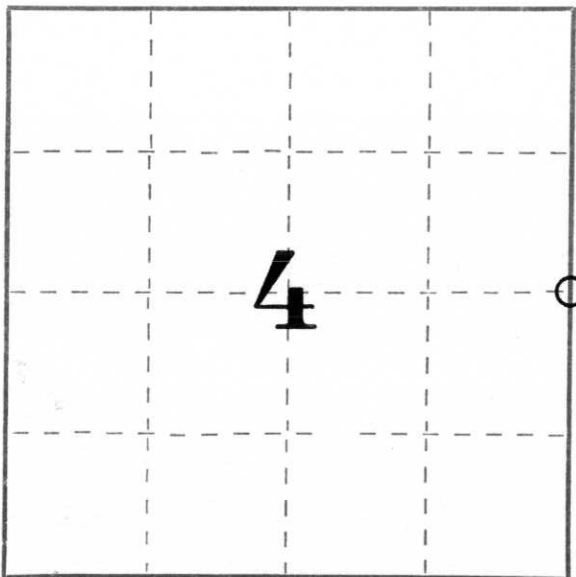
I Sheridan D. Schwark, do hereby certify that on the 3rd day of August, 1982, I found evidence of the East one-quarter corner of Section 4 Township 31, North, Range 5 East, Fourth, Principal Meridian, as described hereon; and that from this evidence I established a new monument and accessories as described hereon to perpetuate the original location of this corner.

Description of corner evidence found:  
After being told about the corner by Elmer Kanitz (Town of Corning employee) we found a 7" x 7" x 36" red granite up approximately 30". We reset the monument, set an iron rod at the south edge of the granite and established the references shown below.

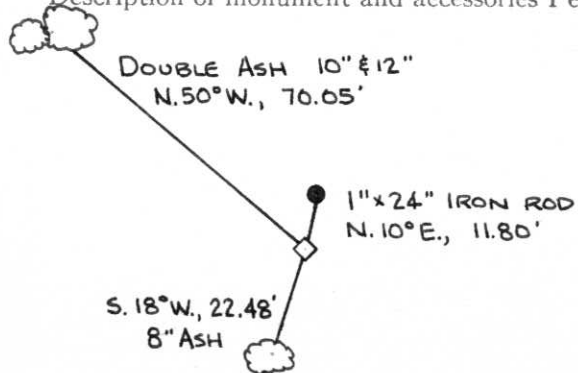
Resident witnesses:

.....  
.....  
.....

Description of monument and accessories I established to perpetuate the original location of this corner.



○ = Corner monument restored.



Dated at Merrill, Wis., this 4th day of August, 19 82.

Signature Sheridan D. Schwark Title Registered Land Surveyor Registration No. S-1205  
(County Surveyor, Registered Land Surveyor, or other duly authorized official)

Office of Register of Deeds, County of \_\_\_\_\_, I hereby certify that the within instrument was filed in this office for record on the \_\_\_\_\_ day of \_\_\_\_\_, 19 \_\_\_\_\_ at \_\_\_\_\_ o'clock \_\_\_\_\_ M.

.....  
(Register of Deeds)

By \_\_\_\_\_ Deputy





