

LINCOLN COUNTY U.S. PUBLIC LAND TIE SHEET RECORD

SECTION 34
TOWNSHIP 31N
RANGE 4 E

343147

NO.

LANDMARK

CORNING

CITY, VILLAGE, TOWN

CORNER IDENTIFY: BERNSTEN MONUMENT

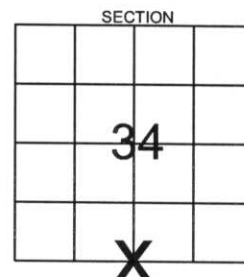
LINCOLN COUNTY COORDINATE: N: 100621.4136

E: 319518.1195

DATE OF SURVEY: August 22, 2006

SURVEY PARTY: Rutzen/Jacobson

FOUND
SET
RE-SET
RE-TIED



Description of monument found at this corner and if was accepted, state all evidence (material, testimonial, occupational, plats, records, other monuments) used as a basis for accepting. If not accepted or if nothing was found, state evidence used as basis for establishing location. If reestablished through lost corner proportionate methods, indicate all monuments, distances and directions used to establish.

BASIS FOR MONUMENT LOCATION:

(DESCRIBE METHOD OF SURVEY AND CONER AUTHENTICATION)

Monument was set based on found Marathon County corners, comparison of original notes, 1923 retracement notes from Marathon County and roadway evidence found in the field.



RECEIVED BY LINCOLN COUNTY
SURVEYOR THIS 29TH DAY
OF September 20 06
Rutzen
COUNTY SURVEYOR

CERTIFIED CORRECT:

Ruben
Ronald Jacobson RLS 2059-008

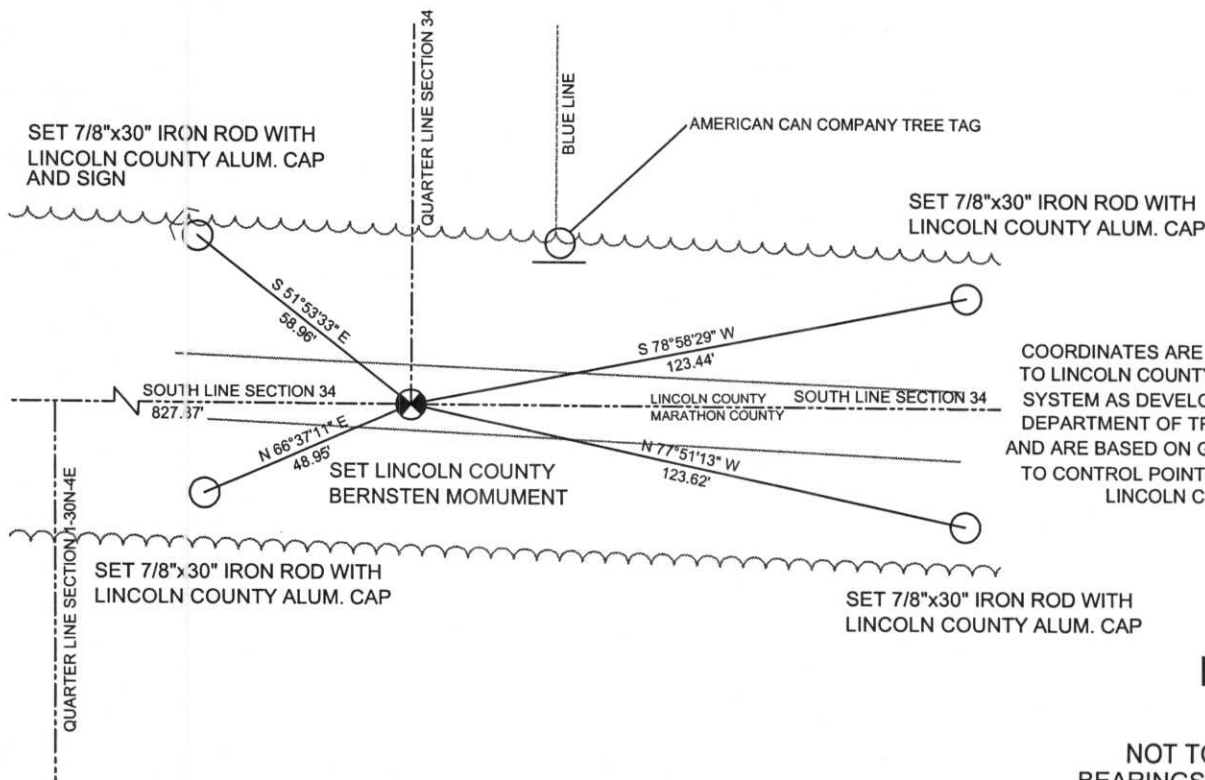
Registered Land Surveyor

DATE: September 18, 2006

COMPANY: Central Wisconsin Engineers & Architects
5707 Schofield Ave.
Weston, Wisconsin 54476
(715) 359-3400

TIE SKETCH:

SHOW MINIMUM OF FOUR (4) HORIZONTAL TIE DISTANCES TO FIXED WITNESS MONUMENTS.
DESCRIBE ALL MONUMENTS FOUND OR SET. ALL DISTANCES SHOWN IN US SURVEY FEET.



COORDINATES ARE REFERENCED TO LINCOLN COUNTY COORDINATE SYSTEM AS DEVELOPED BY THE WI. DEPARTMENT OF TRANSPORTATION AND ARE BASED ON GPS OBSERVATIONS TO CONTROL POINTS AS SUPPLIED BY LINCOLN COUNTY.



NOT TO SCALE
BEARINGS REFERENCED TO LINCOLN COUNTY COORDINATE SYSTEM











190-HPS