

# LINCOLN COUNTY U.S. PUBLIC LAND TIE SHEET RECORD

SECTION 34  
TOWNSHIP 31N  
RANGE 4 E

343146  
NO.

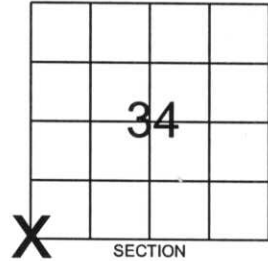
LANDMARK

CORNING  
CITY, VILLAGE, TOWN

CORNER INDENTITY: BERNSTEN MONUMENT

LINCOLN COUNTY COORDINATE: N: 100625.5295  
E: 316874.3984

FOUND   
SET   
RE-SET   
RE-TIED



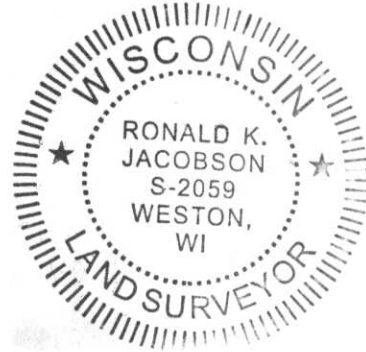
DATE OF SURVEY: August 22, 2006  
SURVEY PARTY: Rutzen/Jacobson

Description of monument found at this corner and if was accepted, state all evidence (material, testimonial, occupational, plats, records, other monuments) used as a basis for accepting. If not accepted or if nothing was found, state evidence used as basis for establishing location. If reestablished through lost corner proportionate methods, indicate all monuments, distances and directions used to establish.

## BASIS FOR MONUMENT LOCATION:

(DESCRIBE METHOD OF SURVEY AND CONER AUTHENTICATION)

Monument was set based on found Marathon County corners, comparison of original notes, 1923 retracement notes from Marathon County and roadway evidence found in the field.



RECEIVED BY LINCOLN COUNTY  
SURVEYOR THIS 29<sup>TH</sup> DAY  
OF September 20, 06  
Rutzy Dall  
COUNTY SURVEYOR

CERTIFIED CORRECT:

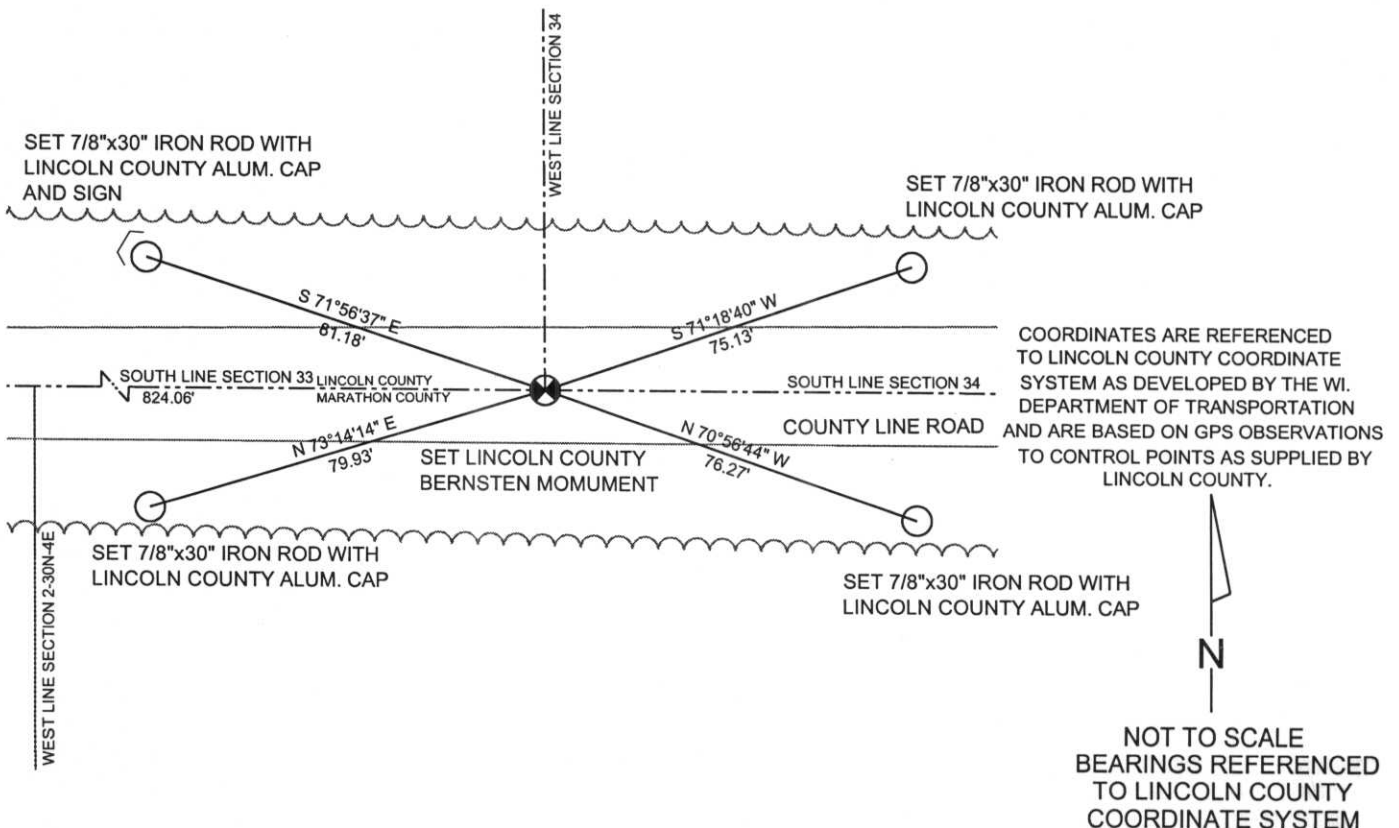
Ronald Jacobson  
Ronald Jacobson RLS 2059-008  
Registered Land Surveyor

COMPANY: Central Wisconsin Engineers & Architects  
5707 Schofield Ave.  
Weston, Wisconsin 54476  
(715) 359-3400

DATE: September 18, 2006

## TIE SKETCH:

SHOW MINIMUM OF FOUR (4) HORIZONTAL TIE DISTANCES TO FIXED WITNESS MONUMENTS.  
DESCRIBE ALL MONUMENTS FOUND OR SET. ALL DISTANCES SHOWN IN US SURVEY FEET.













190-HPS