

**MARATHON COUNTY U.S. PUBLIC LAND  
SURVEY MONUMENT LOCATION RECORD**

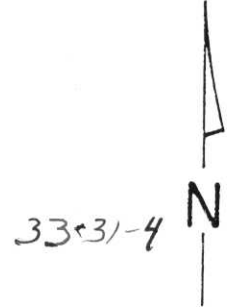
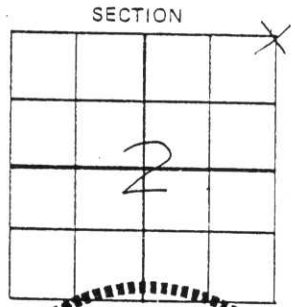
SECTION 2  
TOWNSHIP 30N  
RANGE 4E

11  
NO.

LANDMARK       BENCHMARK      FOUND   
CORNER IDENTITY: NE Cor; 6"x 6" Sandstone      SET   
STATE PLANE COORDINATE: N: WITH SMP SET IN CROSS      RE-SET   
RE-TIED

HALSEY  
CITY, VILLAGE, TOWN

ZONE: \_\_\_\_\_ E: \_\_\_\_\_  
ELEVATION - (FEET): \_\_\_\_\_ DATUM: \_\_\_\_\_  
THETA ANGLE: \_\_\_\_\_ WEATHER: \_\_\_\_\_  
DATE OF SURVEY: 8-14-85 TEMPERATURE: \_\_\_\_\_ °F  
SURVEY PARTY: Nowaczyk, Krueger, Osterbrink

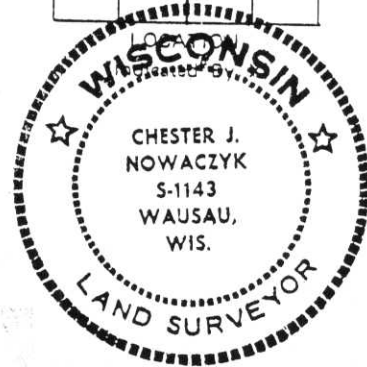


**BASIS FOR MONUMENT LOCATION:**

(DESCRIBE METHOD OF SURVEY AND CORNER AUTHENTICATION)

Dug with backhoe, found top of stone broke off; found base intact. SEAL  
Took ties to base from PK nails in plaques on blazed trees and to iron pipe. Also placed 1" iron pipe on east side of stone for metal detection.

On 7/25/2000 found all tree ties overgrown. Re-dug corner and set SMP in cross. Also added four new ties.



CERTIFIED CORRECT:

*Chester J. Nowaczyk*  
Chester J. Nowaczyk RLS NO. 1143  
Registered Land Surveyor

FIELD BOOK NO. DAY PAGE NO. 62

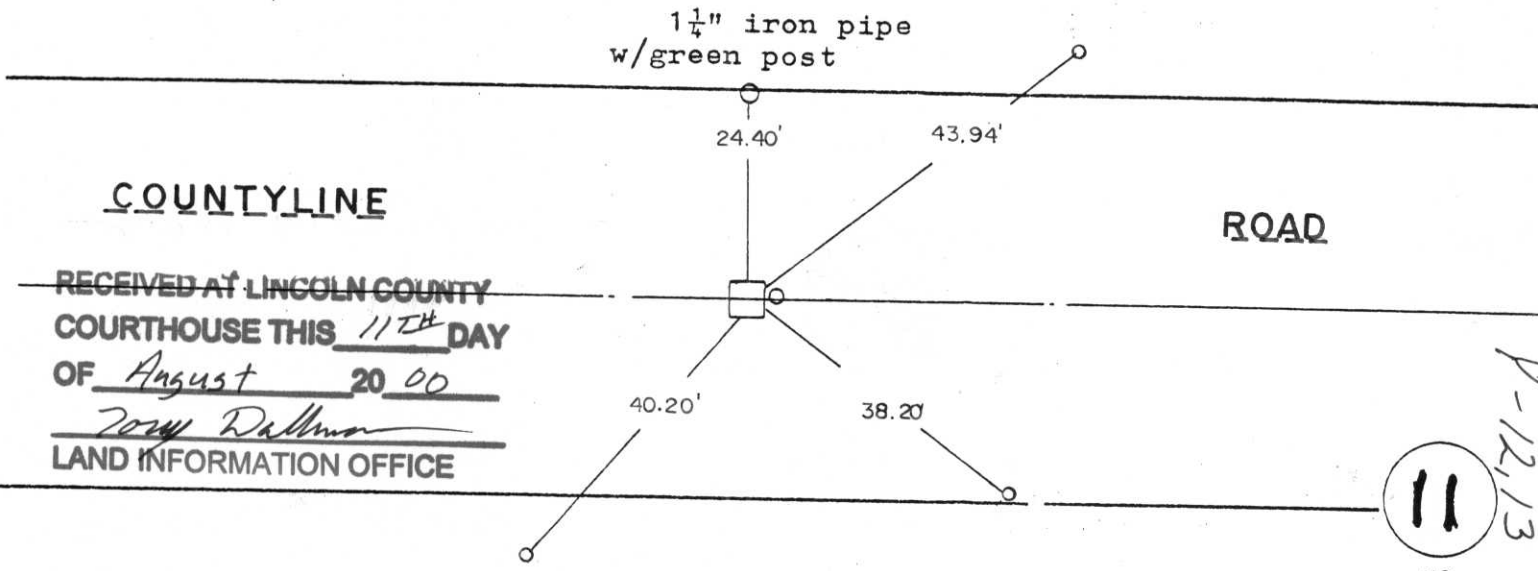
COMPANY SURVEYING SPECIALISTS

DATE: Aug. 15, 1985  
REVISED 7-26-2000 CJN

**TIE SKETCH:**

SHOW MINIMUM OF THREE (3) HORIZONTAL TIE DISTANCES TO FIXED WITNESS MONUMENTS. DESCRIBE ALL MONUMENTS FOUND OR SET. CORRECT ALL DISTANCES SHOWN TO STANDARD TEMPERATURE OF 68° F.

○ DENOTES REBAR WITH CAP AND CHANNEL



RECEIVED AT LINCOLN COUNTY  
COURTHOUSE THIS 11TH DAY  
OF August 20 00  
*2000 Dallman*  
LAND INFORMATION OFFICE

11  
NO.

1-12,13

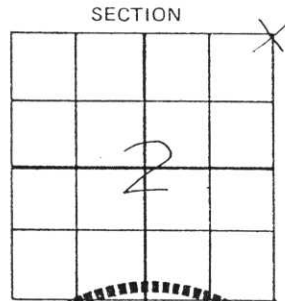
MARATHON COUNTY U.S. PUBLIC LAND  
SURVEY MONUMENT LOCATION RECORD

SECTION 2  
 TOWNSHIP 30N  
 RANGE 4E

11  
 NO.

LANDMARK       BENCHMARK \_\_\_\_\_  
 FOUND  SET   
 CORNER IDENTITY: NE Cor; 6"x 6" Sandstone RE-SET   
 STATE PLANE COORDINATE: N: \_\_\_\_\_ RE-TIED   
 ZONE: \_\_\_\_\_ E: \_\_\_\_\_  
 ELEVATION - (FEET): \_\_\_\_\_ DATUM: \_\_\_\_\_  
 THETA ANGLE: \_\_\_\_\_ WEATHER: \_\_\_\_\_  
 DATE OF SURVEY: 8-14-85 TEMPERATURE: \_\_\_\_\_ °F  
 SURVEY PARTY: Nowaczyk, Krueger, Osterbrink

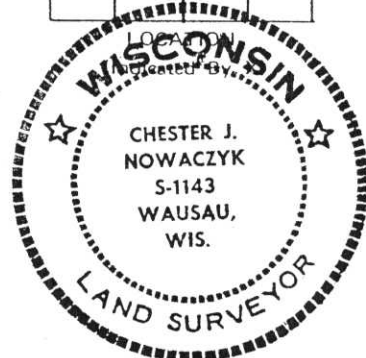
HALSEY  
 CITY, VILLAGE, TOWN



**BASIS FOR MONUMENT LOCATION:**

(DESCRIBE METHOD OF SURVEY AND CORNER AUTHENTICATION)

Dug with backhoe, found top of stone broke off; found base intact. Took ties to base from PK nails in plaques on blazed trees and to iron pipe. Also placed 1" iron pipe on east side of stone for metal detection.



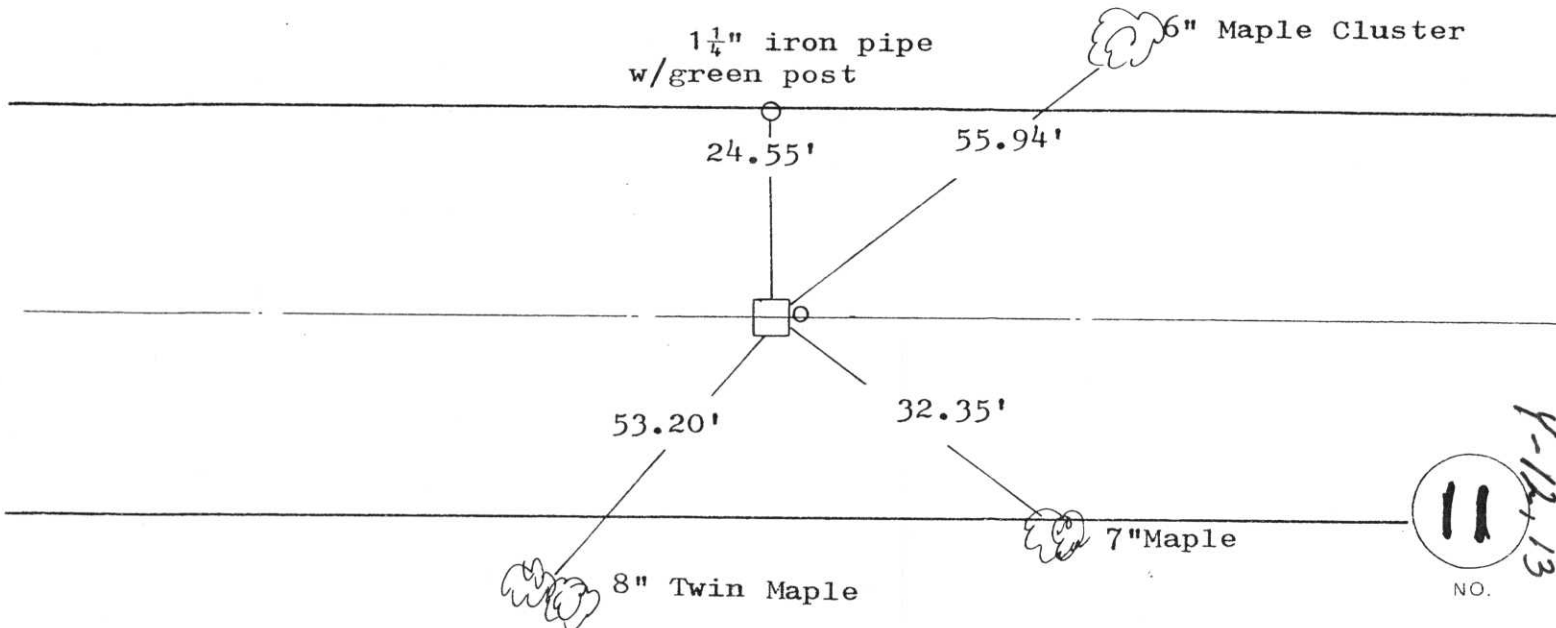
FIELD BOOK NO. DAY PAGE NO. 62  
 COMPANY SURVEYING SPECIALISTS

CERTIFIED CORRECT:

*Chester J. Nowaczyk*  
Chester J. Nowaczyk RLS NO. 1143  
 Registered Land Surveyor  
 DATE: Aug. 15, 1985

**TIE SKETCH:**

SHOW MINIMUM OF THREE (3) HORIZONTAL TIE DISTANCES TO FIXED WITNESS MONUMENTS. DESCRIBE ALL MONUMENTS FOUND OR SET. CORRECT ALL DISTANCES SHOWN TO STANDARD TEMPERATURE OF 68° F.



11  
 NO. 1-12-13