

# LINCOLN COUNTY U.S. PUBLIC LAND TIE SHEET RECORD

SECTION 32  
TOWNSHIP 31N  
RANGE 4 E

323146  
NO.

LANDMARK

CORNING  
CITY, VILLAGE, TOWN

CORNER INDENTITY: FOUND 2" IRON PIPE

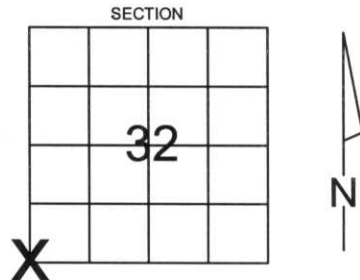
LINCOLN COUNTY COORDINATE: N: 100651.9360

E: 306317.1180

DATE OF SURVEY: September 19, 2006

SURVEY PARTY: Rutzen/Jacobson

FOUND   
SET   
RE-SET   
RE-TIED

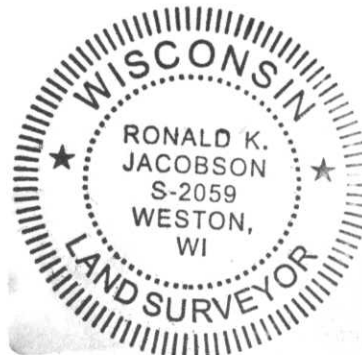


Description of monument found at this corner and if was accepted, state all evidence (material, testimonial, occupational, plats, records, other monuments) used as a basis for accepting. If not accepted or if nothing was found, state evidence used as basis for establishing location. If reestablished through lost corner proportionate methods, indicate all monuments, distances and directions used to establish.

## BASIS FOR MONUMENT LOCATION:

(DESCRIBE METHOD OF SURVEY AND CONER AUTHENTICATION)

Monument was held based on found Marathon County corners, comparison of original notes, 1923 retracement notes from Marathon County and evidence found in the field.



RECEIVED BY LINCOLN COUNTY  
SURVEYOR THIS 29<sup>TH</sup> DAY  
OF September 20 06  
*Jerry Dahl*  
COUNTY SURVEYOR

CERTIFIED CORRECT:

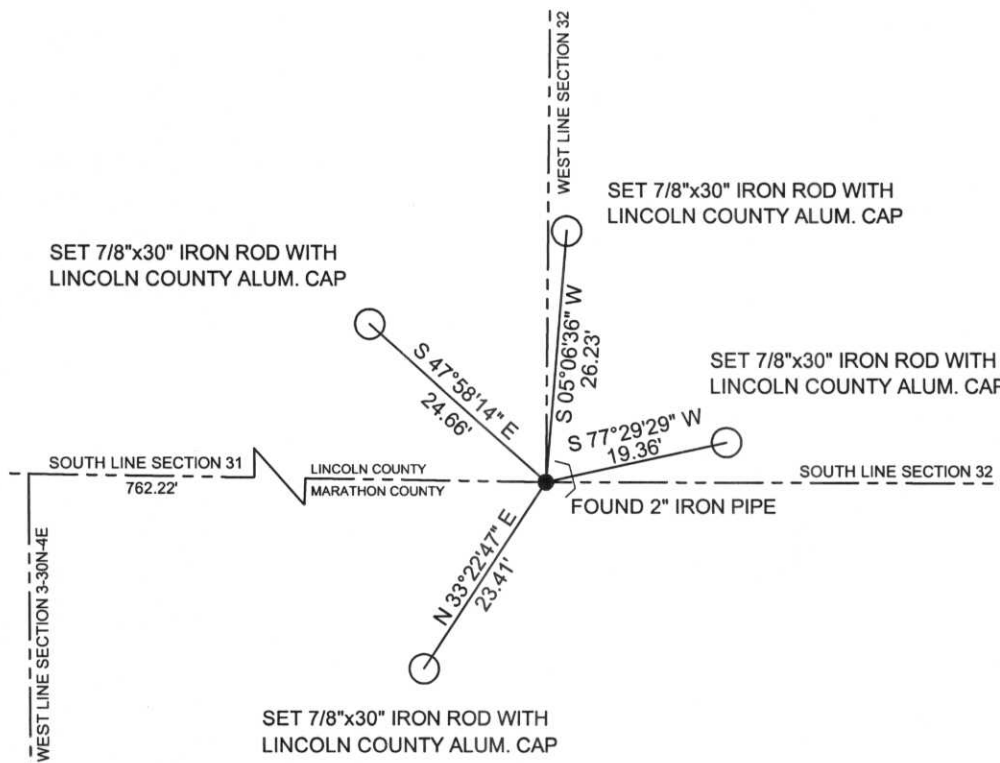
*Ronald Jacobson*  
Ronald Jacobson RLS 2059-008  
Registered Land Surveyor

COMPANY: Central Wisconsin Engineers & Architects  
5707 Schofield Ave.  
Weston, Wisconsin 54476  
(715) 359-3400

DATE: September 26, 2006

## TIE SKETCH:

SHOW MINIMUM OF FOUR (4) HORIZONTAL TIE DISTANCES TO FIXED WITNESS MONUMENTS.  
DESCRIBE ALL MONUMENTS FOUND OR SET. ALL DISTANCES SHOWN IN US SURVEY FEET.



COORDINATES ARE REFERENCED TO LINCOLN COUNTY COORDINATE SYSTEM AS DEVELOPED BY THE WI. DEPARTMENT OF TRANSPORTATION AND ARE BASED ON GPS OBSERVATIONS TO CONTROL POINTS AS SUPPLIED BY LINCOLN COUNTY.

NOT TO SCALE  
BEARINGS REFERENCED TO LINCOLN COUNTY COORDINATE SYSTEM



WARNING  
PLEASE CONTACT  
THE COUNTY  
ENGINEERING  
OFFICE









PLEASE  
DO NOT  
DISTURB  
NEARBY

S M  
U A  
R R  
V K

