

U.S. PUBLIC LAND SURVEY MONUMENT RECORD

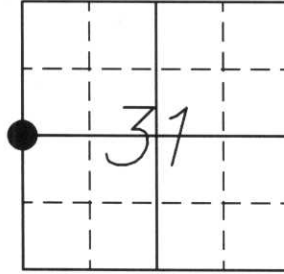
Note: This form is intended and designed to fulfill all requirements of Wisconsin Administrative Code, Chapter A-E 5.02, U.S. Public Land Survey Monument Record (3) (a) (b) (c) (d) (e) (f) (g) (h) (i). An additional sheet may be added if necessary to conform with said requirements.

(a) Corner location: Township 31 North

Range 5 East

Town/City/Village CORNING

County LINCOLN



Section 31

(b) (f) (g) (h) Description of monument found at this corner and if it was accepted, state all evidence (material, testimonial, accupational, plats, records, other monument(s) used as a basis for accepting. If not accepted or if nothing was found, state evidence used as a basis for establishing location. If reestablished through last corner proportionate methods, indicate all monuments, distances and directions used to establish.

History of original corner established:

Original Survey July, 1851 by J. M. Marsh

Original corner witnessed by:

12" Hemlock, S10°W, 35 links

13" Sugar Maple, N10°W, 46 links

14" Hemlock, N70°E, 26 links

24" Sugar Maple, S44°E, 23 links

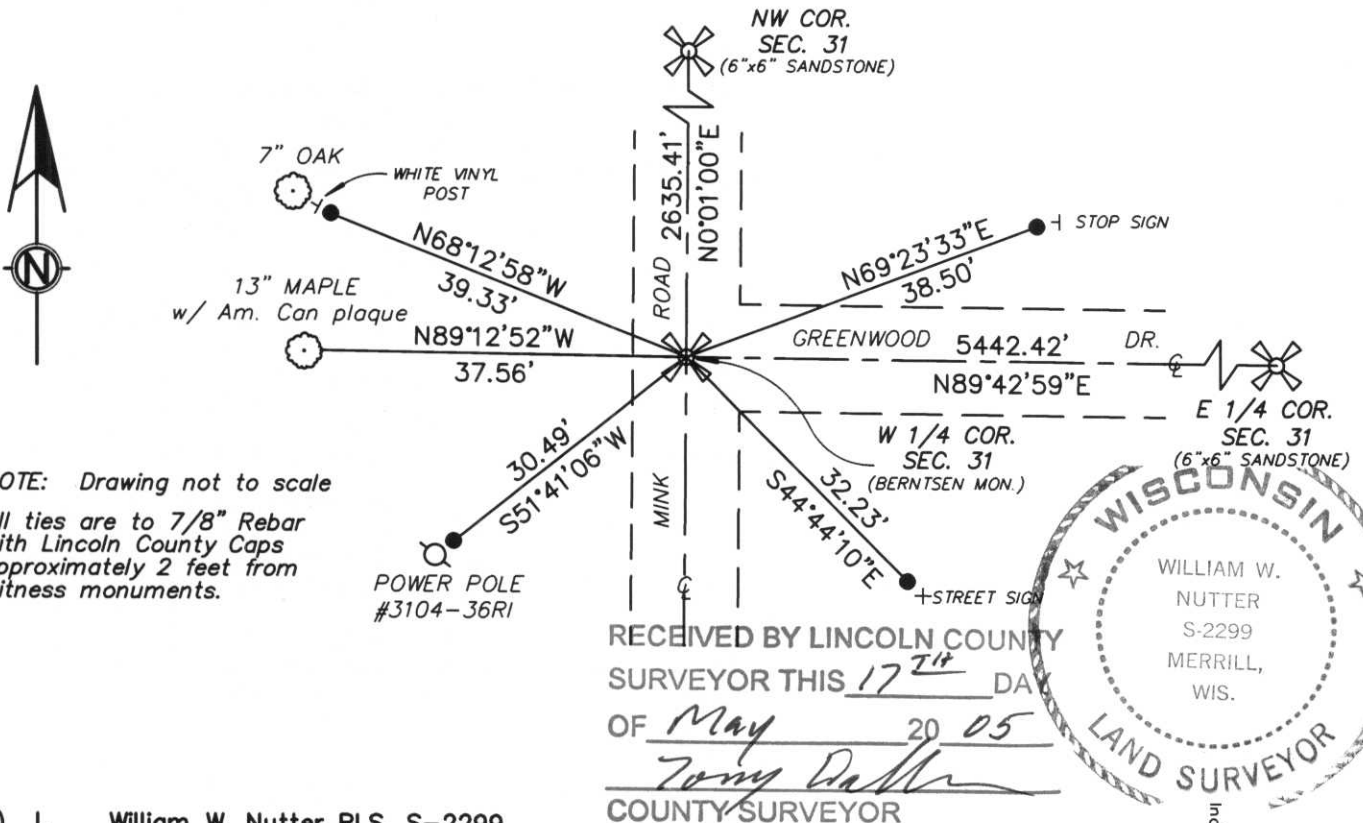
Corner was revisited sometime by American Can Corporation as witnessed by American Can plaque on tree.

Description of corner evidence found:

We found a Berntsen Monument approx. 8" below the surface of the road at the intersection of centerlines of Mink Road & Greendale Drive.

We accepted this position and tied to 7/8" Rebar with Lincoln County Caps.

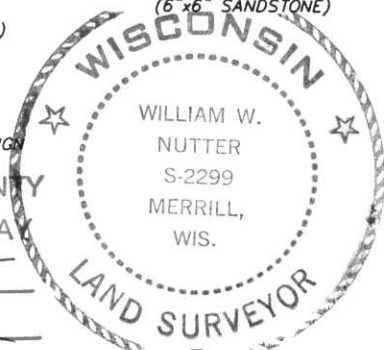
(c) (d) (e) Plan view of corner with ties to at least 4 witness monuments. If in disagreement with previous established corner, show the distance between the two corners and also indicate the ties to the disputed corner.



NOTE: Drawing not to scale

- All ties are to 7/8" Rebar with Lincoln County Caps approximately 2 feet from witness monuments.

RECEIVED BY LINCOLN COUNTY SURVEYOR THIS 17TH DAY OF May 20 05
Tommy Diller
 COUNTY SURVEYOR



(I) I, William W. Nutter RLS, S-2299

(type or print name) certify that the corner location on this record was determined by me or under my direction and control and that this U.S. Public Land Survey Monument Record is correct and complete to the best of my knowledge and belief.

William W. Nutter, RLS - 2299
 Signature

4-29-2005
 Date