

LINCOLN COUNTY U.S. PUBLIC LAND TIE SHEET RECORD

SECTION 33
TOWNSHIP 31N
RANGE 4 E

333144
NO.

LANDMARK

CORNING
CITY, VILLAGE, TOWN

CORNER INDENTITY: BERNSTEN MONUMENT

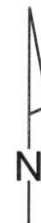
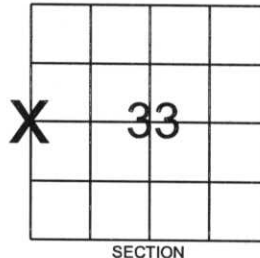
LINCOLN COUNTY COORDINATE: N: 103381.2059

E: 311759.7912

DATE OF SURVEY: October 10, 2006

SURVEY PARTY: Rutzen/Dahlvig

FOUND
SET
RE-SET
RE-TIED



Description of monument found at this corner and if was accepted, state all evidence (material, testimonial, occupational, plats, records, other monuments) used as a basis for accepting. If not accepted or if nothing was found, state evidence used as basis for establishing location. If reestablished through lost corner proportionate methods, indicate all monuments, distances and directions used to establish.

BASIS FOR MONUMENT LOCATION:

(DESCRIBE METHOD OF SURVEY AND CORNER AUTHENTICATION)

Monument was set based on single proportionate measurement between the established corners at the Northwest corner of Section 33 and the Southwest corner of Section 33.



CERTIFIED CORRECT:

Ronald K. Jacobson

Ronald Jacobson RLS 2059-008

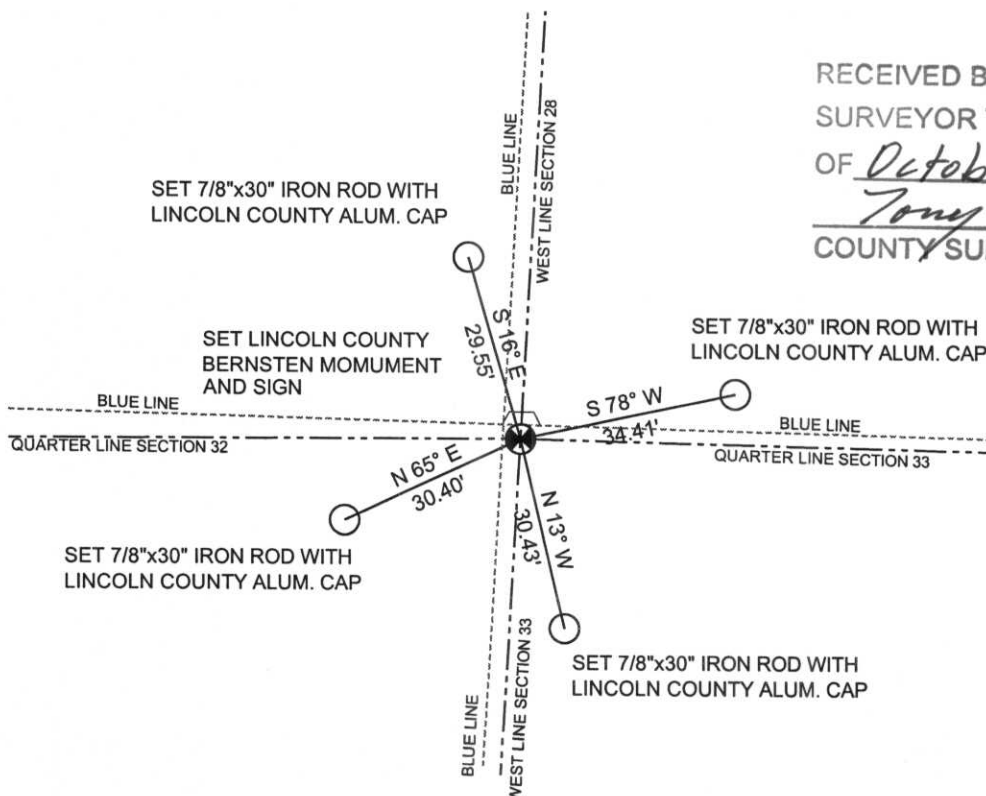
Registered Land Surveyor

DATE: October 18, 2006

COMPANY: Central Wisconsin Engineers & Architects
5707 Schofield Ave.
Weston, Wisconsin 54476
(715) 359-9400

TIE SKETCH:

SHOW MINIMUM OF FOUR (4) HORIZONTAL TIE DISTANCES TO FIXED WITNESS MONUMENTS.
DESCRIBE ALL MONUMENTS FOUND OR SET. ALL DISTANCES SHOWN IN US SURVEY FEET.



RECEIVED BY LINCOLN COUNTY
SURVEYOR THIS 23RD DAY
OF October 20 06
Tony Dahn
COUNTY SURVEYOR

COORDINATES ARE REFERENCED TO LINCOLN COUNTY COORDINATE SYSTEM AS DEVELOPED BY THE WI. DEPARTMENT OF TRANSPORTATION AND ARE BASED ON GPS OBSERVATIONS TO CONTROL POINTS AS SUPPLIED BY LINCOLN COUNTY.

NOT TO SCALE
BEARINGS REFERENCED
MAGNETIC NORTH



LIBERTY
IN GOD WE TRUST
ONE DIME
1963







