

U. S. PUBLIC CERTIFIED LAND CORNER RESTORATION

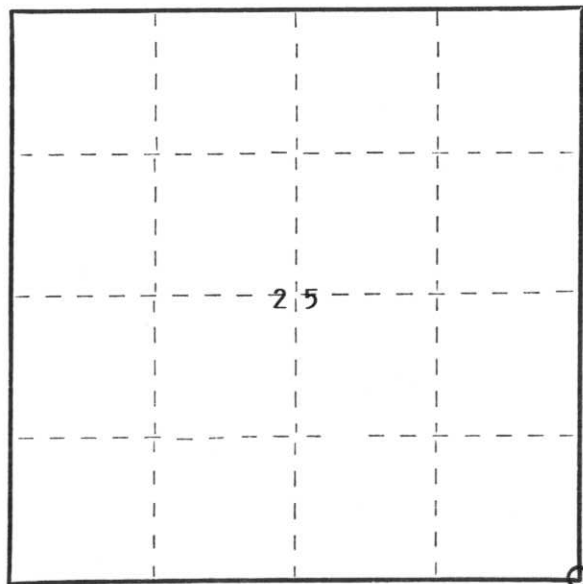
Index No. 4-25

State of Wisconsin }  
County of Lincoln } ss.

I Edwin R. Abendroth, do hereby certify that on the 8th day of June, 1994, I found evidence of the SE corner corner of Section 25 Township 31, North, Range 4 East, Fourth Principal Meridian, as described hereon; and that from this evidence I established a new monument and accessories as described hereon to perpetuate the original location of this corner.

Resident witnesses:

.....  
.....  
.....



○ = Corner monument restored.

History of original corner establishment:

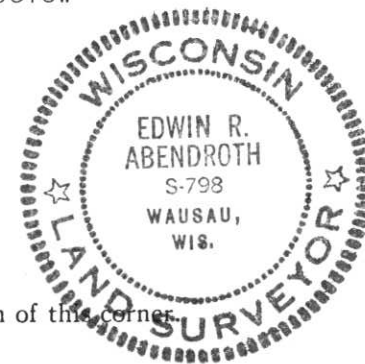
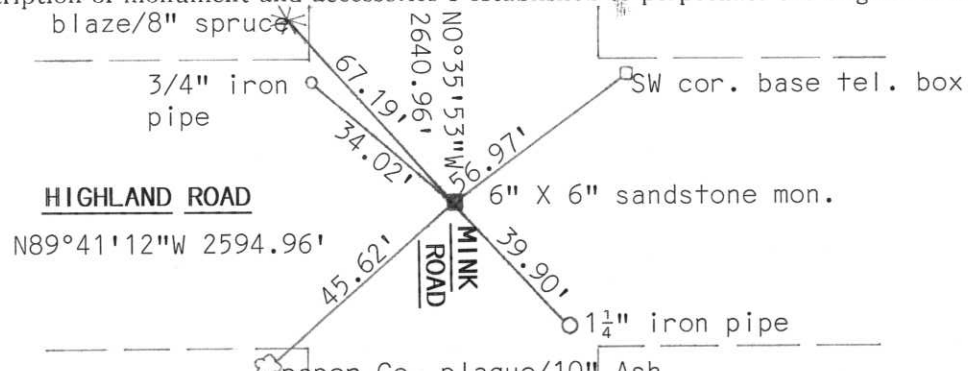
Original survey established wood post on corner

Wood post replaced post with stone monument.

Description of corner evidence found:

Excavated with backhoe and found 6" X 6" sandstone monument 6" below grade. Stone in good condition accepted same as located.

Description of monument and accessories I established to perpetuate the original location of the corner



Dated at Wausau, Wis., this 9th day of August, 1994

Signature Edwin R. Abendroth Surveyor Registration No S-798  
(County Surveyor, Registered Land Surveyor, or other duly authorized official)

Office of Register of Deeds, County of Lincoln, I hereby certify that the within instrument was filed in this office for record on the ..... day of ..... 19..... at ..... o'clock ..... M.

.....  
(Register of Deeds)  
By..... Deputy





