

# U.S. PUBLIC LAND SURVEY MONUMENT RECORD

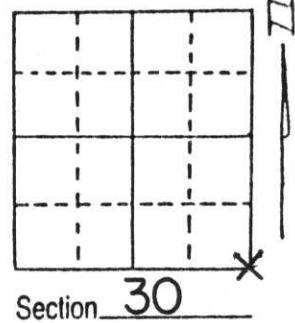
Note: This form is intended and designed to fulfill all requirements of Wisconsin Administrative Code, Chapter A-E 5.02, U.S. Public Land Survey Monument Record (3) (a) (b) (c) (d) (e) (f) (g) (h) (i). An additional sheet may be added if necessary to conform with said requirements.

(a) Corner location: Township 31 North

Range 4 East

Town/City/Village CORNING

County LINCOLN

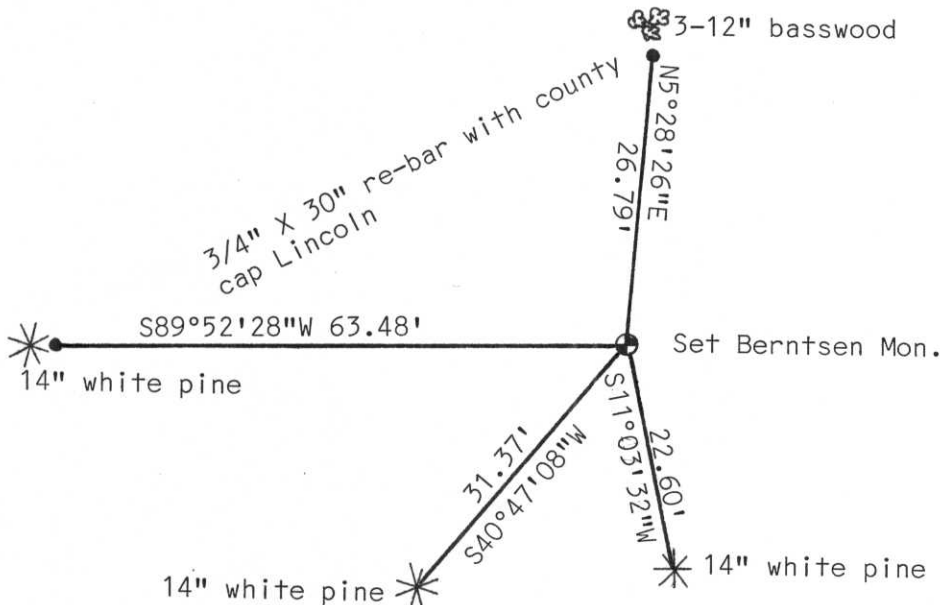


(b) (f) (g) (h) Description of monument found at this corner and if it was accepted, state all evidence (material, testimonial, occupational, plats, records, other monuments) used as a basis for accepting. If not accepted or if nothing was found, state evidence used as basis for establishing location. If reestablished through lost corner proportionate methods, indicate all monuments, distances and directions used to establish.

Traversed to corner location and searched area. Found no evidence other than blue paint marks set by forestry dept. Single proportioned corner location from SE corner Sec. 29 and south  $\frac{1}{4}$  corner Section 30. Distance to NE corner calculated long, but all distances in this Section were long. Accepted location and tied same.

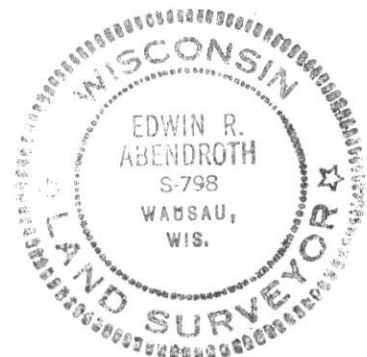
**RECEIVED AT LINCOLN COUNTY  
COURTHOUSE THIS 2nd DAY  
OF Dec. 19 97  
Pat Pribe  
TAX DESCRIPTION OFFICE**

(c) (d) (e) Plan view of corner with ties to at least 4 witness monuments. If in disagreement with previously established corner, show the distances between the two corners and also indicate the ties to the disputed corner.



(i) I, Edwin R. Abendroth RLS No. S-798  
(type or print name) certify that the corner location on this record was determined by me or under my direction and control and that this U.S. Public Land Survey Monument Record is correct and complete to the best of my knowledge and belief.

Edwin Abendroth December 1, 1997  
Signature Date



Index No. 4-5