

U. S. PUBLIC CERTIFIED LAND CORNER RESTORATION

Index No. S-25

State of Wisconsin }  
 County of Lincoln } ss.

I Edwin R. Abendroth, do hereby certify that on the 8th day of June, 1994, I found evidence of the East 1/4 corner of Section 25 Township 31, North, Range 4, Fourth Principal Meridian, as described hereon; and that from this evidence I established a new monument and accessories as described hereon to perpetuate the original location of this corner.

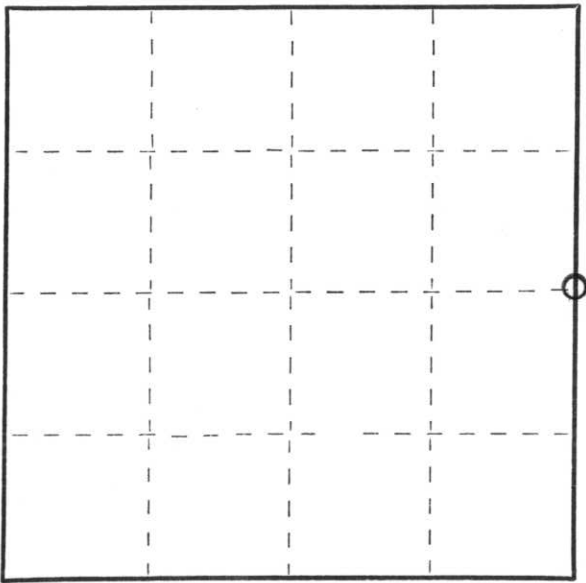
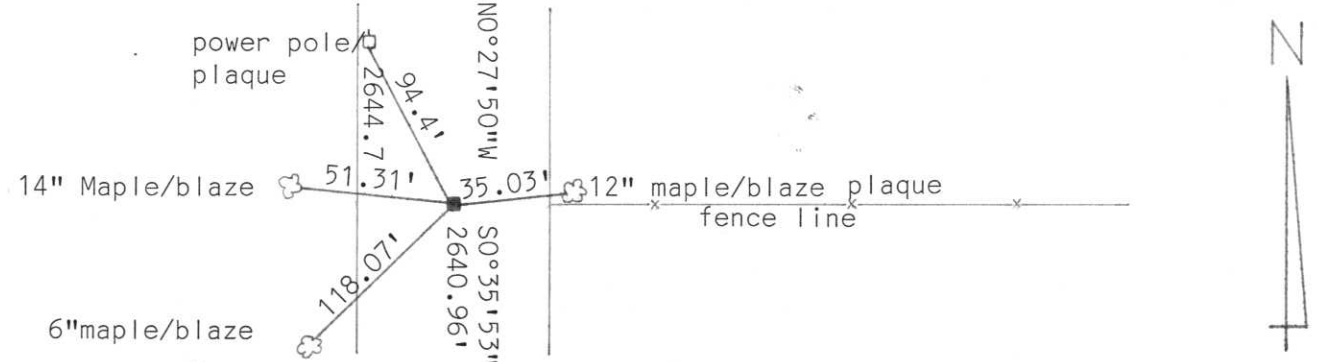
Resident witnesses:  
 \_\_\_\_\_  
 \_\_\_\_\_  
 \_\_\_\_\_

History of original corner establishment:  
 Original survey set wood post on corner  
 Replaced wood post with stone monument

Description of corner evidence found:  
 Found sandstone monument by excavating with backhoe. Stone was tipped. Straightened stone and accepted in present location.



Description of monument and accessories I established to perpetuate the original location of this corner.



○ = Corner monument restored.

Dated at Wausau, Wis., this 8th day of June, 1994

Signature Edwin R. Abendroth Title Surveyor Registration No. S-798  
 (County Surveyor, Registered Land Surveyor, or other duly authorized official)

Office of Register of Deeds, County of \_\_\_\_\_, I hereby certify that the within instrument was filed in this office for record on the \_\_\_\_\_ day of \_\_\_\_\_, 19\_\_\_\_ at \_\_\_\_\_ o'clock \_\_\_\_\_ M.

\_\_\_\_\_  
 (Register of Deeds)

By \_\_\_\_\_ Deputy

FORM 985 H. C. MILLER CO., MILWAUKEE





