

LINCOLN COUNTY U.S. PUBLIC LAND TIE SHEET RECORD

SECTION 26
TOWNSHIP 31N
RANGE 4 E

263144
NO.

LANDMARK

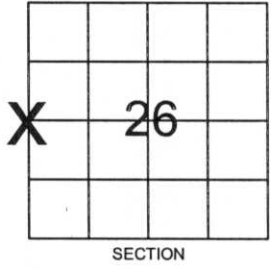
CORNING
CITY, VILLAGE, TOWN

CORNER INDENTITY: BERNSTEN MONUMENT

LINCOLN COUNTY COORDINATE: N: 108593.9961
E: 322374.0523

DATE OF SURVEY: October 18, 2006
SURVEY PARTY: Rutzen/Jacobson

FOUND
SET
RE-SET
RE-TIED



Description of monument found at this corner and if was accepted, state all evidence (material, testimonial, occupational, plats, records, other monuments) used as a basis for accepting. If not accepted or if nothing was found, state evidence used as basis for establishing location. If reestablished through lost corner proportionate methods, indicate all monuments, distances and directions used to establish.

BASIS FOR MONUMENT LOCATION:

(DESCRIBE METHOD OF SURVEY AND CORNER AUTHENTICATION)

Monument was set based on tree tagged as the corner, parcel line evidence, and comparison to original notes. Tree tagged as the corner was held.



CERTIFIED CORRECT:

Ronald Jacobson

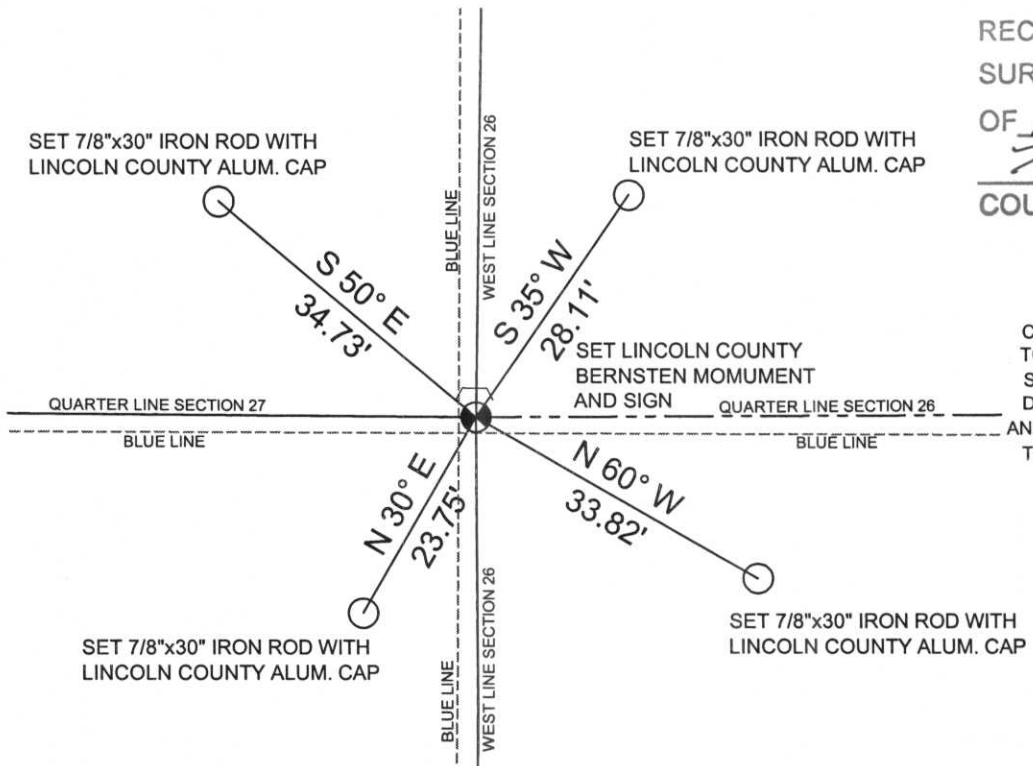
Ronald Jacobson RLS 2059-008
Registered Land Surveyor

DATE: November 3, 2006

COMPANY: Central Wisconsin Engineers & Architects
5707 Schofield Ave.
Weston, Wisconsin 54476
(715) 359-9400

TIE SKETCH:

SHOW MINIMUM OF FOUR (4) HORIZONTAL TIE DISTANCES TO FIXED WITNESS MONUMENTS.
DESCRIBE ALL MONUMENTS FOUND OR SET. ALL DISTANCES SHOWN IN US SURVEY FEET.



RECEIVED BY LINCOLN COUNTY
SURVEYOR THIS 8TH DAY
OF November 20 06
Tony Dahl
COUNTY SURVEYOR

COORDINATES ARE REFERENCED TO LINCOLN COUNTY COORDINATE SYSTEM AS DEVELOPED BY THE WI. DEPARTMENT OF TRANSPORTATION AND ARE BASED ON GPS OBSERVATIONS TO CONTROL POINTS AS SUPPLIED BY LINCOLN COUNTY.

NOT TO SCALE
BEARINGS REFERENCED TO MAGNETIC NORTH













Pink ribbon marking on a tree trunk.

Pink ribbon marking on a tree trunk.

Pink ribbon marking on a tree trunk.

Pink ribbon marking on a tree trunk.

Survey marker with yellow label. The label contains the following text:
S
U
A
R
R
V
E
Y
R

Pink ribbon marking on a tree trunk.

