

# U.S. PUBLIC LAND SURVEY MONUMENT RECORD

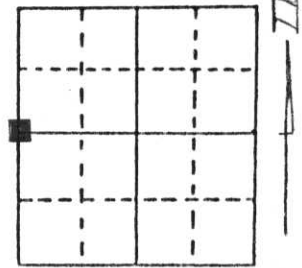
Note: This form is intended and designed to fulfill all requirements of Wisconsin Administrative Code, Chapter A-E 5.02, U.S. Public Land Survey Monument Record (3) (a) (b) (c) (d) (e) (f) (g) (h) (i). An additional sheet may be added if necessary to conform with said requirements.

(a) Corner location: Township 31 North

Range 4 East

Town/City/Village CORNING

County LINCOLN



Section 30

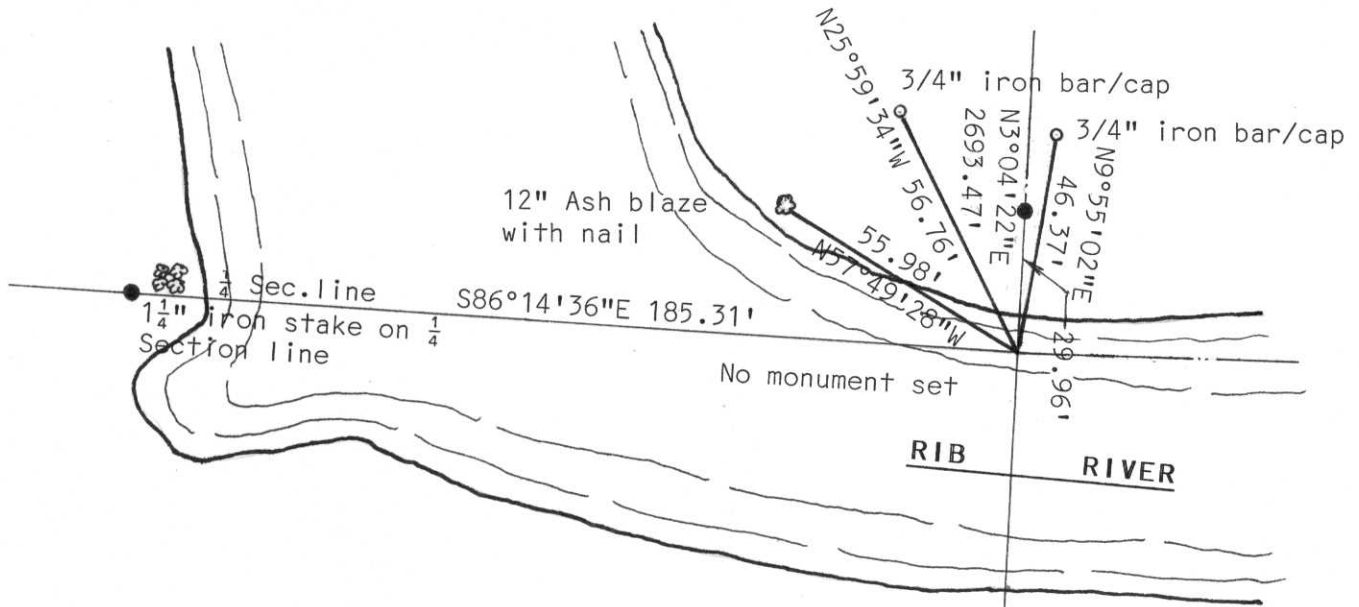
(b) (f) (g) (h) Description of monument found at this corner and if it was accepted, state all evidence (material, testimonial, occupational, plats, records, other monuments) used as a basis for accepting. If not accepted or if nothing was found, state evidence used as basis for establishing location. If reestablished through lost corner proportionate methods, indicate all monuments, distances and directions used to establish.

Traversed east from west  $\frac{1}{4}$  corner Sec. 25-31-3 Taylor County, found  $\frac{1}{4}$ " iron pipe just west of Rib River. Iron pipe called for in survey by C.A. Claussen, May 25-26, 1946. Held iron pipe and used a proportionate distance to establish corner.

Land owner (Perrodin) said the corner was a cross on boulder in River he had heard. We checked all the boulders in corner area found no evidence of cross on any of the boulders. Corner did fall in River and no monument was set at corner but point was tied as follows.

RECEIVED AT LINCOLN COUNTY  
COURTHOUSE THIS 22nd DAY  
OF Dec. 19 97  
Pat Pruebe  
TAX DESCRIPTION OFFICE

(c) (d) (e) Plan view of corner with ties to at least 4 witness monuments. If in disagreement with previously established corner, show the distances between the two corners and also indicate the ties to the disputed corner.



(i) I, Edwin R. Abendroth RLS No. S-798  
(type or print name) certify that the corner location on this record was determined by me or under my direction and control and that this U.S. Public Land Survey Monument Record is correct and complete to the best of my knowledge and belief.

Edwin Abendroth December 5, 1997  
Signature Date



Index No. 5-1