

# U.S. PUBLIC LAND SURVEY MONUMENT RECORD

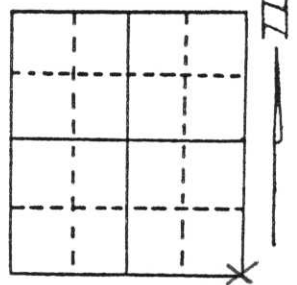
Note: This form is intended and designed to fulfill all requirements of Wisconsin Administrative Code, Chapter A-E 5.02, U.S. Public Land Survey Monument Record (3) (a) (b) (c) (d) (e) (f) (g) (h) (i). An additional sheet may be added if necessary to conform with said requirements.

(a) Corner location: Township 31 North

Range 4 East

Town/City/Village CORNING

County LINCOLN



Section 24

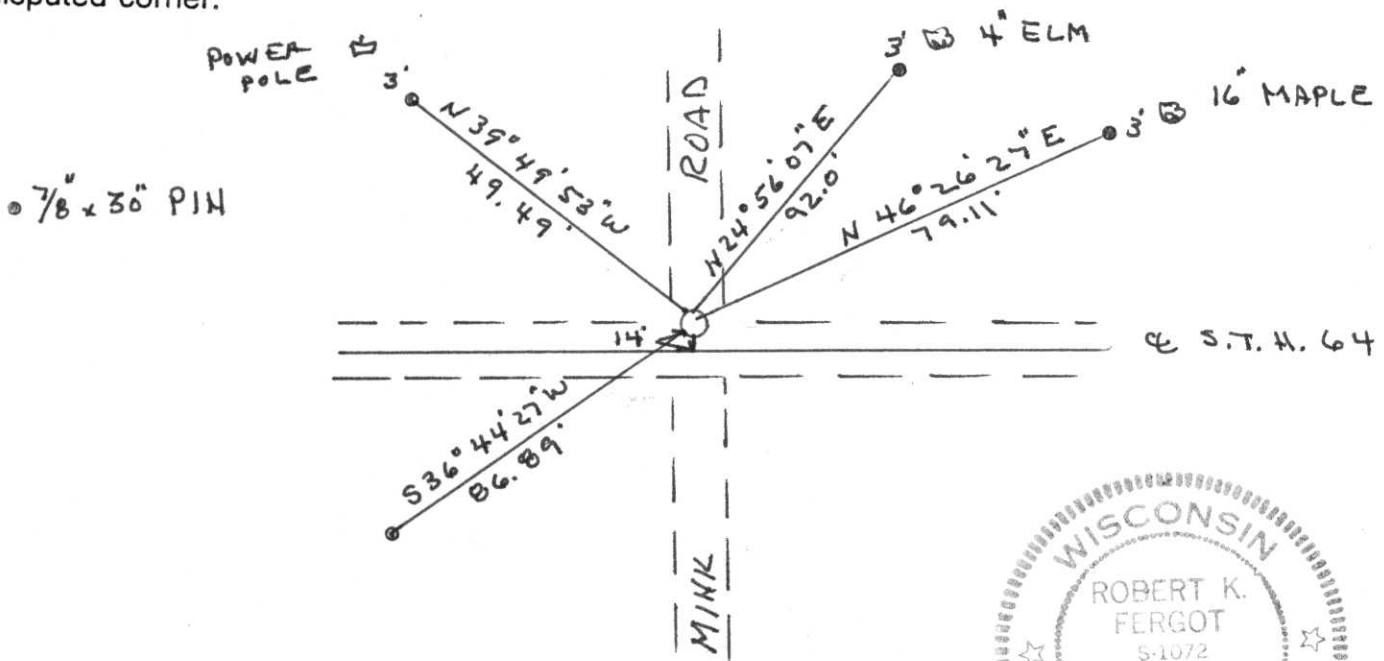
(b) (f) (g) (h) Description of monument found at this corner and if it was accepted, state all evidence (material, testimonial, occupational, plats, records, other monuments) used as a basis for accepting. If not accepted or if nothing was found, state evidence used as basis for establishing location. If reestablished through lost corner proportionate methods, indicate all monuments, distances and directions used to establish.

No evidence of monument found. Likely destroyed when S.T.H. 64 was reconstructed in 1954.

Set Berntsen Monument at intersection of Mink Road north and south an 14 feet north of centerline of S.T.H. 64 as shown on right-of-plat dated 1954.

RECEIVED AT LINCOLN COUNTY  
 COURTHOUSE THIS 1st DAY  
 OF May 1998  
 Tax Description Office

(c) (d) (e) Plan view of corner with ties to at least 4 witness monuments. If in disagreement with previously established corner, show the distances between the two corners and also indicate the ties to the disputed corner.



(i) I, Robert K. Fergot  
 (type or print name) certify that the corner location on this record was determined by me or under my direction and control and that this U.S. Public Land Survey Monument Record is correct and complete to the best of my knowledge and belief.

Robert K. Fergot Signature      April 28, 1988 Date

Index No. Q-25





31 3:06 PM





31 3:05 PM





31 3:07 PM





31 3:07 PM





31 3:08 PM