

U.S. PUBLIC LAND SURVEY MONUMENT RECORD

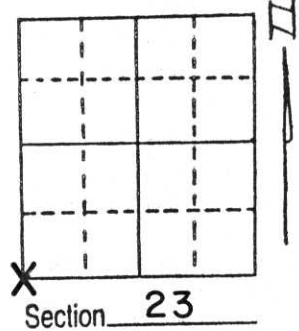
Note: This form is intended and designed to fulfill all requirements of Wisconsin Administrative Code, Chapter A-E 5.02, U.S. Public Land Survey Monument Record (3) (a) (b) (c) (d) (e) (f) (g) (h) (i). An additional sheet may be added if necessary to conform with said requirements.

(a) Corner location: Township 31 North

Range 4 East

Town/City/Village CORNING

County LINCOLN

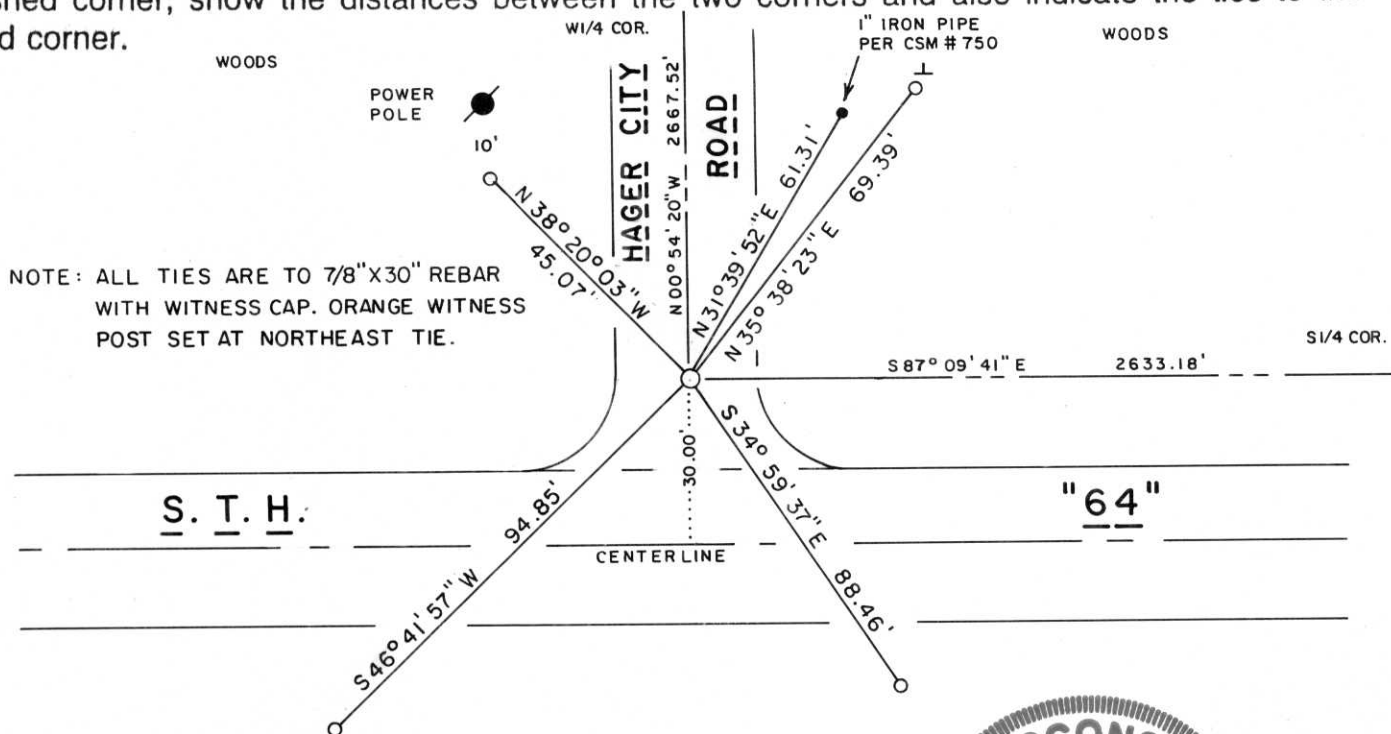


(b) (f) (g) (h) Description of monument found at this corner and if it was accepted, state all evidence (material, testimonial, occupational, plats, records, other monuments) used as a basis for accepting. If not accepted or if nothing was found, state evidence used as basis for establishing location. If reestablished through lost corner proportionate methods, indicate all monuments, distances and directions used to establish.

Original Corner- Wood Post set by W.E. Daugherty, 1851?. No remonumentation notes available.

Corner area had been searched and excavated for by crews from Owen Ayres & Associates in 1979. No corner evidence was recovered and corner point was established at that time by reliance on the S.T.H. "64" R/W plat and by running a traverse of Sections 25 and 26. RR Spikes were set as reference points in the centerline of S.T.H. "64" at that time and were recovered intact in April, 1995. Corner point position was reestablished from these reference monuments and a Standard Lincoln County Berntsen Monument placed at corner. Top of monument is about 6 inches below roadway surface of Hager City Road. Filed a section summary sheet of Section 23 with County Surveyor's Office.

(c) (d) (e) Plan view of corner with ties to at least 4 witness monuments. If in disagreement with previously established corner, show the distances between the two corners and also indicate the ties to the disputed corner.



NOTE: ALL TIES ARE TO 7/8"X30" REBAR WITH WITNESS CAP. ORANGE WITNESS POST SET AT NORTHEAST TIE.

(i) I, LAVERNE H. MOSHER
 (type or print name) certify that the corner location on this record was determined by me or under my direction and control and that this U.S. Public Land Survey Monument Record is correct and complete to the best of my knowledge and belief.

Laverne H. Mosher
 Signature

MAY 24, 1995
 Date

RECEIVED AT LINCOLN COUNTY
 COURT HOUSE THIS 25 DAY
 of May 1995

Pat [Signature]
 COUNTY SURVEYOR

Index No. 217