

LINCOLN COUNTY U.S. PUBLIC LAND TIE SHEET RECORD

SECTION 27
TOWNSHIP 31N
RANGE 4 E

273142
NO.

LANDMARK

CORNING
CITY, VILLAGE, TOWN

CORNER INDENTITY: BERNSTEN MONUMENT

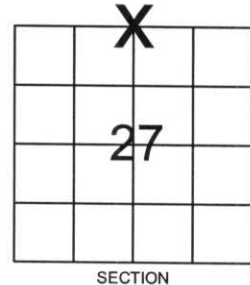
LINCOLN COUNTY COORDINATE: N: 111730.2988

E: 319797.9260

DATE OF SURVEY: August 22, 2006

SURVEY PARTY: Rutzen

FOUND
SET
RE-SET
RE-TIED



Description of monument found at this corner and if was accepted, state all evidence (material, testimonial, occupational, plats, records, other monuments) used as a basis for accepting. If not accepted or if nothing was found, state evidence used as basis for establishing location. If reestablished through lost corner proportionate methods, indicate all monuments, distances and directions used to establish.

BASIS FOR MONUMENT LOCATION:

(DESCRIBE METHOD OF SURVEY AND CONER AUTHENTICATION)

Monument was set based on STH 64 Right-Of-Way and roadway evidence found in the field.



RECEIVED BY LINCOLN COUNTY
SURVEYOR THIS 29TH DAY
OF September 20 06
Tommy Ball
COUNTY SURVEYOR

CERTIFIED CORRECT:

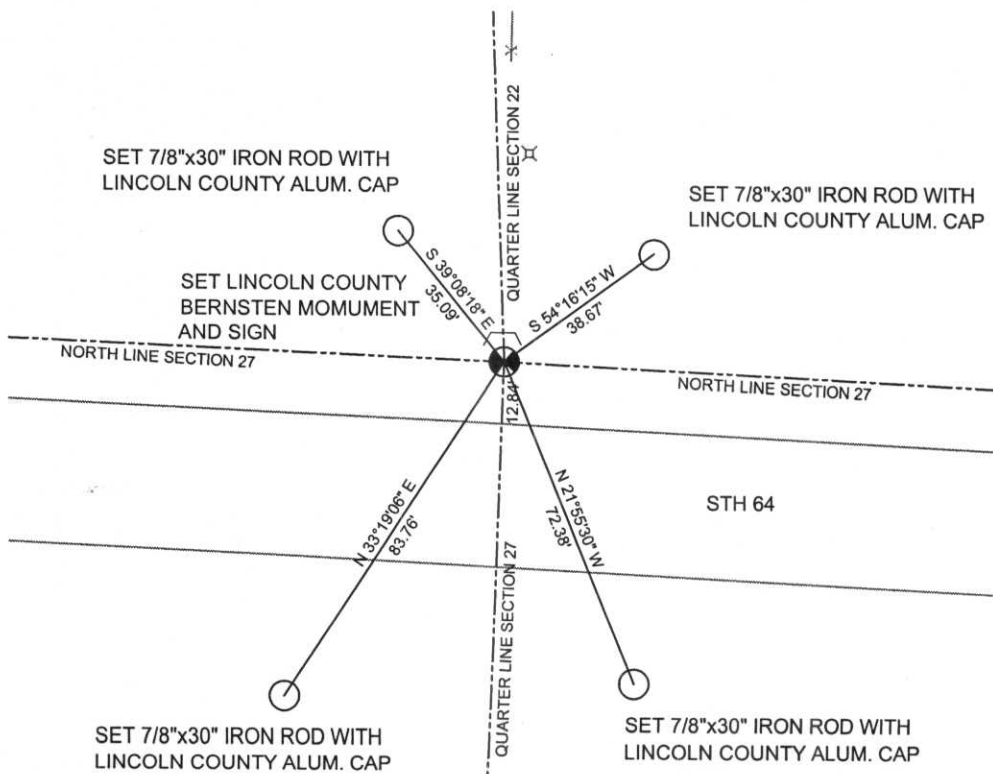
Ronald Jacobson
Ronald Jacobson RLS 2059-008
Registered Land Surveyor

COMPANY: Central Wisconsin Engineers & Architects
5707 Schofield Ave.
Weston, Wisconsin 54476
(715) 359-3400

DATE: September 26, 2006

TIE SKETCH:

SHOW MINIMUM OF FOUR (4) HORIZONTAL TIE DISTANCES TO FIXED WITNESS MONUMENTS.
DESCRIBE ALL MONUMENTS FOUND OR SET. ALL DISTANCES SHOWN IN US SURVEY FEET.



COORDINATES ARE REFERENCED TO LINCOLN COUNTY COORDINATE SYSTEM AS DEVELOPED BY THE WI. DEPARTMENT OF TRANSPORTATION AND ARE BASED ON GPS OBSERVATIONS TO CONTROL POINTS AS SUPPLIED BY LINCOLN COUNTY.



NOT TO SCALE
BEARINGS REFERENCED TO LINCOLN COUNTY COORDINATE SYSTEM







SURVEY
MARKER





107 Schofield Ave.
Weston, WI 54478
www.cwengineers.com

100

CHEVROLET

Z71

715-275-2400