

U.S. PUBLIC LAND SURVEY MONUMENT RECORD

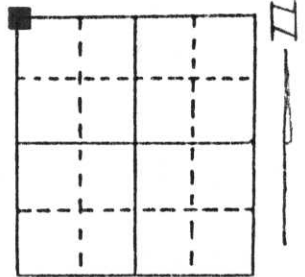
Note: This form is intended and designed to fulfill all requirements of Wisconsin Administrative Code, Chapter A-E 5.02, U.S. Public Land Survey Monument Record (3) (a) (b) (c) (d) (e) (f) (g) (h) (i). An additional sheet may be added if necessary to conform with said requirements.

(a) Corner location: Township 31 North

Range 4 East

Town/City/Village CORNING

County LINCOLN



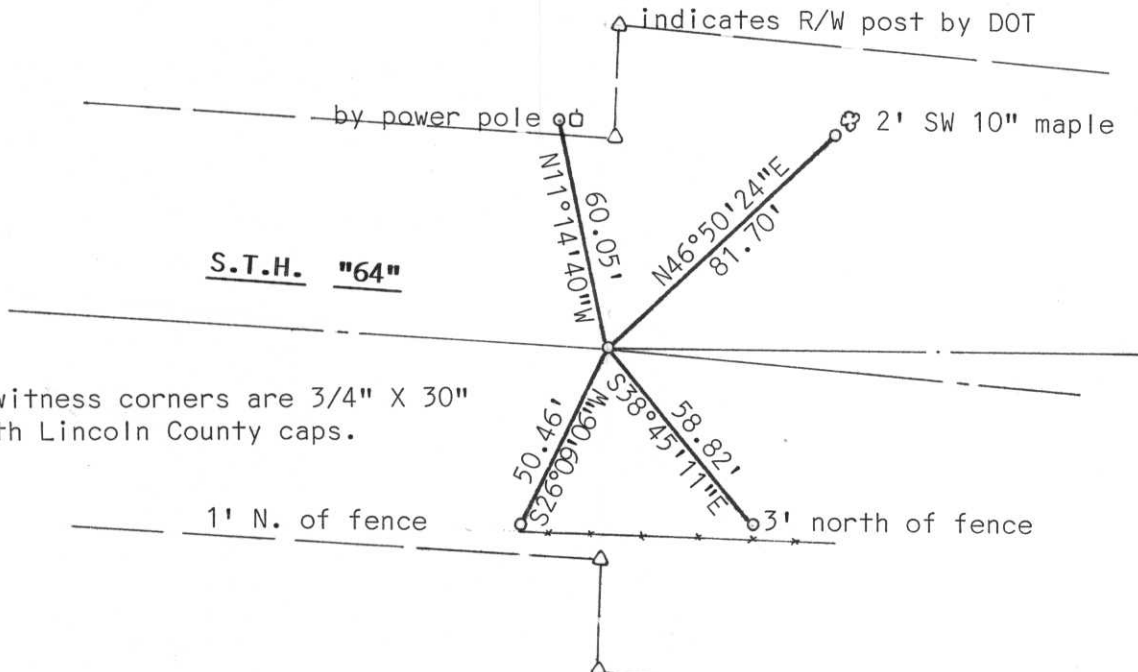
Section 30

(b) (f) (g) (h) Description of monument found at this corner and if it was accepted, state all evidence (material, testimonial, occupational, plats, records, other monuments) used as a basis for accepting. If not accepted or if nothing was found, state evidence used as basis for establishing location. If reestablished through lost corner proportionate methods, indicate all monuments, distances and directions used to establish.

Used State Highway plan Project T020(5) S.T.H. 64 Medford to Merrill. Set corner on Highway centerline and at stationing. Used highway right of way posts also. Did not set monument in highway. Included corner in our traverse. Distances fit well with highway stationing.

RECEIVED AT LINCOLN COUNTY
COURTHOUSE THIS 22nd DAY
OF Dec. 19 97
Pat Prube
TAX DESCRIPTION OFFICE

(c) (d) (e) Plan view of corner with ties to at least 4 witness monuments. If in disagreement with previously established corner, show the distances between the two corners and also indicate the ties to the disputed corner.



Note: All witness corners are 3/4" X 30" re-bars with Lincoln County caps.

(i) I, Edwin R. Abendroth RLS NO. S-798
(type or print name) certify that the corner location on this record was determined by me or under my direction and control and that this U.S. Public Land Survey Monument Record is correct and complete to the best of my knowledge and belief.

Edwin Abendroth December 19, 1997
Signature Date



Index No. Q-1



31 12:27 PM



31 12:27 PM



31 12:26 PM