

U.S. PUBLIC LAND SURVEY MONUMENT RECORD

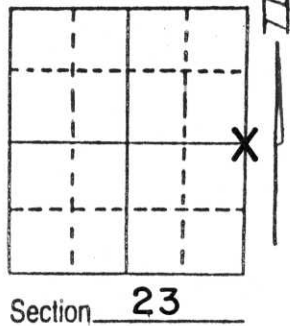
Note: This form is intended and designed to fulfill all requirements of Wisconsin Administrative Code, Chapter A-E 5.02, U.S. Public Land Survey Monument Record (3) (a) (b) (c) (d) (e) (f) (g) (h) (i). An additional sheet may be added if necessary to conform with said requirements.

(a) Corner location: Township 31 North

Range 4 East

Town/City/Village CORNING

County LINCOLN

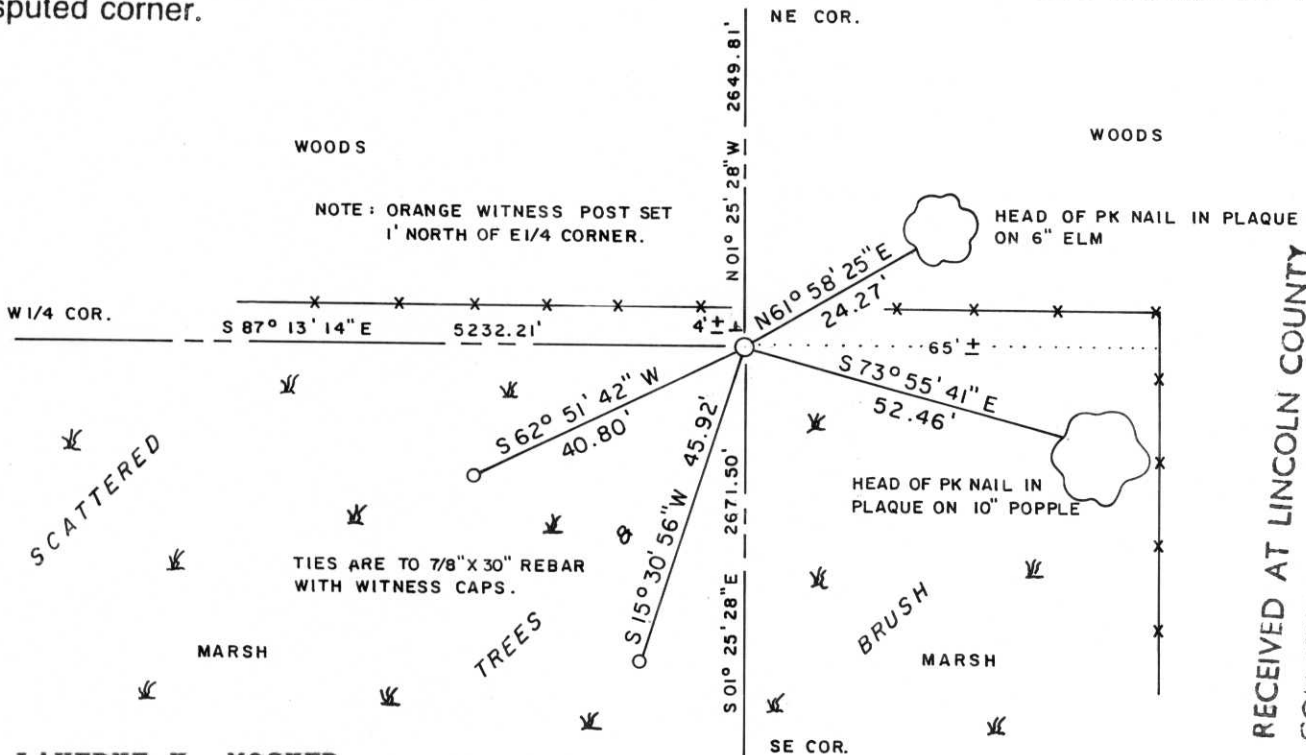


(b) (f) (g) (h) Description of monument found at this corner and if it was accepted, state all evidence (material, testimonial, occupational, plats, records, other monuments) used as a basis for accepting. If not accepted or if nothing was found, state evidence used as basis for establishing location. If reestablished through lost corner proportionate methods, indicate all monuments, distances and directions used to establish.

Original Corner - Wood Post set by W. E. Daugherty, 1851?. No remonumentation notes are available.

Searched corner area extensively and found no evidence of corner. Testimony from two longtime local residents, (Mr. Fred Schepp and Mr. Ralph Kluckman) was taken and they indicated they had never seen any corner monument in this area and that a North-South fence line could not be relied on as indicative of Section line location. A traverse of all of Sections 23, 25 and 26 and part of Section 24 was run. Corner point established by proportionate measurement between Southeast and Northeast section corners. A Standard Lincoln County Berntsen Monument was placed at corner. A section summary sheet of Section 23 has been placed on file with the County Surveyor's Office.

(c) (d) (e) Plan view of corner with ties to at least 4 witness monuments. If in disagreement with previously established corner, show the distances between the two corners and also indicate the ties to the disputed corner.



RECEIVED AT LINCOLN COUNTY
 COURTHOUSE THIS 25 DAY
 OF May 1995
Bob Brindley
 TAX RECEPTION OFFICE

(i) I, LAVERNE H. MOSHER

(type or print name) certify that the corner location on this record was determined by me or under my direction and control and that this U.S. Public Land Survey Monument Record is correct and complete to the best of my knowledge and belief.

Laverne H. Mosher

MAY 24, 1995

Signature

Date



Index No. 0-21



MARKER PENALTY
LINC
GOUNTY DISTURBING
FOR COLN
MARKER



