

LINCOLN COUNTY U.S. PUBLIC LAND TIE SHEET RECORD

SECTION 21
TOWNSHIP 31N
RANGE 4E

213144
NO.

LANDMARK

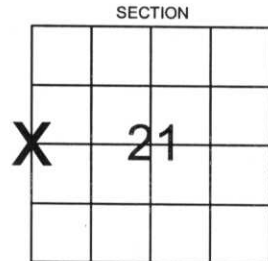
CORNING
CITY, VILLAGE, TOWN

CORNER INDENTITY: 3/4" IRON ROD

LINCOLN COUNTY COORDINATE: N: 114343.3085

E: 311736.0905

FOUND
SET
RE-SET
RE-TIED



DATE OF SURVEY: November 1, 2006
SURVEY PARTY: Rutzen

Description of monument found at this corner and if was accepted, state all evidence (material, testimonial, occupational, plats, records, other monuments) used as a basis for accepting. If not accepted or if nothing was found, state evidence used as basis for establishing location. If reestablished through lost corner proportionate methods, indicate all monuments, distances and directions used to establish.

BASIS FOR MONUMENT LOCATION:

(DESCRIBE METHOD OF SURVEY AND CORNER AUTHENTICATION)

Corner was set by single proportionate measurement.
The location was at the intersection of two blue lines.



CERTIFIED CORRECT:

Ronald K. Jacobson

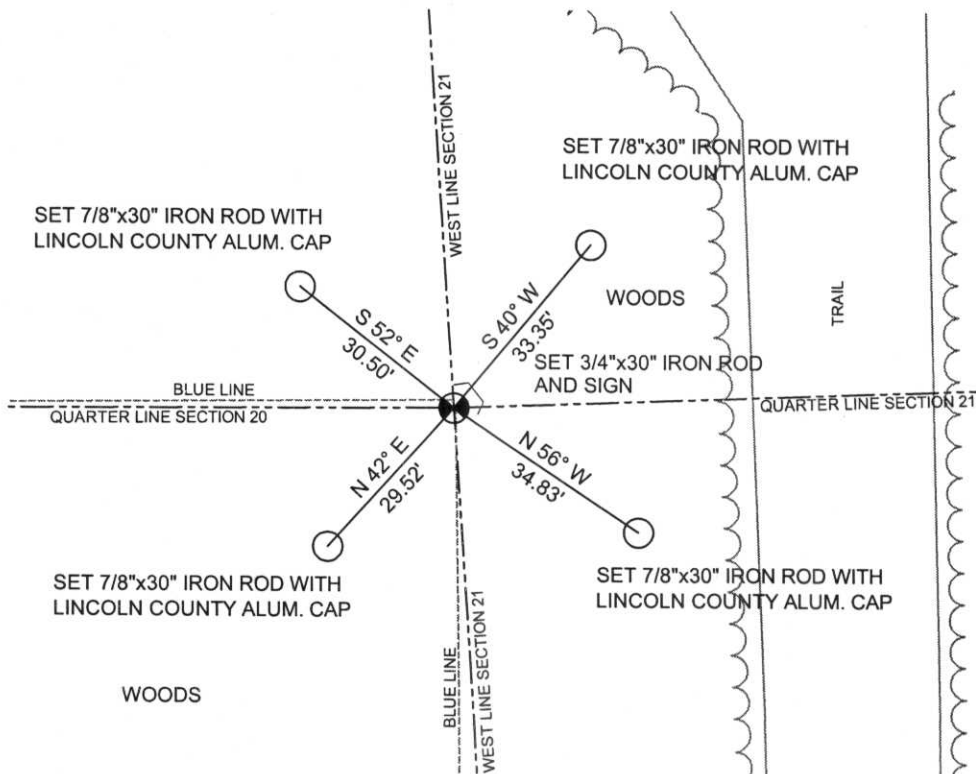
Ronald Jacobson RLS 2059-008
Registered Land Surveyor

DATE: November 30, 2006

COMPANY: Central Wisconsin Engineers & Architects
5707 Schofield Ave.
Weston, Wisconsin 54476
(715) 359-9400

TIE SKETCH:

SHOW MINIMUM OF FOUR (4) HORIZONTAL TIE DISTANCES TO FIXED WITNESS MONUMENTS.
DESCRIBE ALL MONUMENTS FOUND OR SET. ALL DISTANCES SHOWN IN US SURVEY FEET.



RECEIVED BY LINCOLN COUNTY
SURVEYOR THIS 13TH DAY
OF December 20 06
Tony Dath
COUNTY SURVEYOR

COORDINATES ARE REFERENCED TO LINCOLN COUNTY COORDINATE SYSTEM AS DEVELOPED BY THE WI. DEPARTMENT OF TRANSPORTATION AND ARE BASED ON GPS OBSERVATIONS TO CONTROL POINTS AS SUPPLIED BY LINCOLN COUNTY.



NOT TO SCALE
BEARINGS REFERENCED TO MAGNETIC NORTH









