

TAYLOR COUNTY U.S. PUBLIC LAND SURVEY MONUMENT RECORD

Sec 19-31-4
WV

Original Corner Information

Original corner monument: post
Set by: William E. Daugherty
Year: 1861

Bearing Trees

Species:	hemlock	hemlock
Diameter:	6"	20"
Bearings:	S 76° W	N 67° E
Distance:	6 links	5 links

**RECEIVED AT LINCOLN COUNTY
COURTHOUSE THIS 10th DAY
OF Feb. ~~10~~ 2000
Amy Dallman
LAND INFORMATION OFFICE**

Original Evidence Found – Subsequent Corner Restorations

(Include year of search, name of surveyor, evidence found and monument set.)
No subsequent surveys of record!

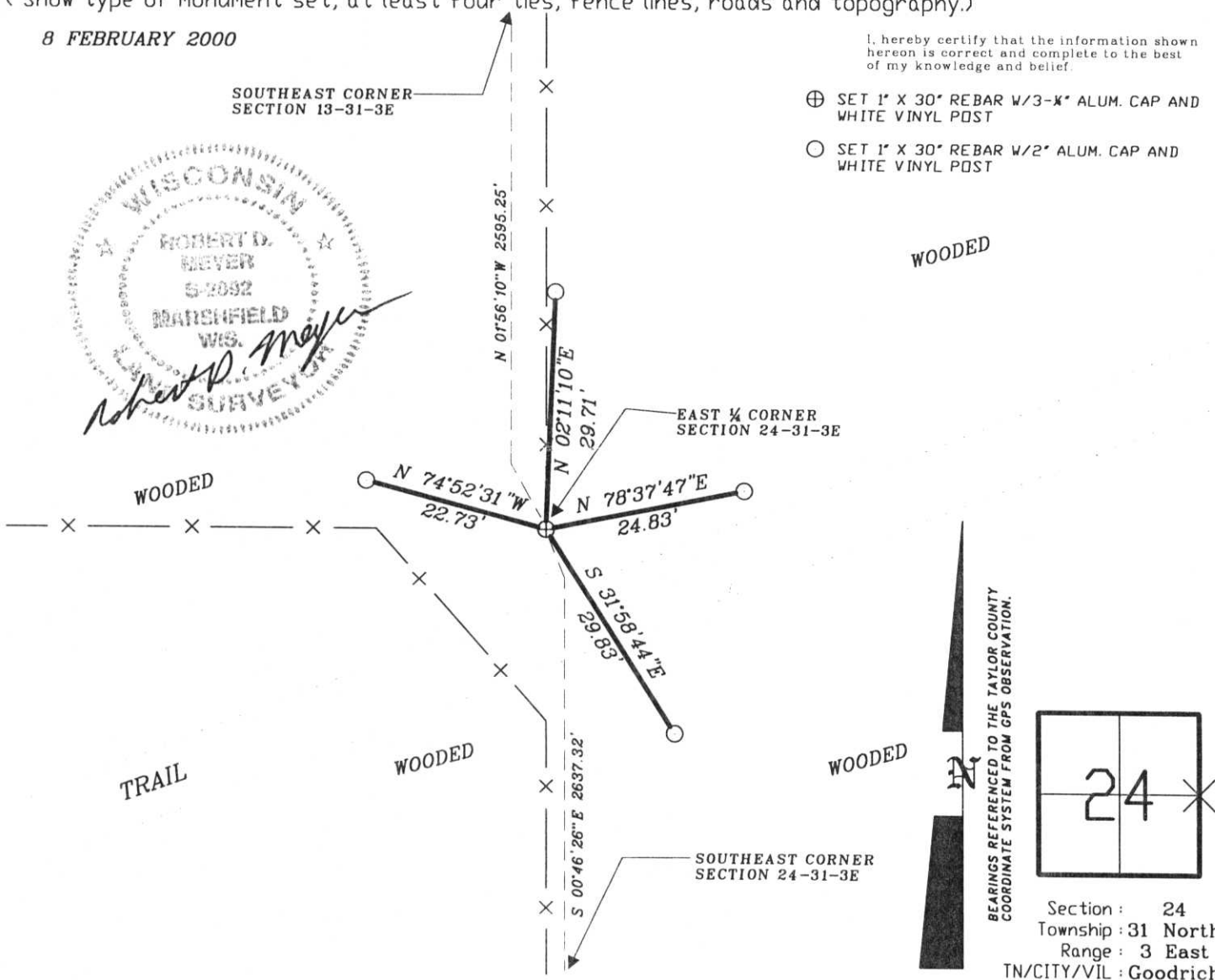
Basis For Monument Location

After no evidence of the original corner nor any perpetuation thereof could be found this corner was set at the intersection of fences to North, South and West. I believe said fence intersection is the best available evidence of this corners location.

Tie Sketch

(Show type of monument set, at least four ties, fence lines, roads and topography.)

8 FEBRUARY 2000



1-0