

LINCOLN COUNTY U.S. PUBLIC LAND TIE SHEET RECORD

SECTION 16
TOWNSHIP 31N
RANGE 4 E

163147
NO.

LANDMARK

CORNING
CITY, VILLAGE, TOWN

CORNER INDENTITY: BERNSTEN MONUMENT

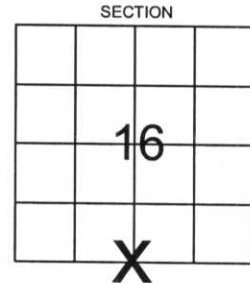
LINCOLN COUNTY COORDINATE: N: 117157.2020

E: 314269.2220

DATE OF SURVEY: October 19, 2006

SURVEY PARTY: Rutzen/Rehfeldt/Dahlvig

FOUND
SET
RE-SET
RE-TIED



Description of monument found at this corner and if was accepted, state all evidence (material, testimonial, occupational, plats, records, other monuments) used as a basis for accepting. If not accepted or if nothing was found, state evidence used as basis for establishing location. If reestablished through lost corner proportionate methods, indicate all monuments, distances and directions used to establish.

BASIS FOR MONUMENT LOCATION:

(DESCRIBE METHOD OF SURVEY AND CORNER AUTHENTICATION)

Monument was set based on parcel line evidence, and roadway evidence found in the field.



CERTIFIED CORRECT:

Ronald K. Jacobson
Ronald Jacobson RLS 2059-008
Registered Land Surveyor

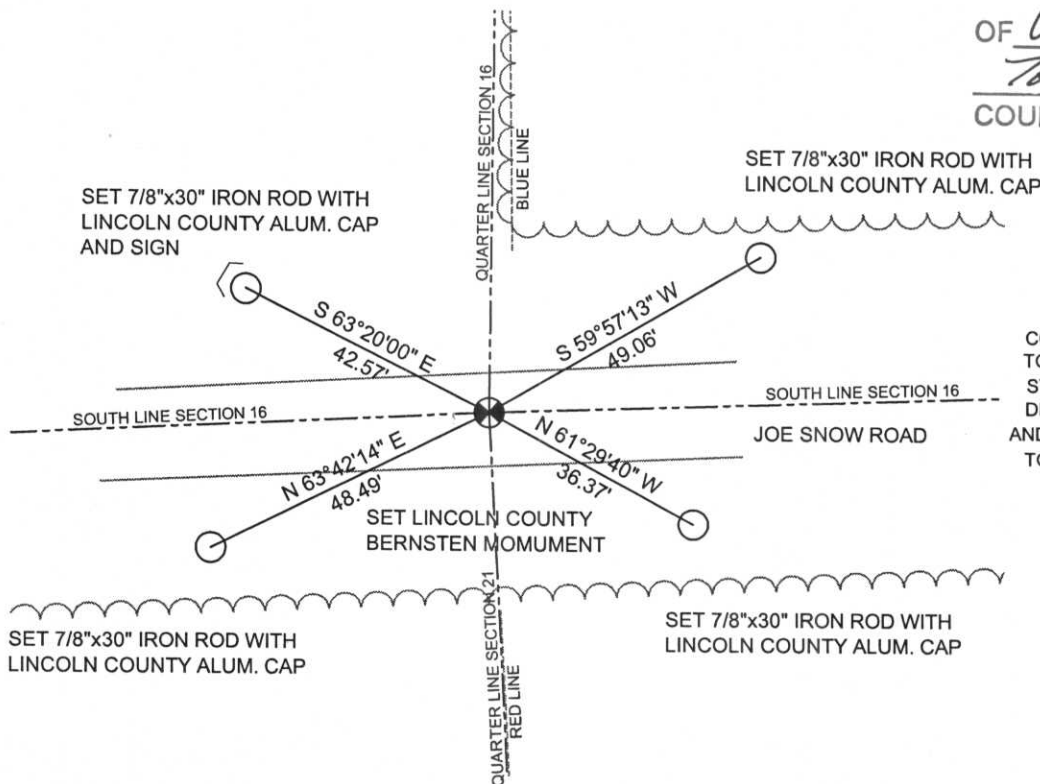
DATE: October 24, 2006

COMPANY: Central Wisconsin Engineers & Architects
5707 Schofield Ave.
Weston, Wisconsin 54476
(715) 359-9400

TIE SKETCH:

SHOW MINIMUM OF FOUR (4) HORIZONTAL TIE DISTANCES TO FIXED WITNESS MONUMENTS.
DESCRIBE ALL MONUMENTS FOUND OR SET. ALL DISTANCES SHOWN IN US SURVEY FEET.

RECEIVED BY LINCOLN COUNTY
SURVEYOR THIS 31ST DAY
OF October 20 06
Tommy Dahl
COUNTY SURVEYOR



COORDINATES ARE REFERENCED TO LINCOLN COUNTY COORDINATE SYSTEM AS DEVELOPED BY THE WI. DEPARTMENT OF TRANSPORTATION AND ARE BASED ON GPS OBSERVATIONS TO CONTROL POINTS AS SUPPLIED BY LINCOLN COUNTY.

NOT TO SCALE
BEARINGS REFERENCED TO LINCOLN COUNTY COORDINATE SYSTEM









