

# LINCOLN COUNTY U.S. PUBLIC LAND TIE SHEET RECORD

SECTION 18  
TOWNSHIP 31N  
RANGE 5E

183154  
NO.

LANDMARK

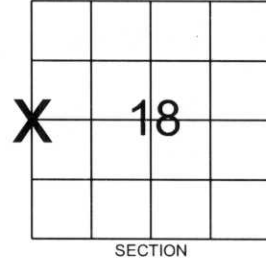
**CORNING**  
CITY, VILLAGE, TOWN

CORNER IDENTIFY: 7" X 7" GRANITE MONUMENT

LINCOLN COUNTY COORDINATE: N: 118946.8910  
E: 332827.6690

DATE OF SURVEY: July 13, 2006  
SURVEY PARTY: Rutzen/Jacobson

FOUND   
SET   
RE-SET   
RE-TIED



Description of monument found at this corner and if was accepted, state all evidence (material, testimonial, occupational, plats, records, other monuments) used as a basis for accepting. If not accepted or if nothing was found, state evidence used as basis for establishing location. If reestablished through lost corner proportionate methods, indicate all monuments, distances and directions used to establish.

## BASIS FOR MONUMENT LOCATION:

(DESCRIBE METHOD OF SURVEY AND CONER AUTHENTICATION)

Found 7" X 7" granite monument.



CERTIFIED CORRECT:

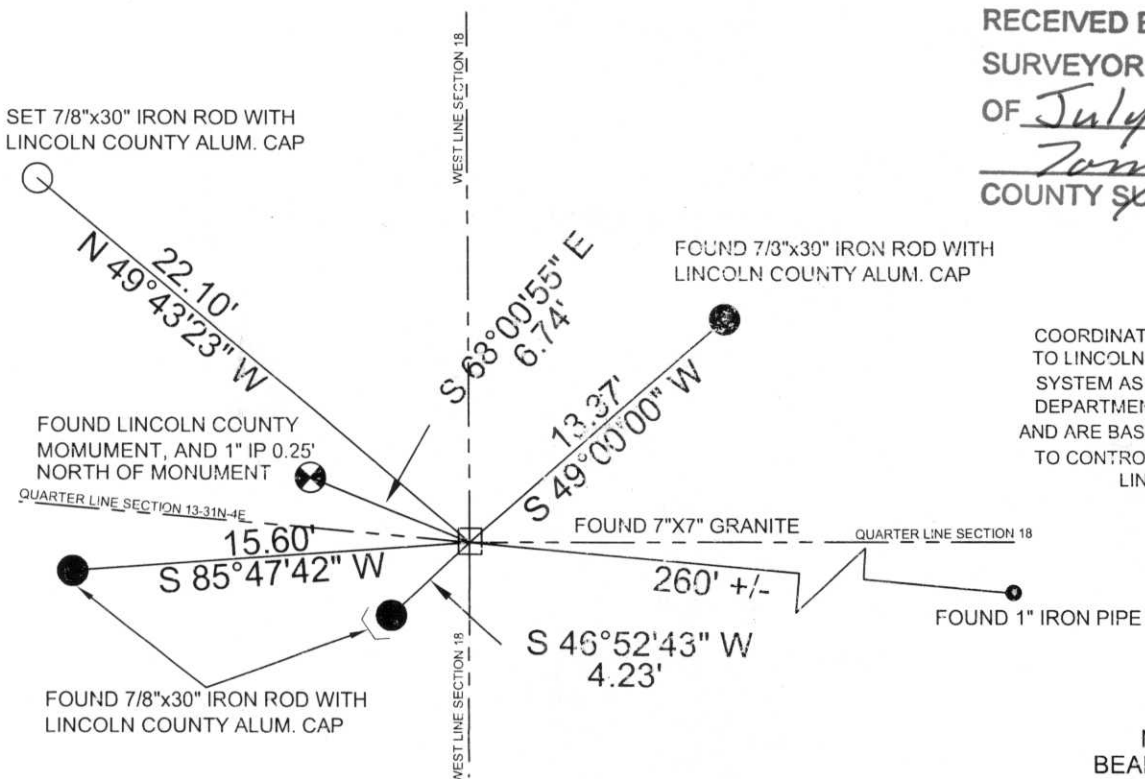
*Ronald Jacobson*  
Ronald Jacobson RLS 2059-008  
Registered Land Surveyor

DATE: July 21, 2006

COMPANY: Central Wisconsin Engineers & Architects  
5707 Schofield Ave.  
Weston, Wisconsin 54476  
(715) 359-3400

## TIE SKETCH:

SHOW MINIMUM OF FOUR (4) HORIZONTAL TIE DISTANCES TO FIXED WITNESS MONUMENTS.  
DESCRIBE ALL MONUMENTS FOUND OR SET. ALL DISTANCES SHOWN IN US SURVEY FEET.



RECEIVED BY LINCOLN COUNTY  
SURVEYOR THIS 21<sup>ST</sup> DAY  
OF July 20 06  
*Tommy Walk*  
COUNTY SURVEYOR

COORDINATES ARE REFERENCED TO LINCOLN COUNTY COORDINATE SYSTEM AS DEVELOPED BY THE WI. DEPARTMENT OF TRANSPORTATION AND ARE BASED ON GPS OBSERVATIONS TO CONTROL POINTS AS SUPPLIED BY LINCOLN COUNTY.

NOT TO SCALE  
BEARINGS REFERENCED TO LINCOLN COUNTY COORDINATE SYSTEM

T-2

# Attachment to Tie Sheet K-1, T31N, R5E & Tie Sheet K-25, T31N, R4E

I visited the corner on 10/30/2015 to verify the corner and reference tie monumentation and location as shown on the two conflicting tie sheets of record; R. Jacobson (07/21/2006) & W. Nutter (04/19/2004). I found and I am in agreement with the information shown on the tie sheet by Jacobson with the noted change below.

## NOTE

- I found that the 7" x 7" Granite Stone Monument was badly heaved and leaning due to frost action in the swampy area. I successfully removed the Stone and verified that the center of the remaining hole was in general agreement with the tie distance shown on Jacobson's 2006 tie sheet. I replaced the Stone with a **Berntsen 50" long Aluminum Swamp Rod** at the intersection of said tie distances. The Stone remains lying flat next to the Swamp Rod.



Anthony R. Dallman, PLS-2405

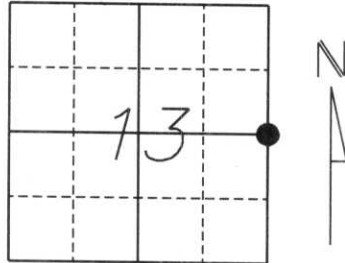
Lincoln County Surveyor



# U.S. PUBLIC LAND SURVEY MONUMENT RECORD

Note: This form is intended and designed to fulfill all requirements of Wisconsin Administrative Code, Chapter A-E 5.02, U.S. Public Land Survey Monument Record (3) (a) (b) (c) (d) (e) (f) (g) (h) (i). An additional sheet may be added if necessary to conform with said requirements.

(a) Corner location: Township 31 North  
 Range 4 East  
 Town/City/Village Corning  
 County Lincoln



Section 13

(b) (f) (g) (h) Description of monument found at this corner and if it was accepted, state all evidence (material, testimonial, occupational, plats, records, other monuments) used as a basis for accepting. If not accepted or if nothing was found, state evidence used as a basis for establishing location. If reestablished through lost corner proportionate methods, indicate all monuments, distance and directions used to establish.

*History of original corner establishment:*

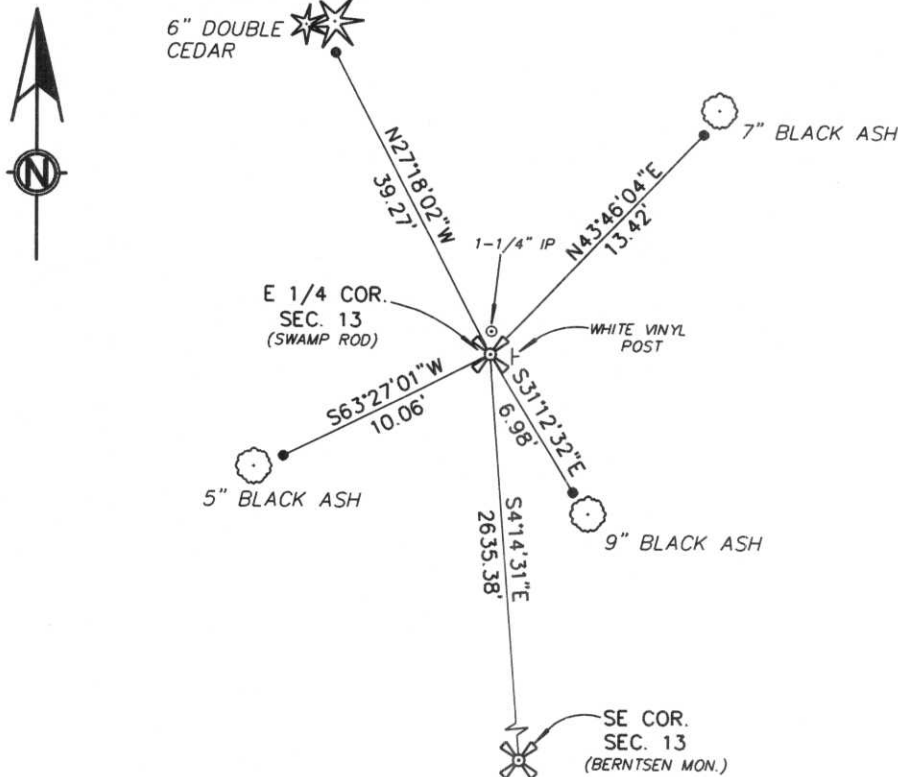
*Original Survey was July, 1851 by James M. Marsh. Original corner was a wooden post with bearing trees:*

- 12" Cedar S22°W, 18 lks.*
- 10" Black Ash N75°W, 28 lks.*
- 11" Birch N32°W, 20 lks.*

*Description of corner evidence found:*

*We located a 1-1/4" Iron Pipe set by W. H. Stuth, Febuary 25, 1987 from a survey done in 1966 for Owens Illinois, Tomahawk Wisconsin Forest Products Division. We accepted this position as best available evidence and replaced Iron Pipe with a Swamp Rod and reset Iron Pipe on North side of Swamp Rod and tied to 7/8" rebar with Lincoln County Caps.*

(c) (d) (e) Plan view of corner with ties to at least 4 witness monuments. If in disagreement with previously established corner, show the distances between the two corners and also indicate the ties to the disputed corner.



NOTE: Drawing is not to scale.

R Recorded as

- All ties are to 7/8" Rebar with Lincoln County Caps approximately 2 feet from bearing trees.



(i) I, William W. Nutter RLS, S-2299  
 (type or print name) certify that the corner location on this record was determined by me or under my direction and control and that this U.S. Public Land Survey Monument Record is correct and complete to the best of my knowledge and belief.

William W. Nutter  
 Signature  
 (revised 2/97)

4-19-2004  
 Date

Index No.

K-25





100 PENALTY FOR DISTURBING  
LINCOLN COUNTY  
WATER











