

# LINCOLN COUNTY U.S. PUBLIC LAND TIE SHEET RECORD

SECTION 11  
TOWNSHIP 31N  
RANGE 4 E

113147  
NO.

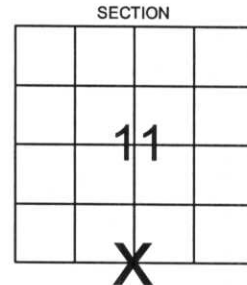
LANDMARK

CORNING  
CITY, VILLAGE, TOWN

CORNER INDENTITY: BERNSTEN MONUMENT

LINCOLN COUNTY COORDINATE: N: 122261.4060  
E: 324548.1430

FOUND   
SET   
RE-SET   
RE-TIED



DATE OF SURVEY: October 3, 2006  
SURVEY PARTY: Rutzen/Rehfeldt/Dahlvig

Description of monument found at this corner and if was accepted, state all evidence (material, testimonial, occupational, plats, records, other monuments) used as a basis for accepting. If not accepted or if nothing was found, state evidence used as basis for establishing location. If reestablished through lost corner proportionate methods, indicate all monuments, distances and directions used to establish.

## BASIS FOR MONUMENT LOCATION:

(DESCRIBE METHOD OF SURVEY AND CORNER AUTHENTICATION)

No evidence found of original corner. Monument was set based on single proportionate measurement.



CERTIFIED CORRECT:

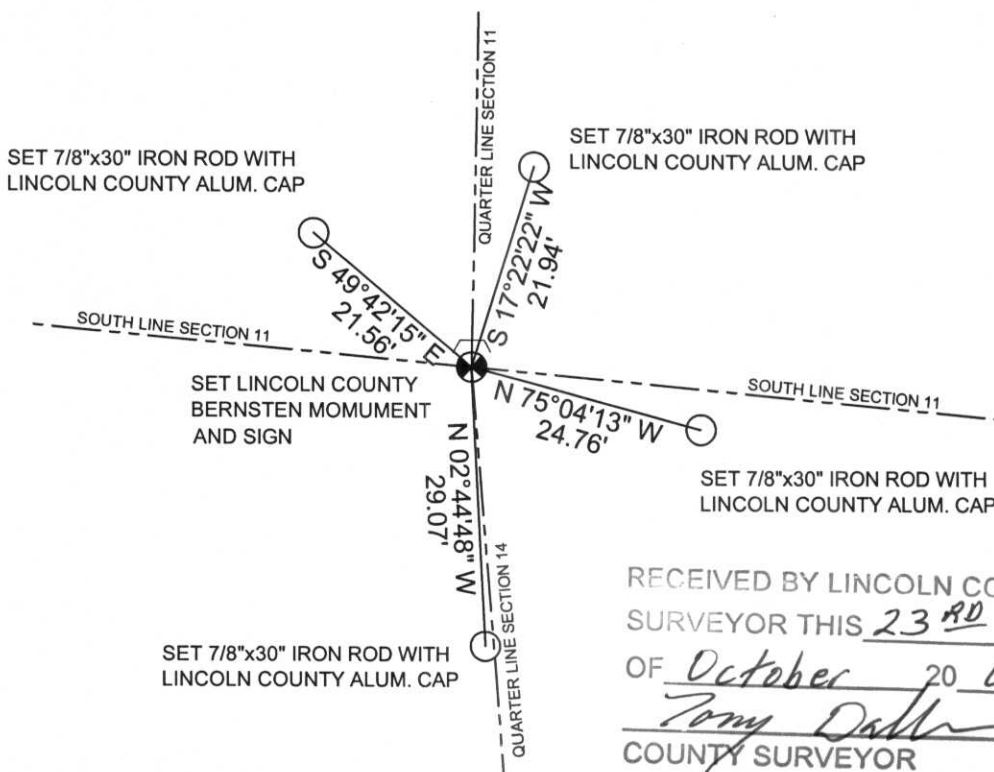
*Ronald K. Jacobson*  
Ronald Jacobson RLS 2059-008  
Registered Land Surveyor

COMPANY: Central Wisconsin Engineers & Architects  
5707 Schofield Ave.  
Weston, Wisconsin 54476  
(715) 359-9400

DATE: October 19, 2006

## TIE SKETCH:

SHOW MINIMUM OF FOUR (4) HORIZONTAL TIE DISTANCES TO FIXED WITNESS MONUMENTS. DESCRIBE ALL MONUMENTS FOUND OR SET. ALL DISTANCES SHOWN IN US SURVEY FEET.



COORDINATES ARE REFERENCED TO LINCOLN COUNTY COORDINATE SYSTEM AS DEVELOPED BY THE WI. DEPARTMENT OF TRANSPORTATION AND ARE BASED ON GPS OBSERVATIONS TO CONTROL POINTS AS SUPPLIED BY LINCOLN COUNTY.

RECEIVED BY LINCOLN COUNTY SURVEYOR THIS 23<sup>RD</sup> DAY OF October 20 06  
*Tony Dahl*  
COUNTY SURVEYOR

NOT TO SCALE  
BEARINGS REFERENCED TO LINCOLN COUNTY COORDINATE SYSTEM



COUNTY SURVEY  
LINGOIN FOR BIA



PLEASE  
DO NOT  
DISTURB  
NEARBY

S M  
U R  
R V  
K E  
E Y R

IF THE  
LOCATION  
OF THE NEARBY  
MARKER IS  
ENHANCED  
PLEASE CONTACT  
THE COUNTY  
SURVEYING  
OFFICE





