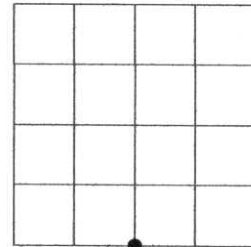


U.S. PUBLIC LAND SURVEY MONUMENT RECORD

Note: This form is intended and designed to fulfill all requirements of the Wisconsin Administrative Code, Chapter A-E 7.08 U.S. Public Land Monument Record (3)(a)(b)(c)(d)(e)(f)(g)(h)(i). An additional sheet may be added if necessary to conform with said requirements.

(a) CORNER LOCATION:	COORDINATES
south quarter corner of Section 9	North:
Township 31 North	East:
Range 4 East	Control Station:
Town of Corning	Latitude:
County of Lincoln	Longitude:
	Datum Method



SECTION 9

(b) HISTORY OF ORIGINAL CORNER ESTABLISHMENT

Original Surveyor: W.E. Daugherty	Original B.T.'S
Date of Survey: Commenced December 1861	Cedar 10" dia., N21°E 13 links
Completed January 1862	Cedar 8" dia., S61°W 45 links

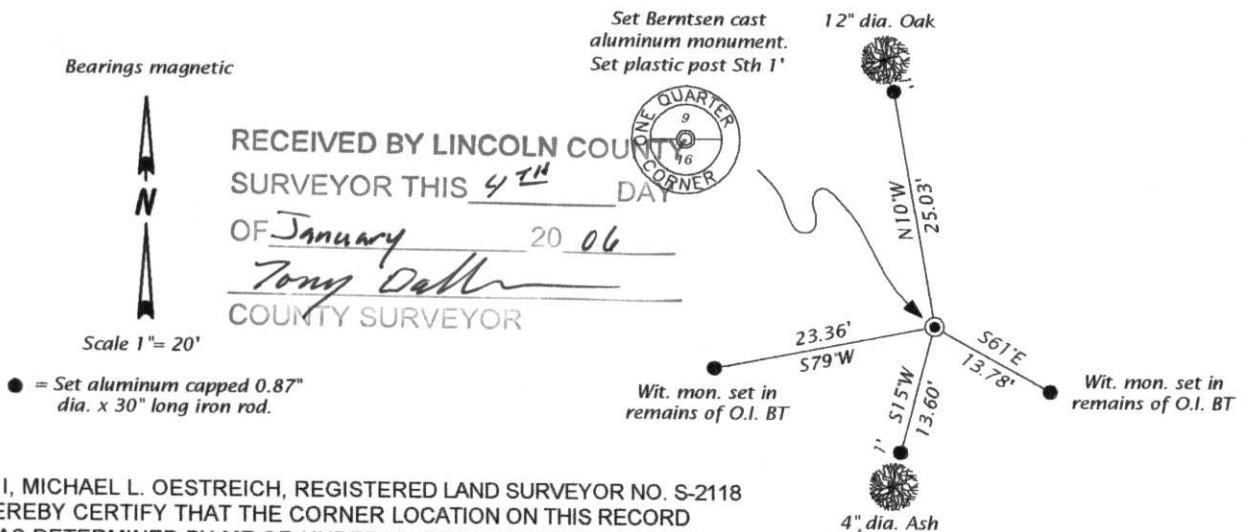
(f)(g)(h) DESCRIPTION OF MONUMENT FOUND AT THIS CORNER AND IF IT WAS ACCEPTED, STATE ALL EVIDENCE (MATERIAL, TESTIMONIAL, OCCUPATIONS, PLATS, RECORDS, OTHER MONUMENTS) USED AS A BASIS FOR ESTABLISHING LOCATION. IF NOT ACCEPTED OF IF NOTHING WAS FOUND, STATE EVIDENCE USED AS BASIS FOR ESTABLISHING LOCATION. IF REESTABLISHED THROUGH LOST CORNER PROPORTIONATE METHODS, INDICATE ALL MONUMENTS, DISTANCES AND DIRECTIONS USED TO ESTABLISH. INDICATE TYPE OF MONUMENT AND SIGN POST FOUND OR SET.

Original Surveyor: W.E. Daugherty, at 40.11 chains set quarter post.

W. H. Stuth: 3/6/87, recovered an iron pipe and notes the following bearing trees: 14" Elm S65W 23.0' and a 12" Maple S62E 14.0'

Michael L. Oestreich: 12/8/05, replaced a recovered 1.0" dia. iron pipe with a Berntsen cast aluminum monument for the corner. The southeast bearing tree by Stuth is a stump with lower blaze still visible. The southwest bearing tree by Stuth is the rotted remains of a stump, I set witness monuments in both of these, and made other witness ties as shown in plan below. See map of Survey by Oestreich Surveying & Mapping, LLC dated 11/30/05 for more survey data relating to the subdivision of Section 9.

(c)(d)(e) PLAN VIEW OF CORNER WITH TIES TO AT LEAST 4 WITNESS MONUMENTS. IF IN DISAGREEMENT WITH PREVIOUSLY ESTABLISHED CORNER, SHOW THE DISTANCE BETWEEN THE TWO CORNERS AND ALSO INDICATE THE TIES TO THE DISPUTED CORNER.



(i) I, MICHAEL L. OESTREICH, REGISTERED LAND SURVEYOR NO. S-2118 HEREBY CERTIFY THAT THE CORNER LOCATION ON THIS RECORD WAS DETERMINED BY ME OR UNDER MY DIRECTION AND CONTROL AND THAT THIS U.S. PUBLIC LAND SURVEY MONUMENT RECORD IS CORRECT AND COMPLETE TO THE BEST OF MY KNOWLEDGE AND BELIEF.

Michael L. Oestreich
SIGNATURE 12/30/05
DATE



INDEX NO. I-11





