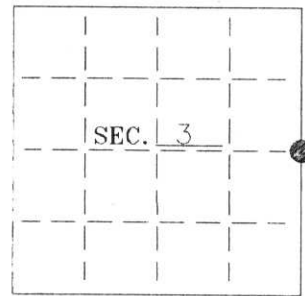


# U. S. PUBLIC LAND SURVEY MONUMENT RECORD

Note: This form is intended and designed to fulfill all requirements of Wisconsin Administrative Code—Chapter A-E 7.08 U. S. Public Land Survey Monument Record (3)(a)(b)(c)(d)(e)(f)(g)(h)(i). An additional sheet may be added if necessary to conform with said requirements.

(a) CORNER LOCATION: State Plane Coordinates  
E 1/4 corner of Sec. 3 X ---  
 Township 31 North Y ---  
 Range 4 East Datum Base ---  
 Town Corning County of Lincoln



(b) HISTORY OF ORIGINAL CORNER ESTABLISHMENT:

Original Surveyor: Wm Daugherty  
 Date of Survey: Commenced 1861  
 Completed 1861

Original B.T.'S

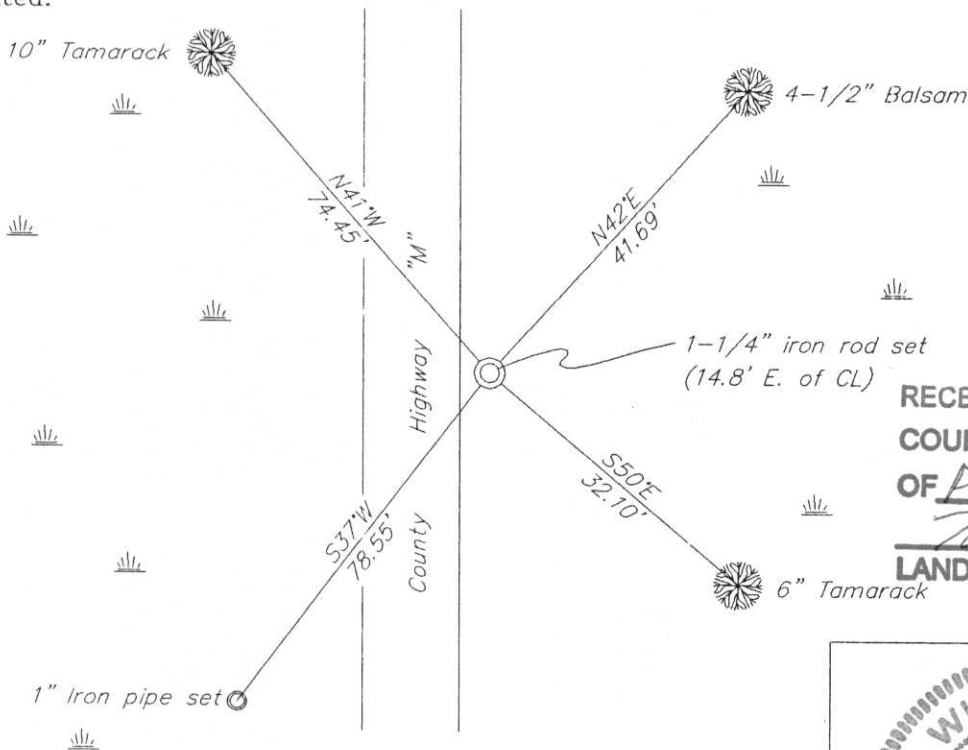
10" Tamarack N47°W, 30 lks  
 9" Tamarack S35°E, 21 lks

(b)(f)(g)(h) Description of monument found at this corner and if it was accepted—state all evidence (material—testimonial—occupation—plats—records—other monuments) used as a basis for accepting. If not accepted or if nothing was found state evidence used as basis for establishing location. If reestablished through lost corner proportionate methods indicate all monuments—distances and directions used to establish. Indicate type of monument and sign post found or set.

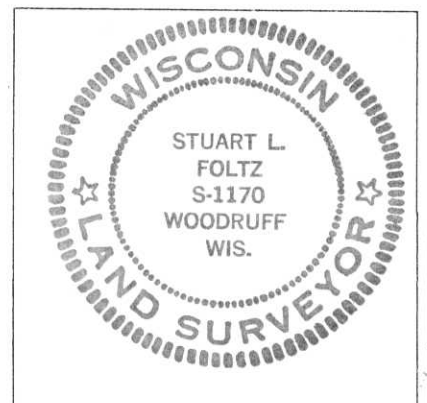
The original Government Land Office survey notes state the distance between the Southeast Section corner and the Northeast Section corner as 5220.6 feet (79.10 chains). In 1995 Gary R. Krueger, RLS measured the line to be 4598.74' between two pk nails found at the Section corner locations. I measured this distance at 4598.76 feet. During the same survey Krueger set an East 1/4 corner in the centerline of CTH "M" 2640.00 feet (40 chains) north of the Southeast Section corner of Section 3.

I did not accept Krueger's 1/4 corner location and set a 1-1/4" iron rod on a straight line at a proportioned distance between the Southeast and Northeast section corners. See sketch below for corner ties. See more complete corner history on survey map by Foltz and Associates, Inc., dated 1/30/2002, on file at the Lincoln County Surveyor's Office.

(c)(d)(e) Plan view of corner with ties to at least 4 witness monuments. If in disagreement with previously established corner—show the distances between the two corners and also indicate the ties to the disputed.



RECEIVED AT LINCOLN COUNTY  
 COURTHOUSE THIS 28<sup>TH</sup> DAY  
 OF February 20 02  
Tommy Walker  
 LAND INFORMATION OFFICE



INDEX NO. 6-17

(i) I Stuart L. Foltz S-1170  
 hereby certify that the corner location on this record was determined by me or under my direction and control and that this U.S. Public Land Survey Monument Record is correct and complete to the best of my knowledge and belief.

Stuart L. Foltz  
 Signature Foltz and Associates, Inc. Date 2/27/2002

# U.S. PUBLIC LAND SURVEY MONUMENT RECORD

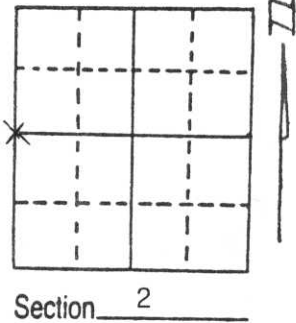
Note: This form is intended and designed to fulfill all requirements of Wisconsin Administrative Code, Chapter A-E 5.02, U.S. Public Land Survey Monument Record (3) (a) (b) (c) (d) (e) (f) (g) (h) (i). An additional sheet may be added if necessary to conform with said requirements.

(a) Corner location: Township 24<sup>31</sup> North

Range 34<sup>4</sup> East

Town/City/Village CORNING

County LINCOLN



Section 2

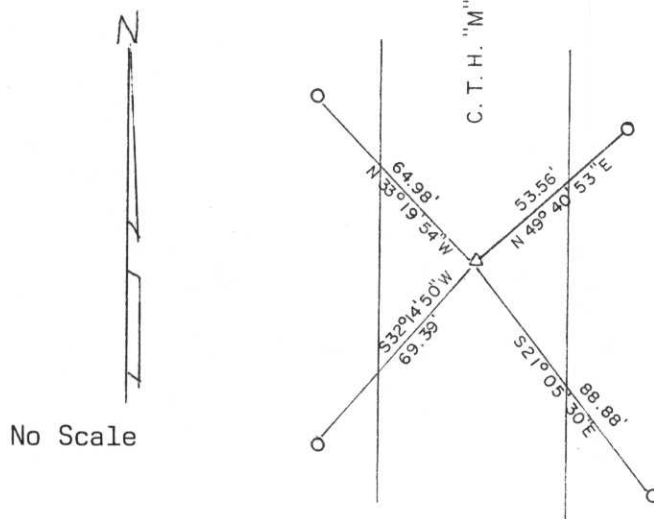
(b) (f) (g) (h) Description of monument found at this corner and if it was accepted, state all evidence (material, testimonial, occupational, plats, records, other monuments) used as a basis for accepting. If not accepted or if nothing was found, state evidence used as basis for establishing location. If reestablished through lost corner proportionate methods, indicate all monuments, distances and directions used to establish.

Corner was established after extensive survey throughout Sections 1 and 2 (T31N, R4E) and Sections 35 and 36 (T32N, R4E). Location corresponded with survey work done by Krebs (RLS 471) in 1981; except we held C.T.H. "M" centerline. This location was accepted as best location for corner and a Railroad Spike was set and tied out.

RECEIVED AT LINCOLN COUNTY  
COURTHOUSE THIS 27th  
of April 1995  
Pat Probe  
TAX DESCRIPTION OFF

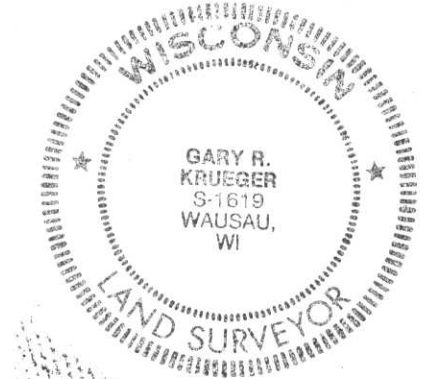
(c) (d) (e) Plan view of corner with ties to at least 4 witness monuments. If in disagreement with previously established corner, show the distances between the two corners and also indicate the ties to the disputed corner.

Ties completed 4-25-95



No Scale

All ties to 7/8" x 30" Rebars.  
With the tie in the SW  
Quadrant having a Do Not  
Disturb Marker alongside.  
To the SW Cor;  
S2°19'50"W, 2640.00'  
To the NW Cor;  
N2°59'32"E, 1958.74'  
To the Cen. of Sec.  
S82°24'07"E, 2724.88'



(i) I, Gary R. Krueger RLS NO.1619  
(type or print name) certify that the corner location on this record was determined by me or under my direction and control and that this U.S. Public Land Survey Monument Record is correct and complete to the best of my knowledge and belief.

Gary R. Krueger Signature 4-26-95 Date

Index No. C-17