





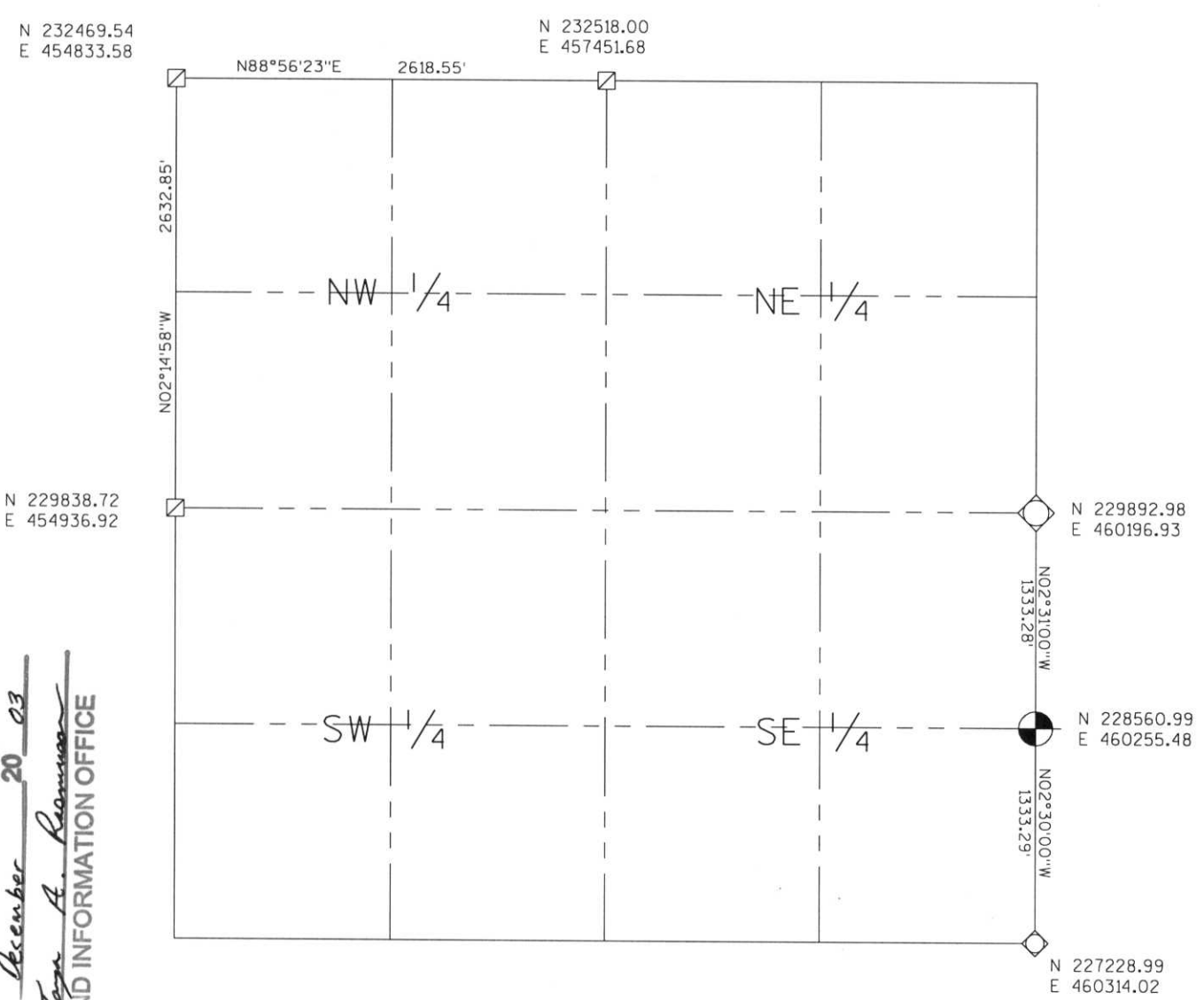


LINCOLN COUNTY SECTION SUMMARY

LEGEND

-  FOUND GRANITE MONUMENT
-  FOUND LINCOLN COUNTY MONUMENT
-  SET LINCOLN COUNTY MONUMENT
-  FOUND 2" DIA. IRON PIPE WITH BRASS CAP
-  FOUND 2 1/4" DIA. IRON PIPE WITH BRASS CAP
-  COORDINATES PER ONEIDA COUNTY

SECTION SUMMARY 36 SECTION — 35N TOWNSHIP — 8E RANGE
HARRISON
 TOWN



RECEIVED AT LINCOLN COUNTY
 COURTHOUSE THIS 29TH DAY
 OF December 20 03
Tara A. Roman
 LAND INFORMATION OFFICE

NOTES:
 COORDINATES AND BEARINGS ARE REFERENCED TO THE LINCOLN COUNTY COORDINATE SYSTEM AS DEVELOPED BY THE WISCONSIN DEPARTMENT OF TRANSPORTATION AND WERE DETERMINED BY GPS OBSERVATIONS ON CONTROL POINTS AS SUPPLIED BY THE DOT.



CERTIFIED CORRECT:
Jeffrey L. Demuth
 Signature 12/22/03
 Date

0-21, 0-23, 0-21, 0-25, X-25, Y-25
 Index No. 018-21, 25