

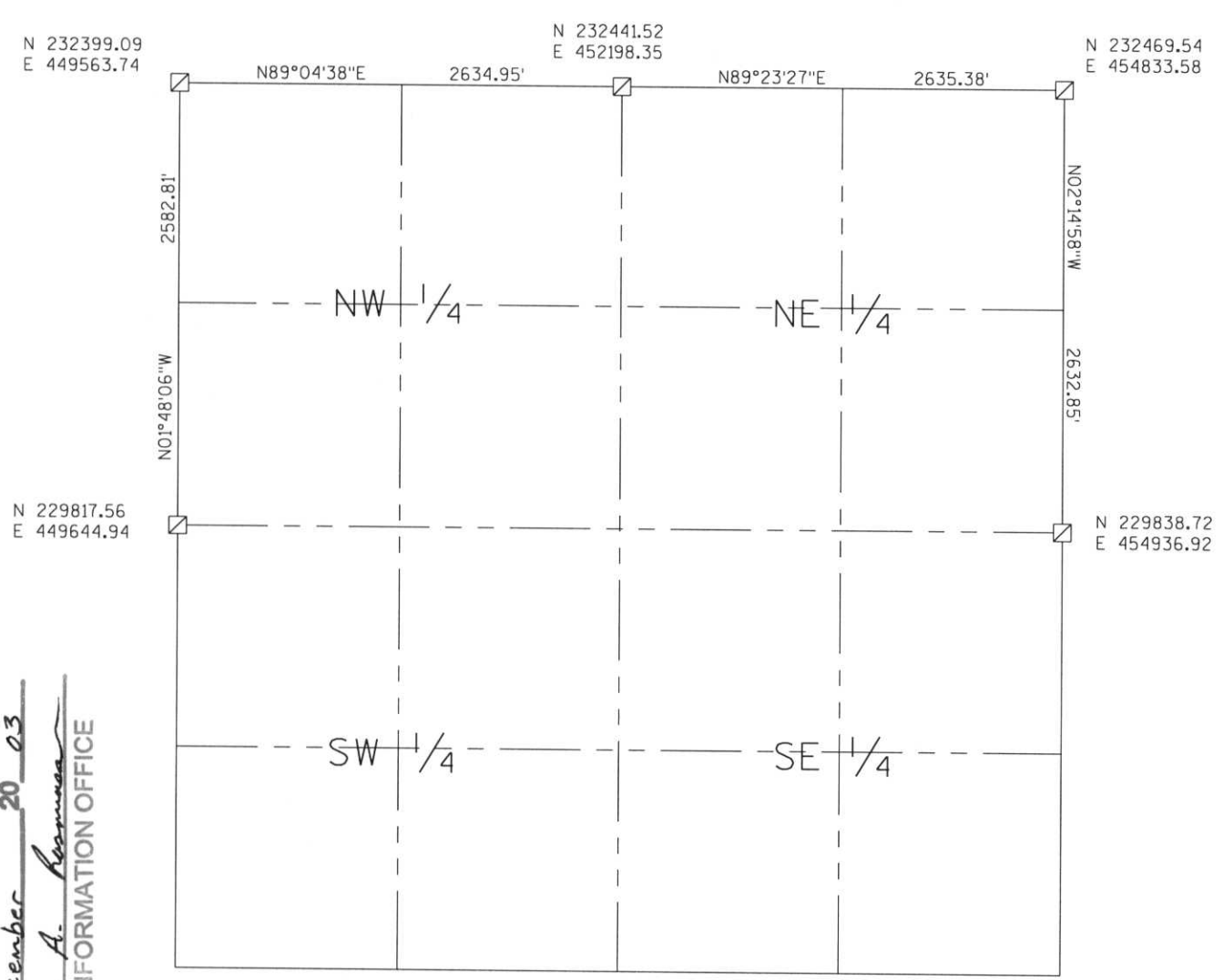


LINCOLN COUNTY SECTION SUMMARY

LEGEND

- FOUND GRANITE MONUMENT
-  FOUND LINCOLN COUNTY MONUMENT
-  SET LINCOLN COUNTY MONUMENT

SECTION SUMMARY 35 SECTION — 35N TOWNSHIP — 8E RANGE
HARRISON
 TOWN



RECEIVED AT LINCOLN COUNTY
 COURTHOUSE THIS 29TH DAY
 OF December 20 03
Tanya A. Rosman
 LAND INFORMATION OFFICE



NOTES:
 COORDINATES AND BEARINGS ARE REFERENCED TO THE LINCOLN COUNTY COORDINATE SYSTEM AS DEVELOPED BY THE WISCONSIN DEPARTMENT OF TRANSPORTATION AND WERE DETERMINED BY GPS OBSERVATIONS ON CONTROL POINTS AS SUPPLIED BY THE DOT.

CERTIFIED CORRECT:

Signature: *Jeffrey L. Demuth* Date: 12/22/03

0-17, 0-19, 0-21, 0-17, 0-21
 Index No. 04-1721